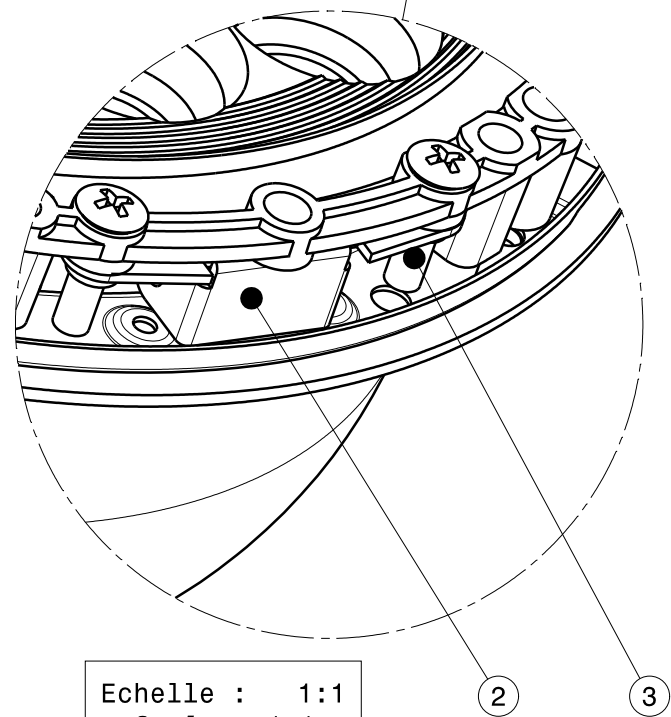
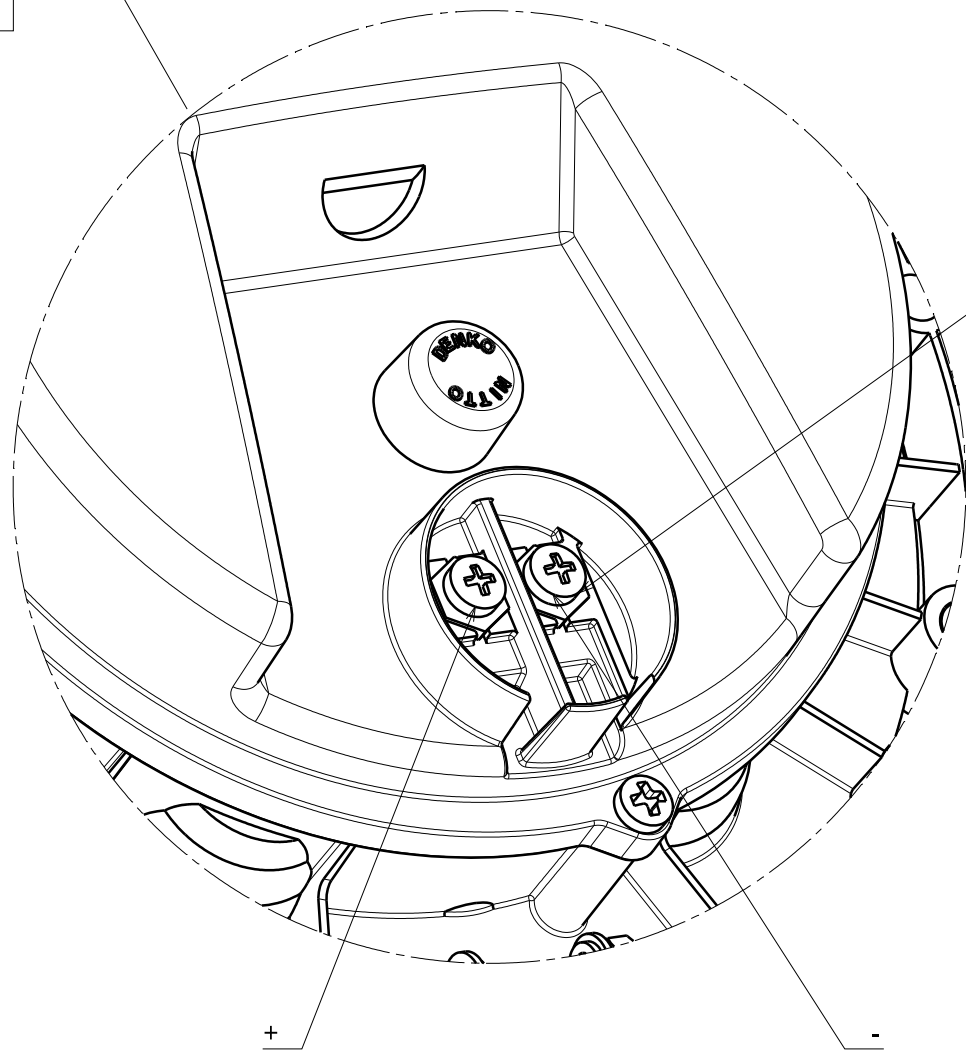


Coupe A-A
Echelle : 1:2
Scale : 1:2

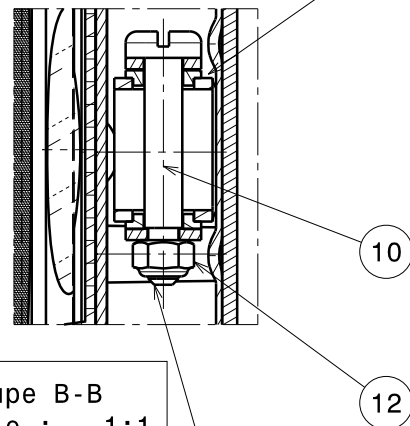


Echelle : 1:1
Scale : 1:1



Echelle : 1:1
Scale : 1:2

Coupe B-B
Echelle : 1:1
Scale : 1:1

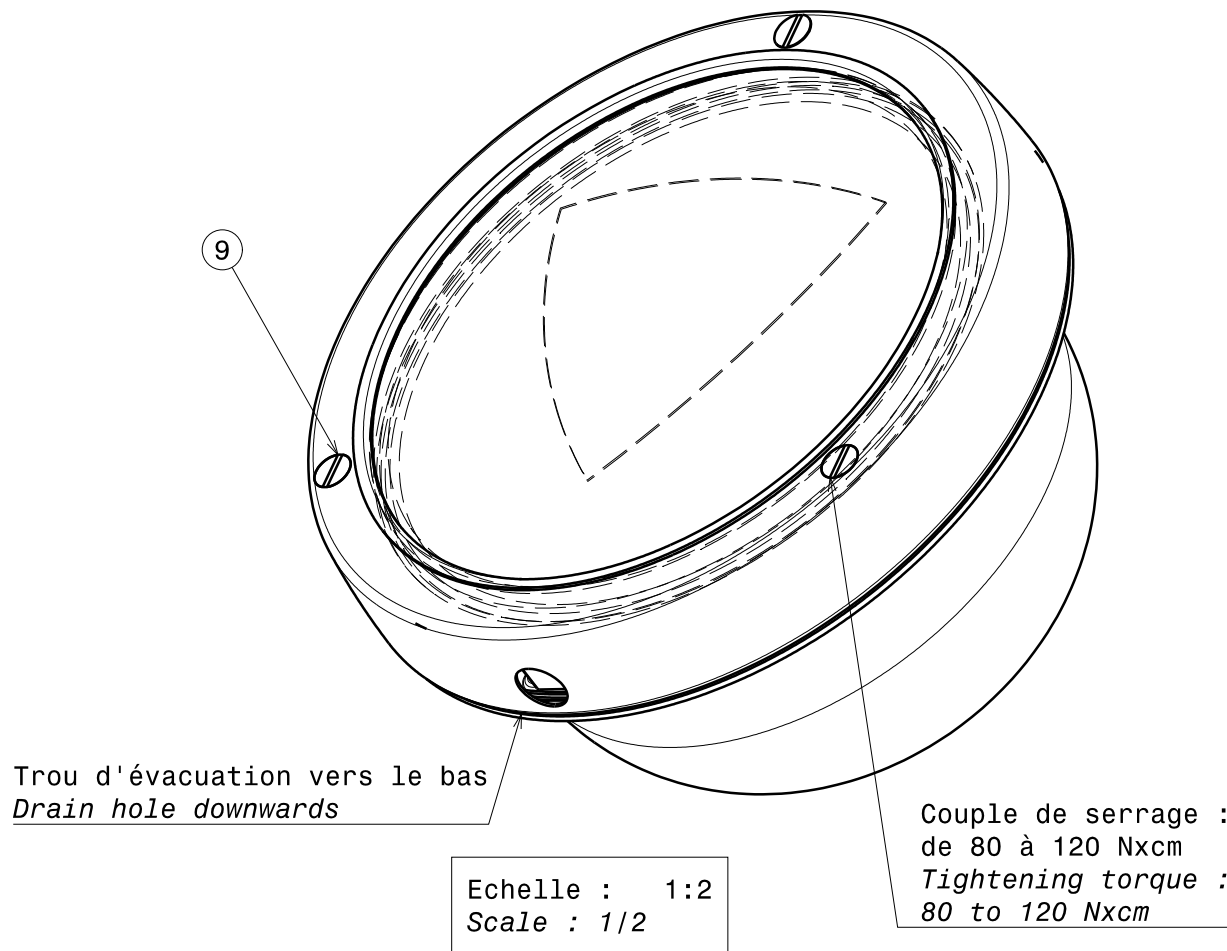


Coupe de serrage :
de 100 à 150 Nxcms
Tightening torque :
100 to 150 Nxcms

Coupe de serrage :
de 80 à 120 Nxcms
Tightening torque :
80 to 120 Nxcms

(enjoliveur non représenté)
Echelle : 1:2
(chromated bezel not represented)
Scale : 1:2

Rev/Ind:	Date:	Name/ Nom:	Description:	FDCM:	Approved by/ Approuvé par:
A	260606	FD	CREATION GPAO	62507	



Trou d'évacuation vers le bas
Drain hole downwards

Coupe de serrage :
de 80 à 120 Nxcms
Tightening torque :
80 to 120 Nxcms

Echelle : 1:2
Scale : 1/2


13	2C4370R345900	1	EPDM	JOINT DE CARROSSERIE BODY SEAL	23 grs
12	2C5141R339471	1	/	ECROU NYLSTOP H M4 NUT NYLSTOP H M4	/
11	2C5209R344300	2	PA66	CANON ISOLANT SPACER	/
10	2C5500R339170	1	XC10	VIS TC5X30 SCREW TC5X30	/
9	2C5003R340078	3	UZ39Pb2-X501	VIS FM6X12 SCREW FM6X12	/
8	2C4370R347900	1	Joint cellulaire SC42	JOINT CELLULAIRE CELLULAR SEAL	25 grs
7	2C5205R340100	4	PE	RONDELLE PLATE 12X5.5 PLAIN WASHER 12X5.5	/
6	2C4310R345480	1	Tôle ZPR	ENJOLIVEUR CHROME CHROMATED BEZEL	220 grs
5	2C5510R345700	3	CuZn39Pb3	ENTRETOISE ENJOLIVEUR CHROME CHROMATED BEZEL SPACER	/
4	2B4140S151110	1	/	CUVETTE EQUIPEE STEEL HOUSING EQUIPPED	276 grs
3	2C5002R384000	2	INOX	VIS FBH M5X20 SCREW FBH M5X20	/
2	2C4260R430771	1	XES 15/10	PATTE ARTICULATION REFLECTEUR REFLECTOR BRACKET	15 grs
1	2B9210A555800	1	/	FANAL A LEDS ROUGE D200 RED TAIL LIGHT D200	660 grs
Rep Part#	Codification Codification number	Quantité Quantity	Matière Material	Dénomination Name	Masse Weight

Description: **FANAL A LEDS ROUGE D200 (PLOTS + CUVELAGE)**
RED TAIL LIGHT D200 (for round standard blades
connector + steel housing)

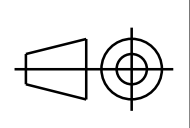
Size/format:
A2
CATIA V5

Drawn/Dessiné par: **F. DURAND** Date: **26/06/06** Weight/masse: **1,160 kgs** All dimensions in millimeters
Toutes dimensions en millimètres

Scale/Ech: **1/2**



AUTEROCHE INDUSTRIE
Drawing number/Référence:
2A9240A553300



Rev/ind:
A