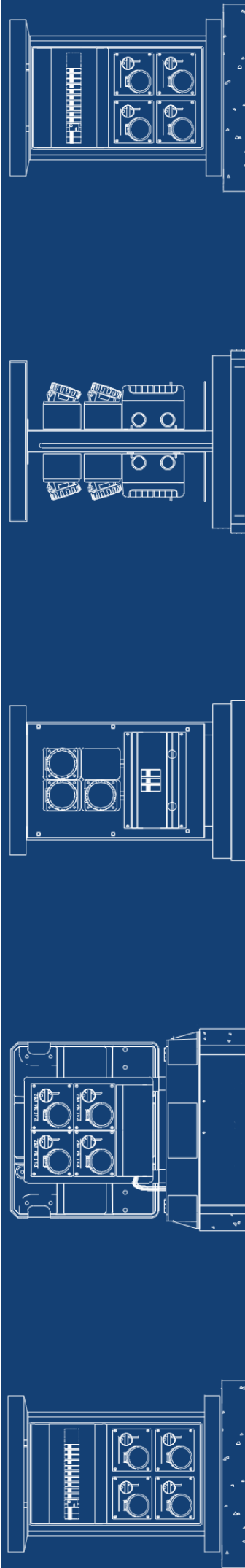




RETRACTABLE POWER TOWERS

for the distribution of energy and services

www.vmrsl.com



RETRACTABLE POWER TOWERS



THE COMPANY

New VMR is an Italian company, born with the aim of offering innovative solutions to improve the quality of urban spaces and to respect the environment, by preferring ecological, eco-friendly and low environmental impact systems. New VMR is the Italian company that designs and manufactures smart systems for the provision of services, complementing its proposal with sober and elegant designed urban furnishing accessories, using only eco-friendly materials and stainless steel.

ABOUT US

New VMR S.r.l. is an Italian manufacturer company of fixed and retractable towers for the supply of electric power and complementary services. We are a dynamic company that can be proud of a young team with a twenty-year experience in the sector and of high-quality products always capable of meeting the client's needs, also with tailor-made projects. The company was founded in Cantù, Italy, in 2003, thanks to the collaboration of young and dynamic staff and the desire to take a challenge; shortly after New VMR reached the global market and is trying to go even further in order to become a strong personality in the sector known worldwide.

MISSION

Our mission is to offer smart and consistent alternatives to the canons of design and street furniture to preserve the beauty of the landscapes and the integrity of architectural style of buildings, town centers and historic sites. That's not all: our solutions are designed respecting the natural environment with ecological and eco-friendly systems, resulting into the lowerest environmental impact possible. The satisfaction of our clients and partners is crucial for our company; given by the flexibility and the professionalism that New VMR team offers by creating tailor-made products with high-quality materials and an elegant and sophisticated design.

5 REASONS TO CHOOSE

1. Power and other services only when you need it

It's the innovative line of multi-functional **retractable power tower** for a smart and safer distribution of energy power and services, there... only when it's needed! The retractable power towers help to improve the quality and the safety of the surrounding environment.

2. Safer systems for the distribution of energy power and other services

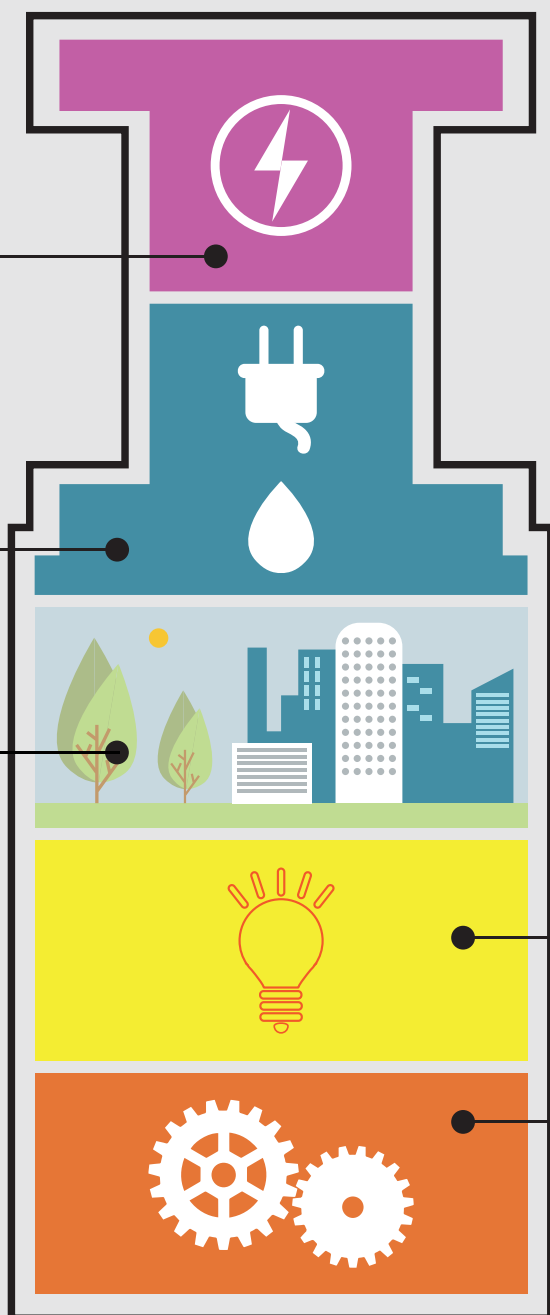
Using retractable power towers may be of help in order to prevent vandalism and an improper use of the services. The units are suitable for any environment, thanks to the possibility to use a wide range of finish. These are only a few of the advantages that can be achieved by using retractable supply power units, already a symbol of quality and safety!

3. Fields of application

In **public areas** for squares, market areas, historic centers, hotels, public parks, sports centers, malls, caravan parks and camps, theatres and stages, ports, small harbors and marinas, airports and hangars, railway stations and undergrounds and stadiums.

In **private areas** such as villas, swimming pools, gardens, apartment buildings, workshops and industrial facilities, retractable systems help saving space and keeping the surrounding environment unaltered.

New VMR



4. Different options

The unit structure comes in AISI 304 or AISI316L stainless steel, painted with epoxy-polyester powder in a vast range of colours. The manhole covers available are in AISI 304 or AISI 316L stainless steel 40KN or in spheroidal cast iron D400: they may come as round or square, or they can be fillable with any finish or material in order to be suitable everywhere and meet any needs. The movement of the retractable units can be tear-off manual, with worm screw and crank, or semi-automatic with gas springs. The containment box comes in both RBK300 concrete or in AISI 304 stainless steel.

5. Technical equipments

Distribution and control systems for electric power, water, compressed air, gas, data transmission, sound systems and more!





BOX 3

LSEA FOOTBALL CLUB

TRUE BLUE M

RETRACTABLE POWER TOWERS

Retractable power towers, flip lid units and floorboxes
There when you need them...hidden when you don't! New VMR designs and manufactures retractable power towers, in-ground units and flip lid units for indoors and outdoors: the perfect way to preserve the natural and the urban landscape.

WHAT IS A RETRACTABLE SUPPLY SYSTEM?

The retractable power and service supply systems guarantee safety and reliability and allow to gain access to the provision of services only when needed and, when you've done with it, they hide themselves away within our cities, avoiding vandalism and the improper use of public services. Thanks to retractable power tower, flip lid units and floorboxes any urban space will become polyvalent and ready to hold fairs or events at any time without having to set up temporary installations, thus helping to limit costs and save money.

The cover can be filled with any type of building material or you can place above an additional cover to optimize its camouflage; for example, in football fields the second option is commonly used by creating a cover filled with synthetic grass!

These are just some of the benefits that can be obtained by using the New VMR retractable service supply systems, of high-quality and reliability.

It's possible to equip the units with GRP sockets and with electrical panel made of butyl rubber.

PHOTO GALLERY



Sforza Castle in Milan, Italy



Hangar at Lecce-Galatina Airport, Italy



Hangar at Nuremberg Airport, Deutschland



Acaja Castle Square in Fossano, Italy



Trento Square, Italy



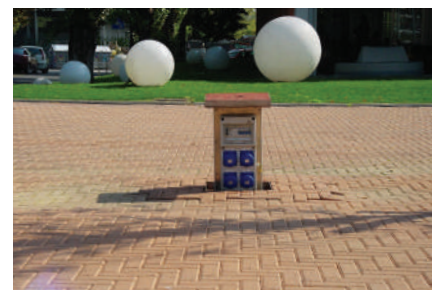
Music Bridge in Rome, Italy



Mirafiori District in Turin, Italy



Mirafiori District in Turin, Italy



Mirafiori District in Turin, Italy



Square in Bovisio Masciago, Italy



Parking area in Saluggia, Italy



Castle Square in Taunton, Great Britain



Square in Valfenera, Italy



Chelsea Stadium in London,
Great Britain



IMC Station in Naples, Italy



Papiniano street in Milan, Italy



Mazzini Square in Casale Monferrato,
Italy



Mazzini Square in Casale Monferrato,
Italy



Square in Este, Italy



Square in Este, Italy



Square in Este, Italy



Market Square in Bagnolo, Italy



Parking area in Oullins, France



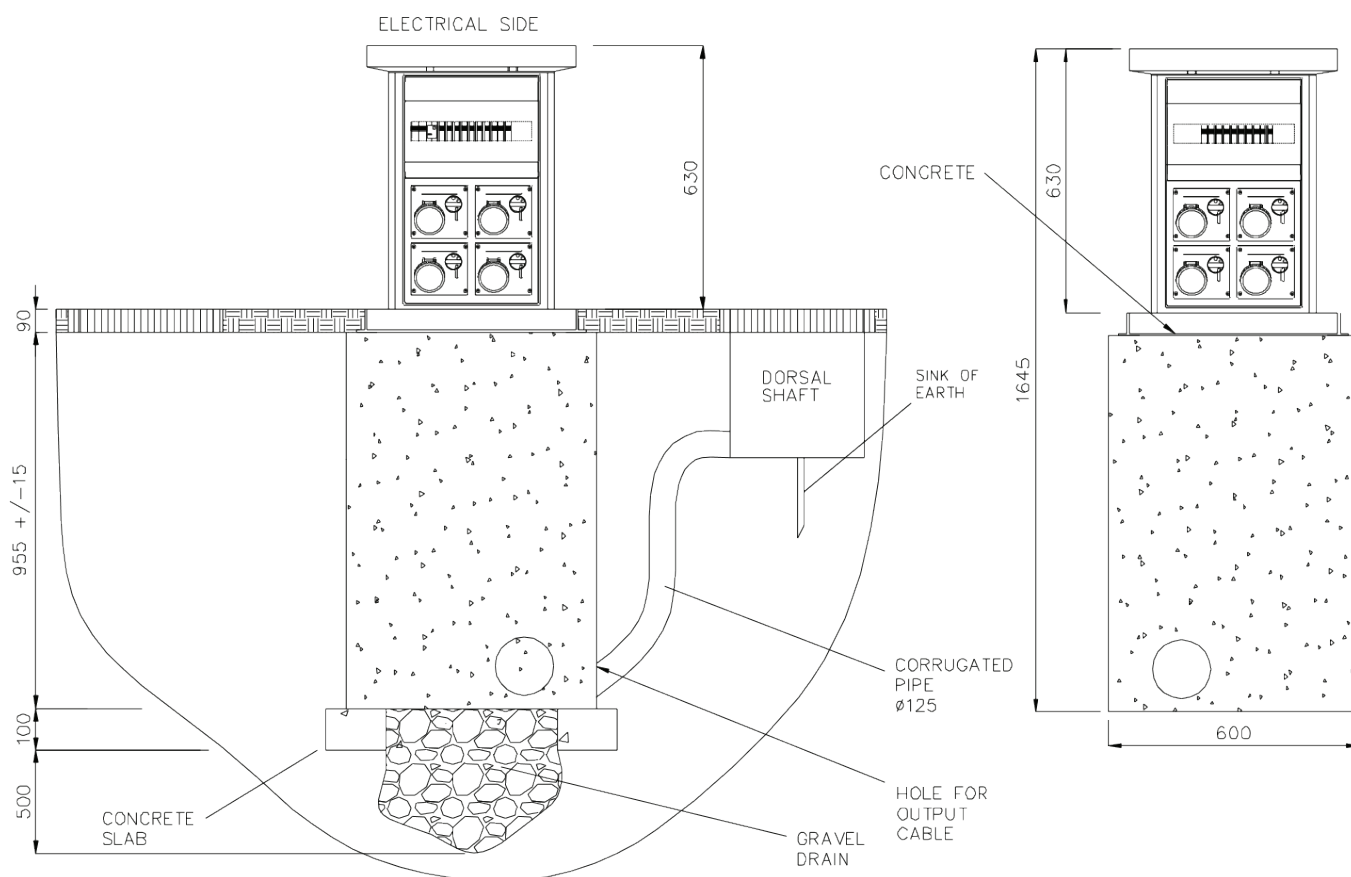
Nord Railway Station in Varese,
Italy

VM01

MECHANICAL CHARACTERISTICS

Retractable power tower mod.VM01 of NEW VMR for the distribution of energy and services with types of movement A/B; pressed AISI 304 stainless steel PAINTED RAL 1021 with two available sides for the electrical equipment and two sides for the insertion of water or air outlet. The stroke is ensured by self-lubricating polythene guides; manhole cover types A/B/C/D; net light 500x500mm; RBK concrete box with external dimensions of 600x600x1000mm.

TECHNICAL DRAWING





MANHOLE COVERS AVAILABLE

A



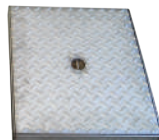
SPHEROIDAL
CAST IRON
manhole cover
D400 EN 124

B



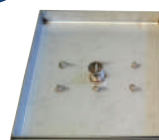
SPHEROIDAL
CAST IRON
manhole cover
to fill
C250 EN 124

C



STAINLESS
STEEL manhole
cover almond
finish 40KN

D



STAINLESS
STEEL manhole
cover almond
finish to fill
25KN

EQUIPMENT EXAMPLES

A

EVENTS/STAGE

- Nr 1 CEE 5p 63A socket with protection
- Nr 1 CEE 5p 32A socket with protection
- Nr 1 CEE 5p 16A socket with protection
- Nr 4 CEE 3p 16A sockets with protection
- Nr 1 power cable or terminal block

B

EVENTS/STAGE

- Nr 1 CEE 5p 125A socket with protection
- Nr 1 CEE 5p 63A socket with protection
- Nr 3 CEE 3p 16A sockets with protection
- Nr 1 power cable or terminal block

C

MARKETS/CAMPSITES

- Nr 1 CEE 5p 32A socket with protection
- Nr 1 CEE 5p 16A socket with protection
- Nr 6 CEE 3p 16A sockets with protection
- Nr 1 power cable or terminal block

D

MARKETS/CAMPSITES

- Nr 4 CEE 3p 16A sockets with protection
- Nr 4 1/2" ball valves
- Nr 1 flexible stainless steel pipe
- Nr 1 power cable or terminal block

TYPES OF MOVEMENT

A

raised by turning handle with worm screw

B

semi-automatic lifting with gas springs and release key

CONNECTION SYSTEM

- H07RN-F power cable (standard 3.00 mt)
- Terminal block

CONTAINMENT PIT

RBK concrete box

External dimensions 600x600mm with height 1000mm

Presence of pre-drilling for line entry with a diameter of 120mm

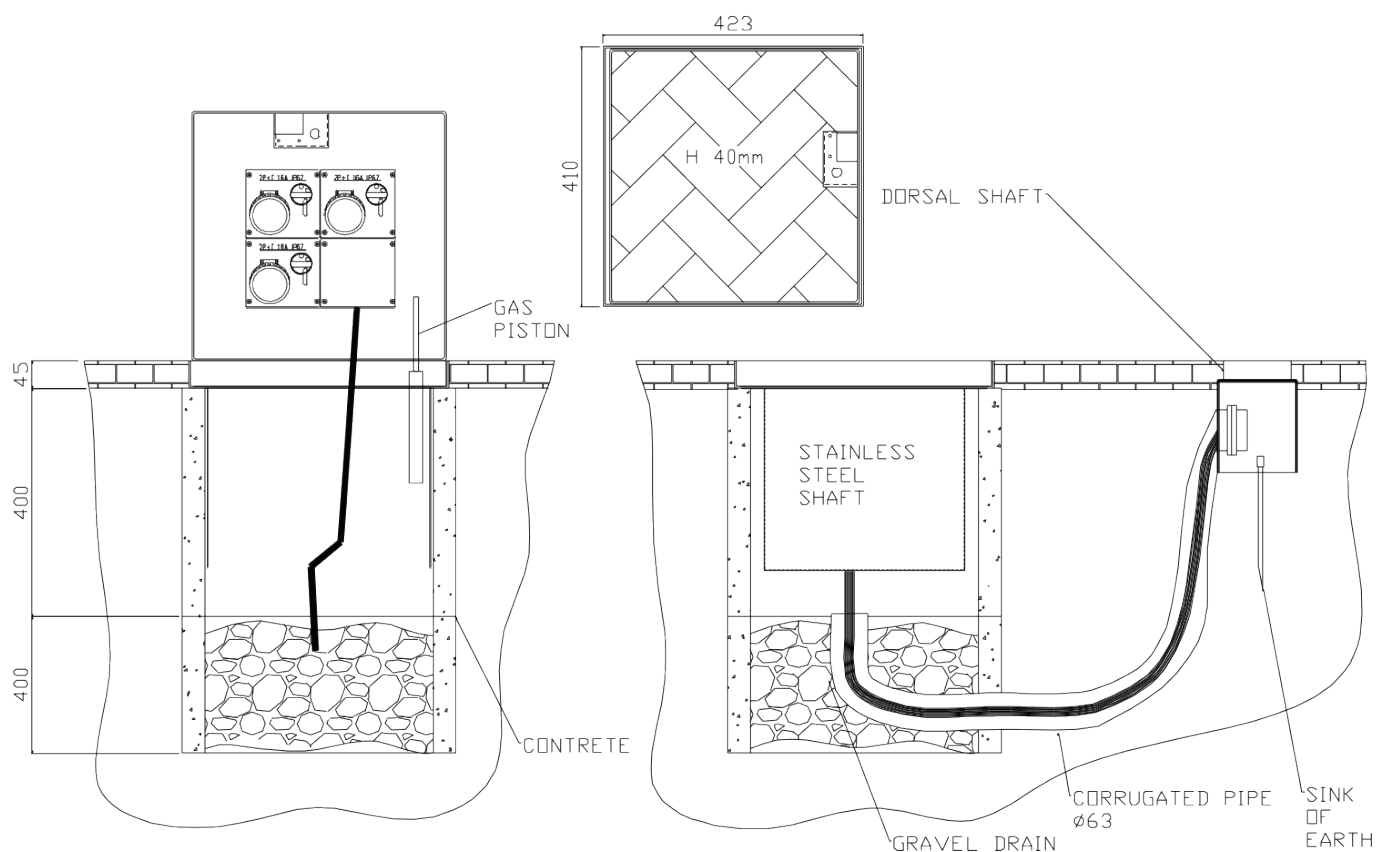
ADDITIONAL EQUIPMENT

- Electricity consumption meters
- Water consumption meters
- Compressed air couplings
- Audio/video connectors
- RJ-data/video/telephone jacks
- Water outlet/ valves 1/2" or 3/4"

MECHANICAL CHARACTERISTICS

The retractable power tower mod.VM02 4040 of New VMR for the distribution of electricity and services. Manhole cover in AISI 304 stainless steel type A/B with net light 400x400mm and height of 60mm. Opening eased by a pivot partially removable from the lid surface and by the double gas actuator springs. Closing guaranteed by a safety bronzed bayonet lock in AISI 304 stainless steel, operated by a square or triangular key. It's possible to use the unit with its cover in rest position, thanks to a special rubberized door for cable outlet (max 1x63A). Removable AISI304 stainless steel plate for the water or electrical equipment (in this case arranged for earthing). The containment structure is made of AISI 304 stainless steel of 20/10 thickness. Completed with RBK containment concrete box.

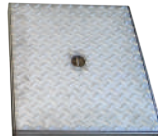
TECHNICAL DRAWING





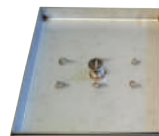
MANHOLE COVERS AVAILABLE

A



STAINLESS
STEEL manhole
cover almond
finish 40KN

B



STAINLESS
STEEL manhole
cover almond
finish to fill
25KN

EQUIPMENT EXAMPLES

A

EVENTS/STAGE

- Nr 1 CEE 5p 32A socket with protection
- Nr 1 CEE 3p 16A socket with protection
- Nr 1 power cable or terminal block

B

MARKETS/CAMPSITES

- Nr 1 CEE 5p 32A socket with fuse
- Nr 1 CEE 5p 16A socket with fuse
- Nr 2 CEE 3p 16A sockets with fuse
- Nr 1 power cable or terminal block

TYPE OF MOVEMENT

A

semi-automatic lifting with gas springs
and release key

CONNECTION SYSTEM

- H07RN-F power cable (standard 3.00 mt)
- Terminal block

CONTAINMENT PIT

RBK concrete box

External dimensions 500x500mm with height
400mm

Presence of pre-drilling for line entry with a
diameter of 120mm

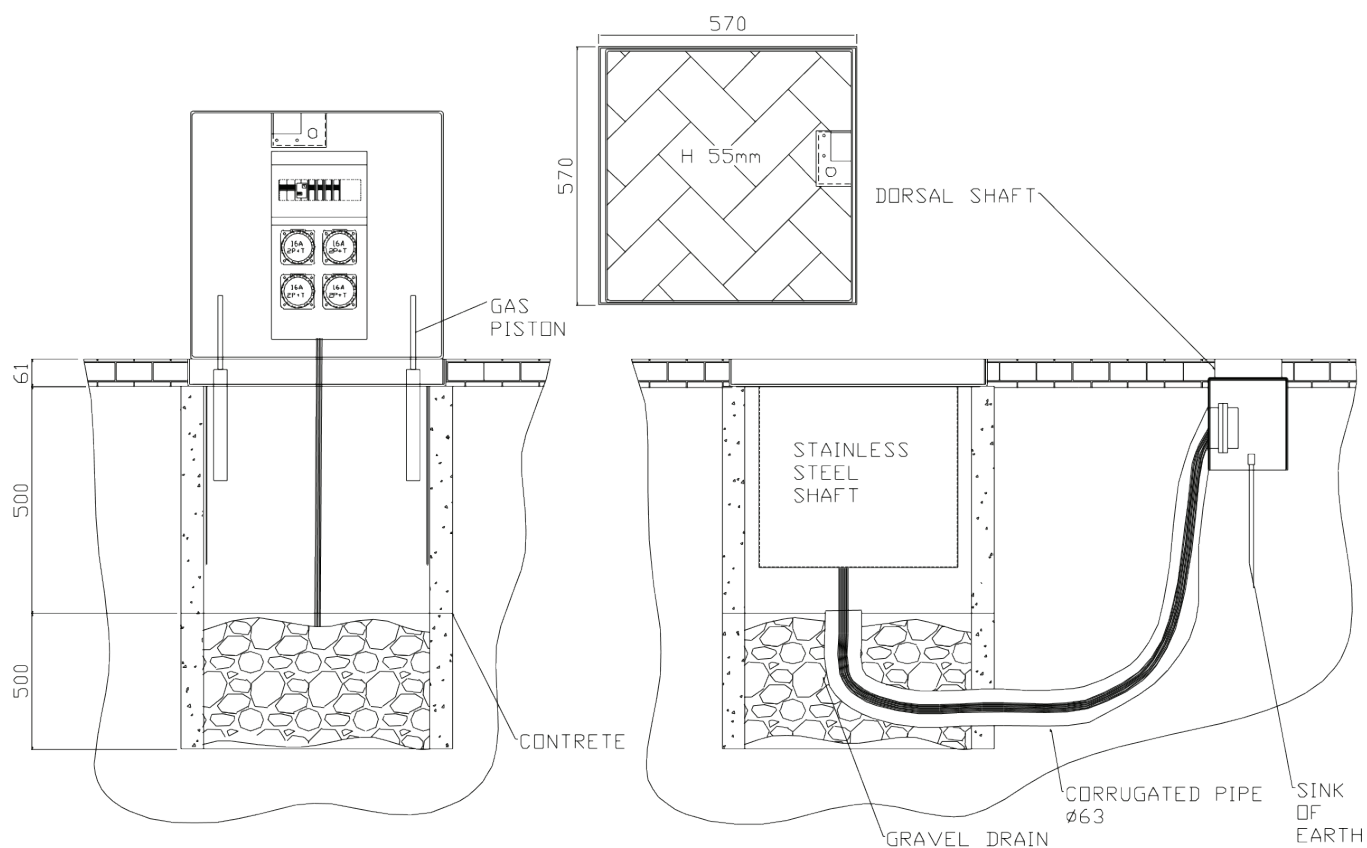
ADDITIONAL EQUIPMENT

- Electricity consumption meters
- Water consumption meters
- Compressed air couplings
- Audio/video connectors
- RJ-data/video/telephone jacks
- Water outlet/ valves $\frac{1}{2}$ " or $\frac{3}{4}$ "

MECHANICAL CHARACTERISTICS

The retractable power tower mod.VM02 5050 of New VMR for the distribution of electricity and services. Manhole cover in AISI 304 stainless steel type A/B with net light 500x500mm and height of 60mm. Opening eased by a pivot partially removable from the lid surface and by the double gas actuator springs. Closing guaranteed by a safety bronzed bayonet lock in AISI 304 stainless steel, operated by a square or triangular key. It's possible to use the unit with its cover in rest position, thanks to a special rubberized door for cable outlet (max 1x63A). Removable AISI304 stainless steel plate for the water or electrical equipment (in this case arranged for earthing). The containment structure is made of AISI 304 stainless steel of 20/10 thickness. Completed with RBK containment concrete box.

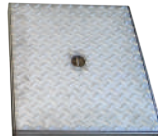
TECHNICAL DRAWING





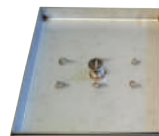
MANHOLE COVERS AVAILABLE

A



STAINLESS
STEEL manhole
cover almond
finish 40KN

B



STAINLESS
STEEL manhole
cover almond
finish to fill
25KN

EQUIPMENT EXAMPLES

A

EVENTS/STAGE

- Nr 1 5p 63A interlocked socket
- Nr 1 power cable or terminal block

B

EVENTS/STAGE

- Nr 1 CEE 5p 32A socket with protection
- Nr 1 CEE 5p 16A socket with protection
- Nr 2 CEE 3p 16A sockets with protection
- Nr 1 power cable or terminal block

C

MARKETS/CAMPSITES

- Nr 1 CEE 5p 32A socket with protection
- Nr 3 CEE 3p 16A sockets with protection
- Nr 1 power cable or terminal block

D

MARKETS/CAMPSITES

- Nr 4 CEE 3p 16A sockets with protection
- Nr 2 1/2" ball valves
- Nr 1 flexible stainless steel pipe
- Nr 1 power cable or terminal block

TYPE OF MOVEMENT

A

semi-automatic lifting with gas springs
and release key

CONNECTION SYSTEM

- H07RN-F power cable (standard 3.00 mt)
- Terminal block

CONTAINMENT PIT

RBK concrete box

External dimensions 590x590mm with height
500mm

Presence of pre-drilling for line entry with a
diameter of 120mm

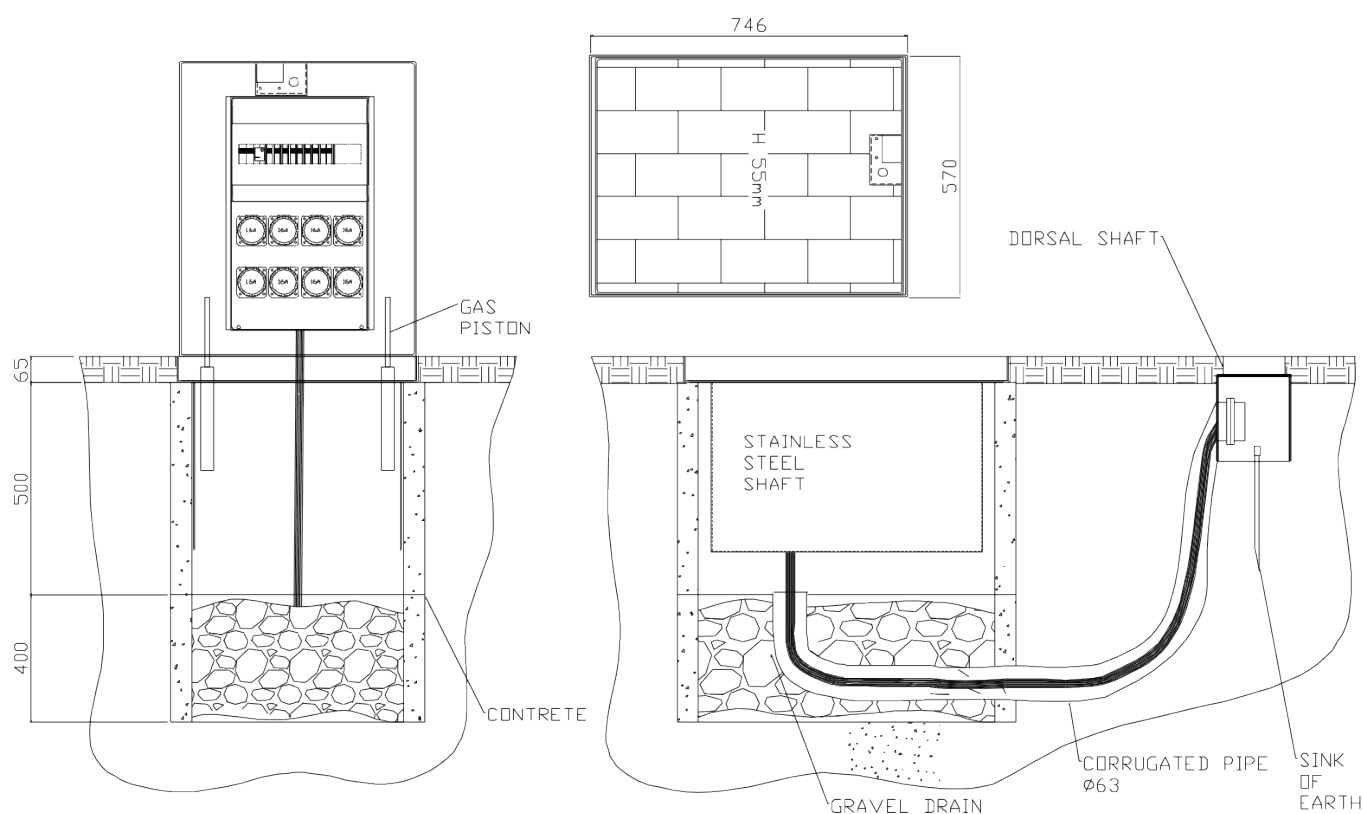
ADDITIONAL EQUIPMENT

- Electricity consumption meters
- Water consumption meters
- Compressed air couplings
- Audio/video connectors
- RJ-data/video/telephone jacks
- Water outlet/ valves 1/2" or 3/4"

MECHANICAL CHARACTERISTICS

The retractable power tower mod.VM02 7050 of New VMR for the distribution of electricity and services. Manhole cover in AISI 304 stainless steel type A/B with net light 700x500mm and height of 60mm. Opening eased by a pivot partially removable from the lid surface and by the double gas actuator springs. Closing guaranteed by a safety bronzed bayonet lock in AISI 304 stainless steel, operated by a square or triangular key. It's possible to use the unit with its cover in rest position, thanks to a special rubberized door for cable outlet (max 1x63A). Removable AISI304 stainless steel plate for the water or electrical equipment (in this case arranged for earthing). The containment structure is made of AISI 304 stainless steel of 20/10 thickness. Completed with AISI 304 stainless steel containment box.

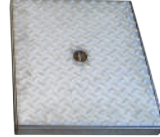
TECHNICAL DRAWING





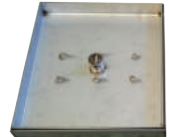
MANHOLE COVERS AVAILABLE

A



STAINLESS
STEEL manhole
cover almond
finish 40KN

B



STAINLESS
STEEL manhole
cover almond
finish to fill
25KN

EQUIPMENT EXAMPLES

A

EVENTS/STAGE

- Nr 2 5p 63A interlocked sockets
- Nr 2 power cables or terminal blocks

B

EVENTS/STAGE

- Nr 1 CEE 5p 32A socket with protection
- Nr 1 CEE 5p 16A socket with protection
- Nr 4 CEE 3p 16A sockets with protection
- Nr 1 power cable or terminal block

C

MARKETS/CAMPSITES

- Nr 1 CEE 5p 125A socket with protection

D

MARKETS/CAMPSITES

- Nr 8 CEE 3p 16A sockets with protection
- Nr 2 1/2" ball valves
- Nr 1 flexible stainless steel pipe
- Nr 1 power cable or terminal block

TYPE OF MOVEMENT

A

semi-automatic lifting with gas springs
and release key

CONNECTION SYSTEM

- H07RN-F power cable (standard 3.00 mt)
- Terminal block

CONTAINMENT PIT

STAINLESS STEEL AISI304

External dimensions 710x520mm with height 650mm

Presence of pre-drilling for line entry with a diameter of 120mm

ADDITIONAL EQUIPMENT

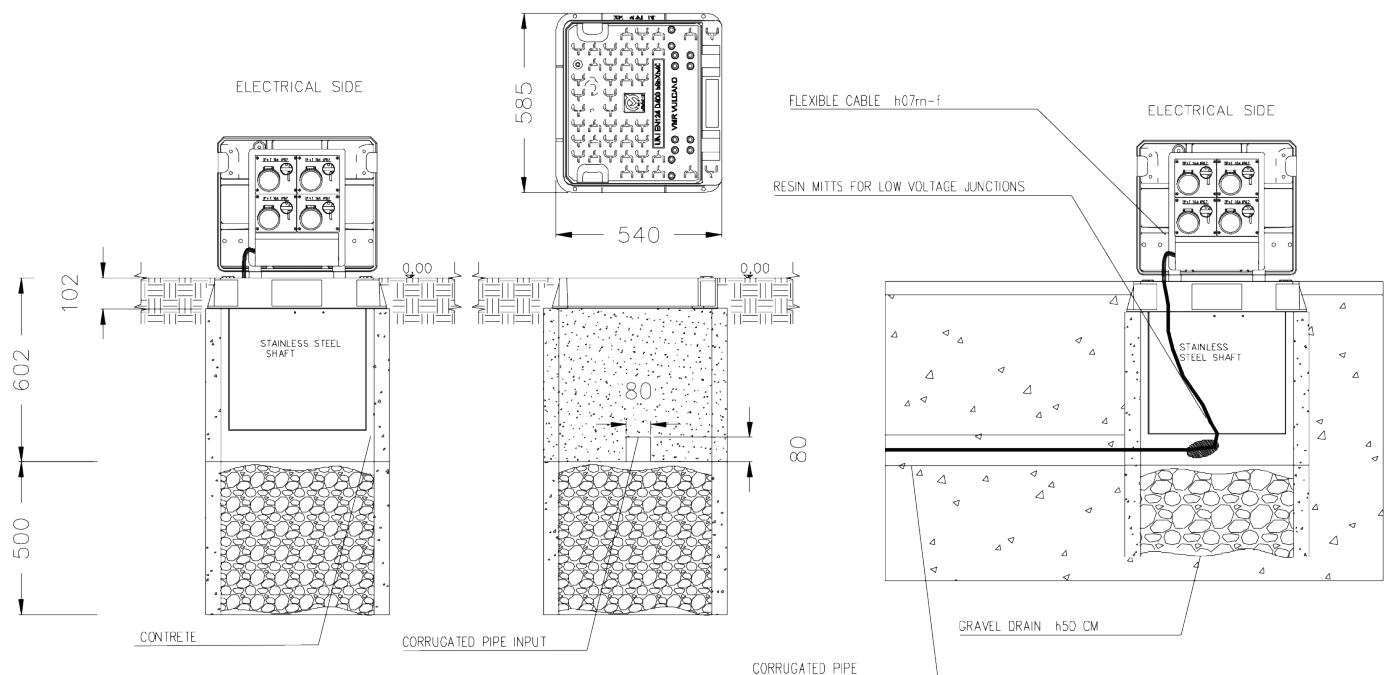
- Electricity consumption meters
- Water consumption meters
- Compressed air couplings
- Audio/video connectors
- RJ-data/video/telephone jacks
- Water outlet/ valves 1/2" or 3/4"

VM03

MECHANICAL CHARACTERISTICS

The VM03 retractable power tower of New VMR for the distribution of electrical power and complementary services, such as water, compressed air, data transmission and audio systems, is composed of its concrete product and a spheroidal cast iron manhole cover with non-slip surface according to UNI EN 124 class D400, with 585x540mm rectangular base with net light 485x407mm and complete with two rubberized doors for cable outlet. Non-skid surface bearing the mandatory class D400, EN 124 and certification body mark. Manhole cover produced in establishments certified according to ISO 9001 quality standards. The union of the cover and the frame is ensured by replaceable bronze hinges. The opening of the manhole cover is eased by a double gas actuator and a pivot partially removable from the lid surface. The closing of the manhole cover is guaranteed by the bronze lock with bayonet protected from dust and water by a hinged door. The containment structure is made of stainless steel AISI304 of 20/10 thickness. Completed with RBK containment concrete box.

TECHNICAL DRAWING





MANHOLE COVER AVAILABLE

A



SPHEROIDAL
CAST IRON
manhole cover
D400 EN 124

EQUIPMENT EXAMPLES

A

EVENTS/STAGE

- Nr 1 CEE 5p 63A socket with protection
- Nr 1 power cable or terminal block

B

EVENTS/STAGE

- Nr 1 CEE 5p 32A socket with protection
- Nr 1 CEE 5p 16A socket with protection
- Nr 1 CEE 3p 16A socket with protection
- Nr 1 power cable or terminal block

C

MARKETS/CAMPSITES

- Nr 4 CEE 3p 16A sockets with protection
- Nr 1 power cable or terminal block

D

MARKETS/CAMPSITES

- Nr 2 CEE 3p 16A sockets with protection
- Nr 2 1/2" ball valves
- Nr 1 flexible stainless steel pipe
- Nr 1 power cable or terminal block

TYPE OF MOVEMENT

A

semi-automatic lifting with gas springs and release key

CONNECTION SYSTEM

- H07RN-F power cable (standard 3.00 mt)
- Terminal block

CONTAINMENT PIT

RBK concrete box

External dimensions 590x590mm with height 500mm

Presence of pre-drilling for line entry with a diameter of 120mm

ADDITIONAL EQUIPMENT

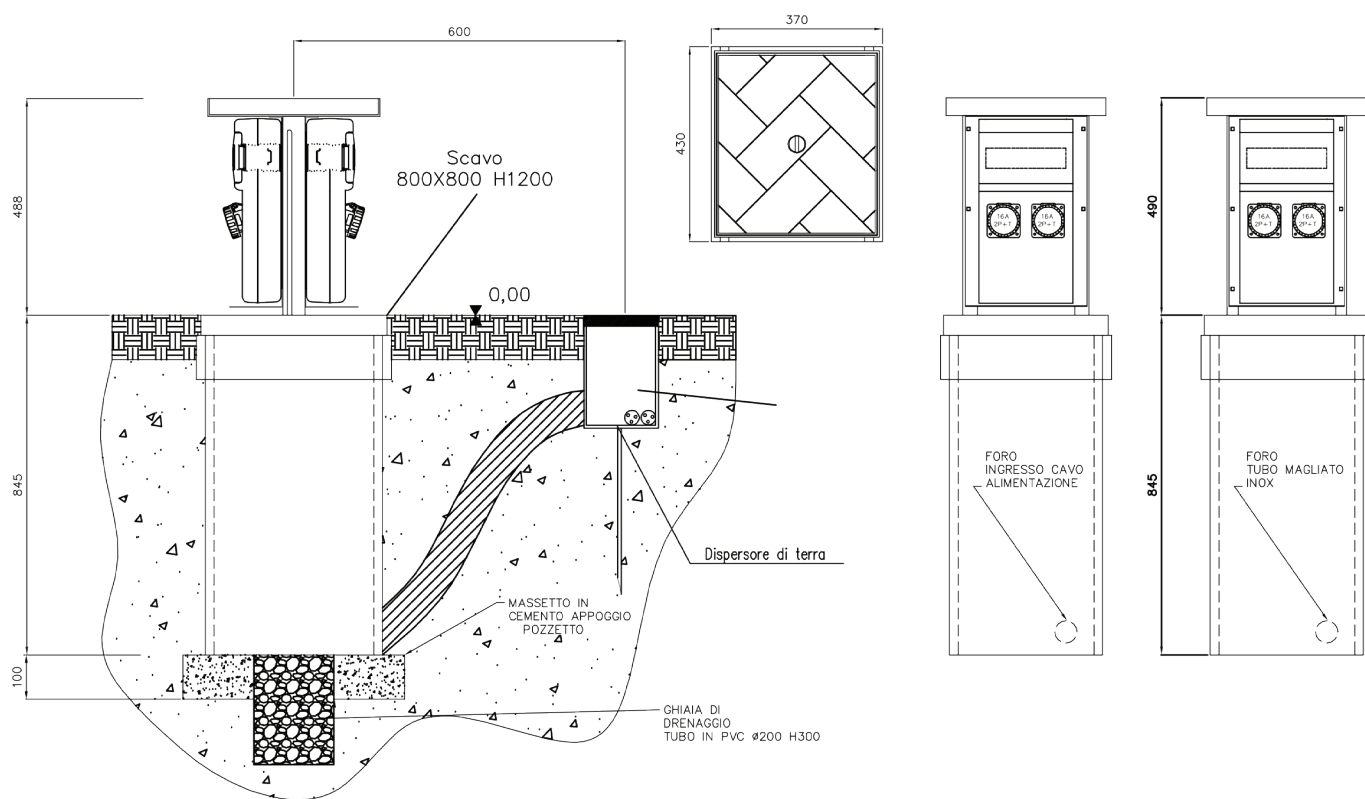
- Electricity consumption meters
- Water consumption meters
- Compressed air couplings
- Audio/video connectors
- RJ-data/video/telephone jacks
- Water outlet/ valves 1/2" or 3/4"

VM04

MECHANICAL CHARACTERISTICS

Retractable power tower mod.VM04 of NEW VMR for the distribution of energy and services with manhole cover types A/B; pressed AISI 304 stainless steel PAINTED RAL 1021 with two available sides for the electrical equipment and two sides for the insertion of water or air outlet. Completed with its RBK concrete box. Raised manually by its key untill the end of the stroke.

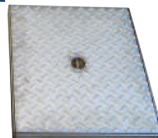
TECHNICAL DRAWING





MANHOLE COVERS AVAILABLE

A



STAINLESS
STEEL manhole
cover almond
finish 40KN

B



STAINLESS
STEEL manhole
cover almond
finish to fill
25KN

EQUIPMENT EXAMPLES

A

EVENTS/STAGE

- Nr 1 CEE 5p 32A socket with protection
- Nr 1 CEE 5p 16A socket with protection
- Nr 3 CEE 3p 16A sockets with protection
- Nr 1 power cable or terminal block

B

EVENTS/STAGE

- Nr 1 CEE 5p 32A socket with protection
- Nr 1 CEE 5p 16A socket with protection
- Nr 4 CEE 3p 16A sockets with protection
- Nr 1 power cable or terminal block

C

MARKETS/CAMPSITES

- Nr 1 CEE 5p 16A socket with protection
- Nr 6 CEE 3p 16A sockets with protection
- Nr 1 power cable or terminal block

D

MARKETS/CAMPSITES

- Nr 4 CEE 3p 16A sockets with protection
- Nr 2 1/2" ball valves
- Nr 1 flexible stainless steel pipe
- Nr 1 power cable or terminal block

TYPE OF MOVEMENT

A

Raised manually by its key until the end of the stroke.

CONNECTION SYSTEM

- H07RN-F power cable (standard 3.00 mt)
- Terminal block

CONTAINMENT PIT

RBK concrete box

External dimensions 410x480mm with height 790mm

Presence of pre-drilling for line entry with a diameter of 120mm

ADDITIONAL EQUIPMENT

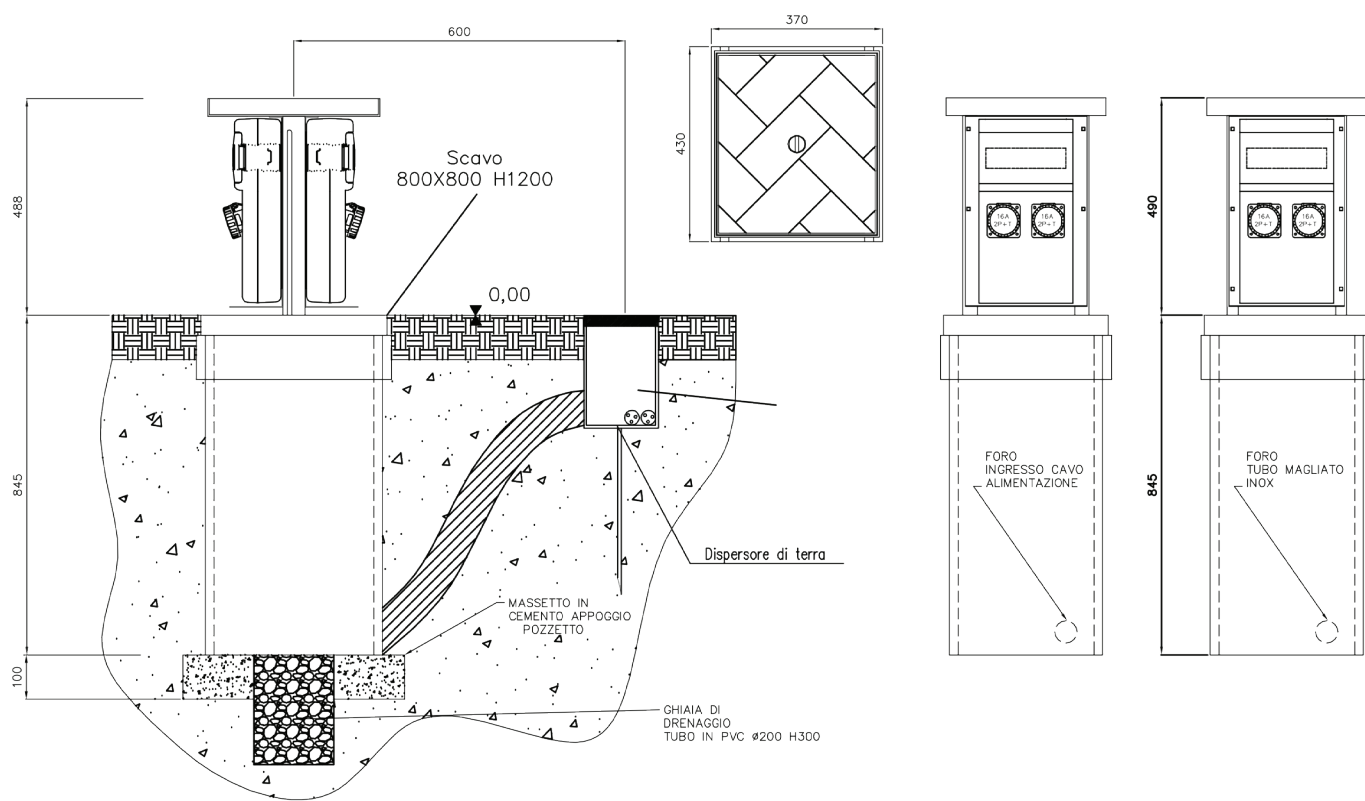
- Electricity consumption meters
- Water consumption meters
- Compressed air couplings
- Audio/video connectors
- RJ-data/video/telephone jacks
- Water outlet/ valves 1/2" or 3/4"

VM05

MECHANICAL CHARACTERISTICS

Retractable power tower mod.VM05 of NEW VMR for the distribution of energy and services with manhole cover types A/B; pressed AISI 304 stainless steel PAINTED RAL 1021 with two available sides for the electrical equipment and two sides for the insertion of water or air outlet. Completed with its RBK concrete box. Types of movement A/B.

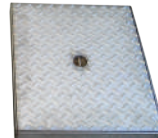
TECHNICAL DRAWING





MANHOLE COVERS AVAILABLE

A



STAINLESS
STEEL manhole
cover almond
finish 40KN

B



STAINLESS
STEEL manhole
cover almond
finish to fill
25KN

EQUIPMENT EXAMPLES

A

EVENTS/STAGE

- Nr 1 CEE 5p 32A socket with protection
- Nr 1 CEE 5p 16A socket with protection
- Nr 3 CEE 3p 16A sockets with protection
- Nr 1 power cable or terminal block

B

EVENTS/STAGE

- Nr 1 CEE 5p 32A socket with protection
- Nr 1 CEE 5p 16A socket with protection
- Nr 4 CEE 3p 16A sockets with protection
- Nr 1 power cable or terminal block

C

MARKETS/CAMPSITES

- Nr 8 CEE 3p 16A sockets with protection
- Nr 1 power cable or terminal block

D

MARKETS/CAMPSITES

- Nr 4 CEE 3p 16A sockets with protection
- Nr 2 1/2" ball valves
- Nr 1 flexible stainless steel pipe
- Nr 1 power cable or terminal block

TYPES OF MOVEMENT

A

raised by turning handle with worm screw

B

semi-automatic lifting with gas springs and release key

CONNECTION SYSTEM

- H07RN-F power cable (standard 3.00 mt)
- Terminal block

CONTAINMENT PIT

RBK concrete box

External dimensions 410x480mm with height 790mm

Presence of pre-drilling for line entry with a diameter of 120mm

ADDITIONAL EQUIPMENT

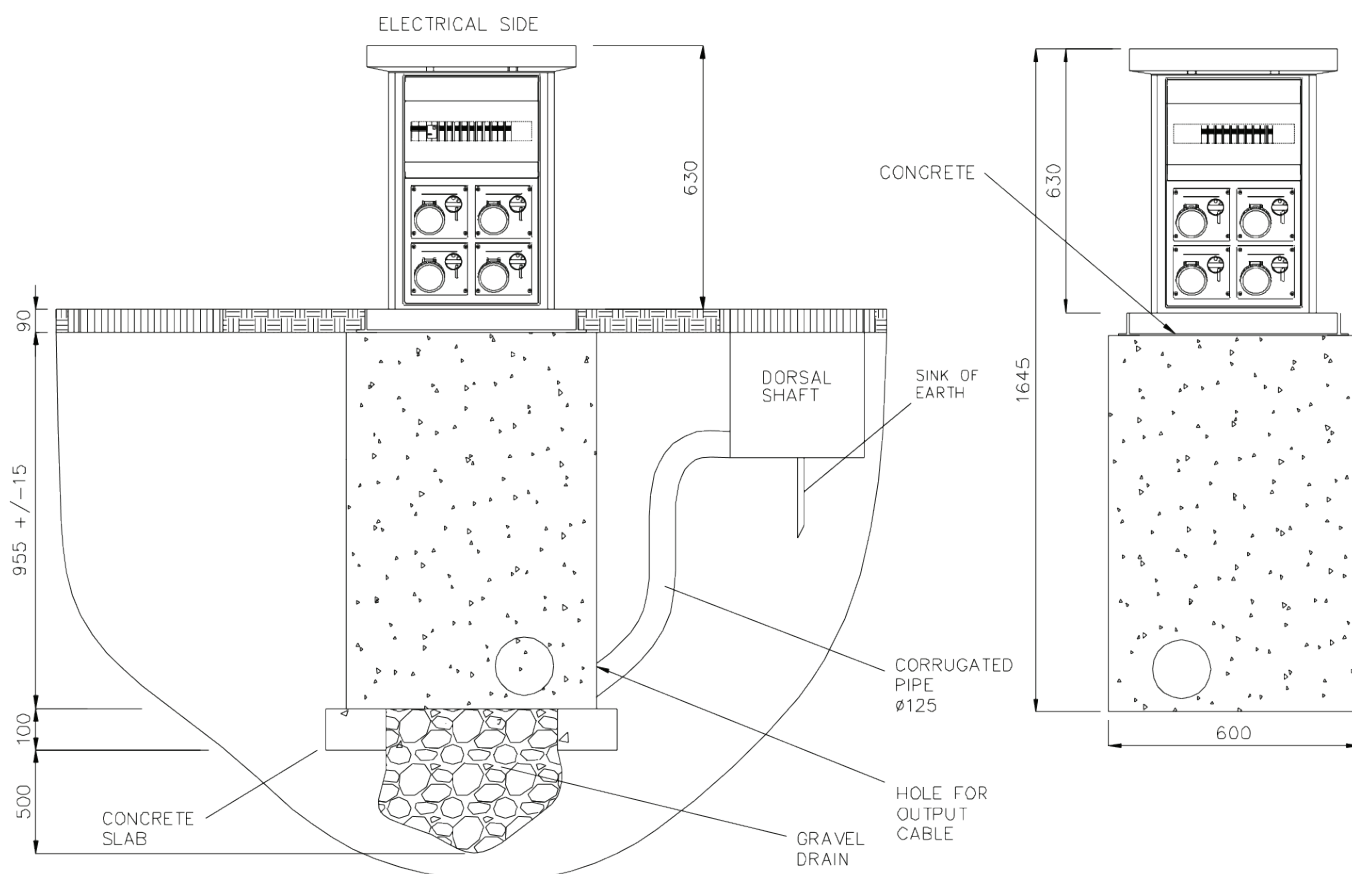
- Electricity consumption meters
- Water consumption meters
- Compressed air couplings
- Audio/video connectors
- RJ-data/video/telephone jacks
- Water outlet/ valves 1/2" or 3/4"

VM06

MECHANICAL CHARACTERISTICS

Retractable power tower mod.VM06 of NEW VMR for the distribution of energy and services with types of movement A/B; pressed AISI 304 stainless steel PAINTED RAL 1021 with two available sides for the electrical equipment and two sides for the insertion of water or air outlet. The stroke is ensured by self-lubricating polythene guides; manhole cover type A; net light 500x500mm; RBK concrete box with external dimensions of 600x600x1000mm.

TECHNICAL DRAWING





MANHOLE COVER AVAILABLE

A



SPHEROIDAL
CAST IRON
manhole cover
D400 EN 124

EQUIPMENT EXAMPLES

A

EVENTS/STAGE

- Nr 1 CEE 5p 63A socket with protection
- Nr 1 CEE 5p 32A socket with protection
- Nr 1 CEE 5p 16A socket with protection
- Nr 4 CEE 3p 16A sockets with protection
- Nr 1 power cable or terminal block

B

EVENTS/STAGE

- Nr 1 CEE 5p 125A socket with protection
- Nr 1 CEE 5p 63A socket with protection
- Nr 3 CEE 3p 16A sockets with protection
- Nr 1 power cable or terminal block

C

MARKETS/CAMPSITES

- Nr 1 CEE 5p 32A socket with protection
- Nr 1 CEE 5p 16A socket with protection
- Nr 6 CEE 3p 16A sockets with protection
- Nr 1 power cable or terminal block

D

MARKETS/CAMPSITES

- Nr 4 CEE 3p 16A sockets with protection
- Nr 4 1/2" ball valves
- Nr 1 flexible stainless steel pipe
- Nr 1 power cable or terminal block

TYPES OF MOVEMENT

A

raised by turning handle with worm screw

B

semi-automatic lifting with gas springs and release key

CONNECTION SYSTEM

- H07RN-F power cable (standard 3.00 mt)
- Terminal block

CONTAINMENT PIT

RBK concrete box

External dimensions 600x600mm with height 1000mm

Presence of pre-drilling for line entry with a diameter of 120mm

ADDITIONAL EQUIPMENT

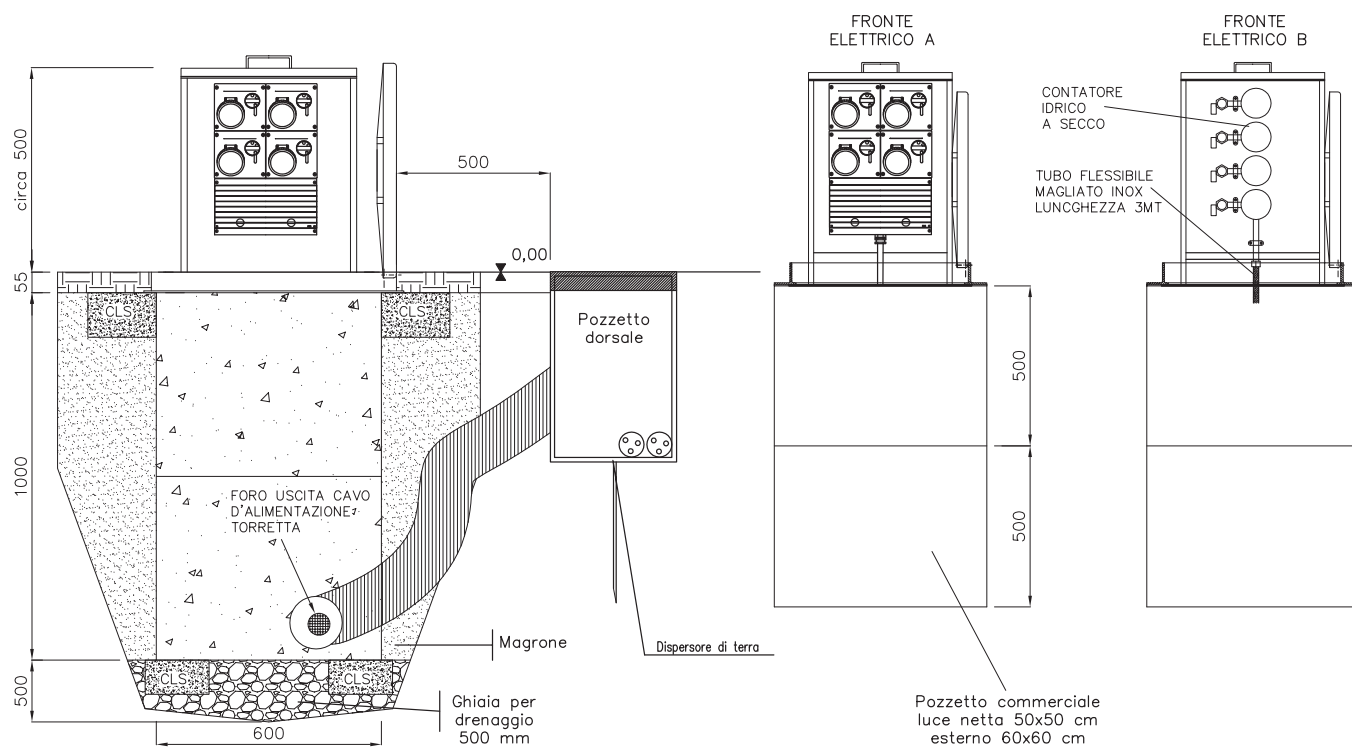
- Electricity consumption meters
- Water consumption meters
- Compressed air couplings
- Audio/video connectors
- RJ-data/video/telephone jacks
- Water outlet/ valves 1/2" or 3/4"

VM07

MECHANICAL CHARACTERISTICS

Retractable power tower mod. VM07 of NEW VMR for the distribution of energy and services with manhole cover type A/B/C hinged with tilting movement. Structure made of AISI 304 stainless steel with folded and painted ral 1021. Raised manually with special ergonomic handle until is reached the block position. Containment box made of RBK concrete with pre-drilled holes for the cable entry on the 4 fronts.

TECHNICAL DRAWING





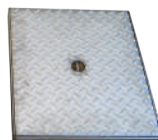
MANHOLE COVERS AVAILABLE

A



SPHEROIDAL
CAST IRON
manhole cover
D400 EN 124

B



STAINLESS
STEEL manhole
cover almond
finish 40KN

C



STAINLESS
STEEL manhole
cover almond
finish to fill
25KN

EQUIPMENT EXAMPLES

A

EVENTS/STAGE

- Nr 1 CEE 5p 63A socket with protection
- Nr 1 CEE 5p 32A socket with protection
- Nr 1 CEE 5p 16A socket with protection
- Nr 2 CEE 3p 16A sockets with protection
- Nr 1 power cable or terminal block

B

EVENTS/STAGE

- Nr 1 CEE 5p 32A socket with protection
- Nr 1 CEE 5p 16A socket with protection
- Nr 4 CEE 3p 16A sockets with protection
- Nr 1 power cable or terminal block

C

MARKETS/CAMPSITES

- Nr 1 CEE 5p 32A socket with protection
- Nr 1 CEE 5p 16A socket with protection
- Nr 6 CEE 3p 16A sockets with protection
- Nr 1 power cable or terminal block

D

MARKETS/CAMPSITES

- Nr 4 CEE 3p 16A sockets with protection
- Nr 4 1/2" ball valves
- Nr 1 flexible stainless steel pipe
- Nr 1 power cable or terminal block

MOVEMENT OF POWER TOWER

A

raised by turning handle with worm screw

MOVEMENT OF MANHOLE COVER

A

semi-automatic lifting with gas springs and release key

CONNECTION SYSTEM

- H07RN-F power cable (standard 3.00 mt)
- Terminal block

CONTAINMENT PIT

RBK concrete box

External dimensions 600x600mm with height 1000mm

Presence of pre-drilling for line entry with a diameter of 120mm

ADDITIONAL EQUIPMENT

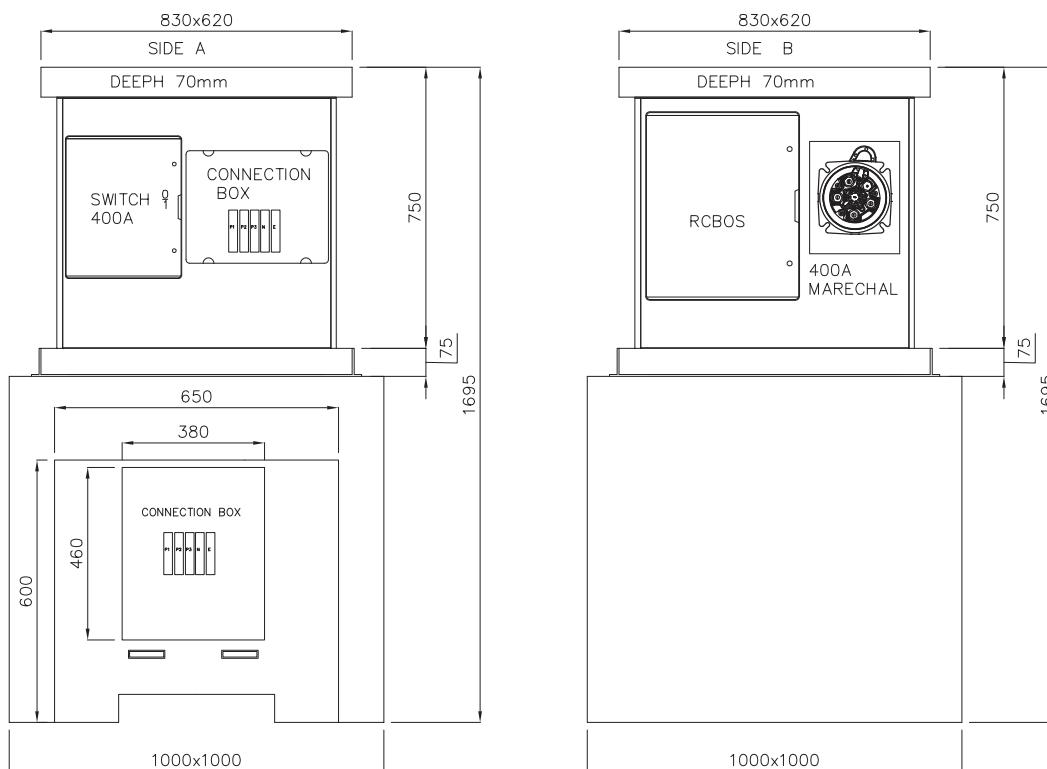
- Electricity consumption meters
- Water consumption meters
- Compressed air couplings
- Audio/video connectors
- RJ-data/video/telephone jacks
- Water outlet/ valves 1/2" or 3/4"

VM08

MECHANICAL CHARACTERISTICS

Retractable power tower mod.VM08 of NEW VMR for the distribution of energy and services with types of movementation A; pressed AISI 304 stainless steel PAINTED RAL 1021 with two available sides for the electrical equipment and two sides for the insertion of water or air outlet. The stroke is ensured by self-lubricating polythene guides; manhole cover types A/B; net light 500x500mm; RBK concrete box with external dimensions of 1000x1000x1200mm.

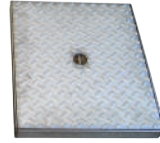
TECHNICAL DRAWING





MANHOLE COVERS AVAILABLE

A



STAINLESS
STEEL manhole
cover almond
finish 40KN

B



STAINLESS
STEEL manhole
cover almond
finish to fill
25KN

EQUIPMENT EXAMPLES

A

EVENTS/STAGE

- Nr 2 CEE 5p 125A sockets with protection
- Nr 3 CEE 5p 32A sockets with protection
- Nr 2 CEE 5p 16A sockets with protection
- Nr 6 CEE 3p 16A sockets with protection
- Nr 1 power cable or terminal block

B

EVENTS/STAGE

- Nr 1 CEE 5p 125A socket with protection
- Nr 1 CEE 5p 63A socket with protection
- Nr 2 CEE 5p 32A sockets with protection
- Nr 1 CEE 5p 16A socket with protection
- Nr 3 CEE 3p 16A sockets with protection
- Nr 1 power cable or terminal block

C

MARKETS/CAMPSITES

- Nr 4 CEE 5p 32A sockets with protection
- Nr 2 CEE 5p 16A sockets with protection
- Nr 12 CEE 3p 16A sockets with protection
- Nr 1 power cable or terminal block

D

MARKETS/CAMPSITES

- Nr 8 CEE 3p 16A sockets with protection
- Nr 8 1/2" ball valves
- Nr 1 flexible stainless steel pipe
- Nr 1 power cable or terminal block

TYPE OF MOVEMENT

A

raised by turning handle with worm screw

CONNECTION SYSTEM

- H07RN-F power cable (standard 3.00 mt)
- Terminal block

CONTAINMENT PIT

RBK concrete box

External dimensions 600x600mm with height 1000mm

Presence of pre-drilling for line entry with a diameter of 120mm

ADDITIONAL EQUIPMENT

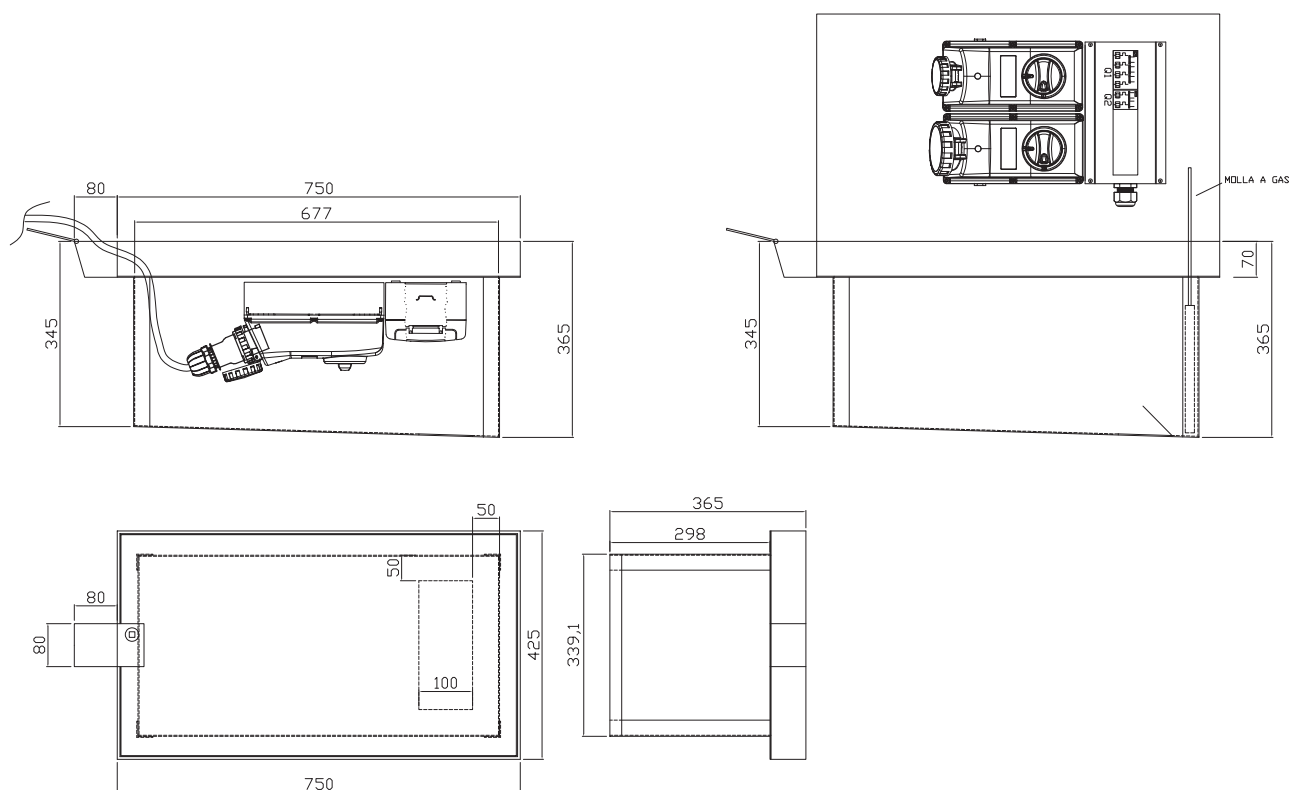
- Electricity consumption meters
- Water consumption meters
- Compressed air couplings
- Audio/video connectors
- RJ-data/video/telephone jacks
- Water outlet/ valves 1/2" or 3/4"

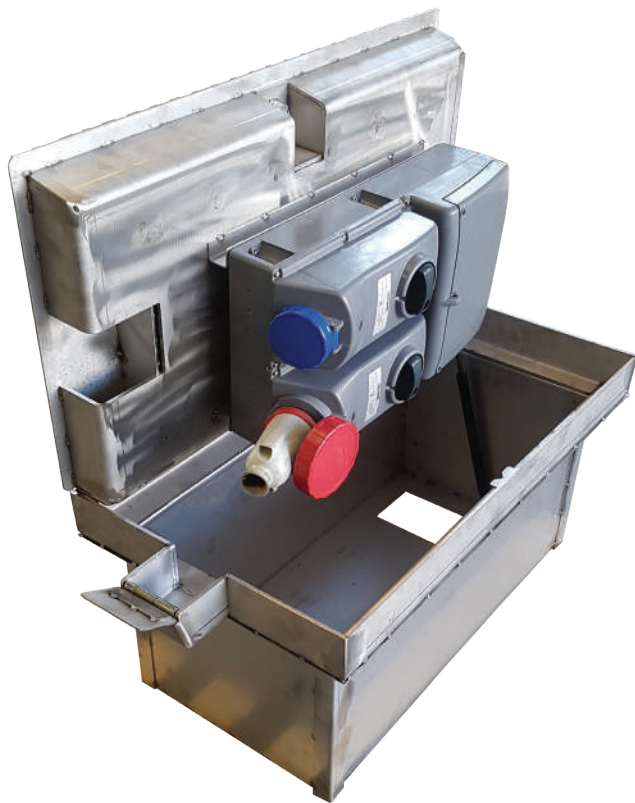
VM09

MECHANICAL CHARACTERISTICS

The retractable power tower mod.VM09 of New VMR for the distribution of electricity and services. Manhole cover in AISI 304 stainless steel type A/B resistant to the load D400. Opening eased by a pivot partially removable from the lid surface and by the double gas actuator springs. Closing guaranteed by a safety bronzed bayonet lock in AISI 304 stainless steel, operated by a square key. It's possible to use the unit with its cover in rest position, thanks to a door for cable outlet (max 600A), with has the identification number of the station. Removable AISI304 stainless steel plate for the water or electrical equipment (in this case arranged for earthing). The containment structure is made of AISI 304 stainless steel of 20/10 thickness.

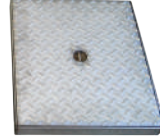
TECHNICAL DRAWING





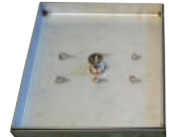
MANHOLE COVERS AVAILABLE

A



STAINLESS
STEEL manhole
cover almond
finish 40KN

B



STAINLESS
STEEL manhole
cover almond
finish to fill
25KN

EQUIPMENT EXAMPLES

A

EVENTS/STAGE

- Nr 1 CEE 5p 32A socket with protection
- Nr 1 CEE 3p 16A socket with protection
- Nr 1 power cable or terminal block

B

MARKETS/CAMPSITES

- Nr 1 CEE 5p 32A socket with fuse
- Nr 1 CEE 5p 16A socket with fuse
- Nr 2 CEE 3p 16A sockets with fuse
- Nr 1 power cable or terminal block

TYPE OF MOVEMENT

A

semi-automatic lifting with gas springs
and release key

CONNECTION SYSTEM

- H07RN-F power cable (standard 3.00 mt)
- Terminal block

CONTAINMENT PIT

RBK concrete box

External dimensions 500x500mm with height
400mm

Presence of pre-drilling for line entry with a
diameter of 120mm

ADDITIONAL EQUIPMENT

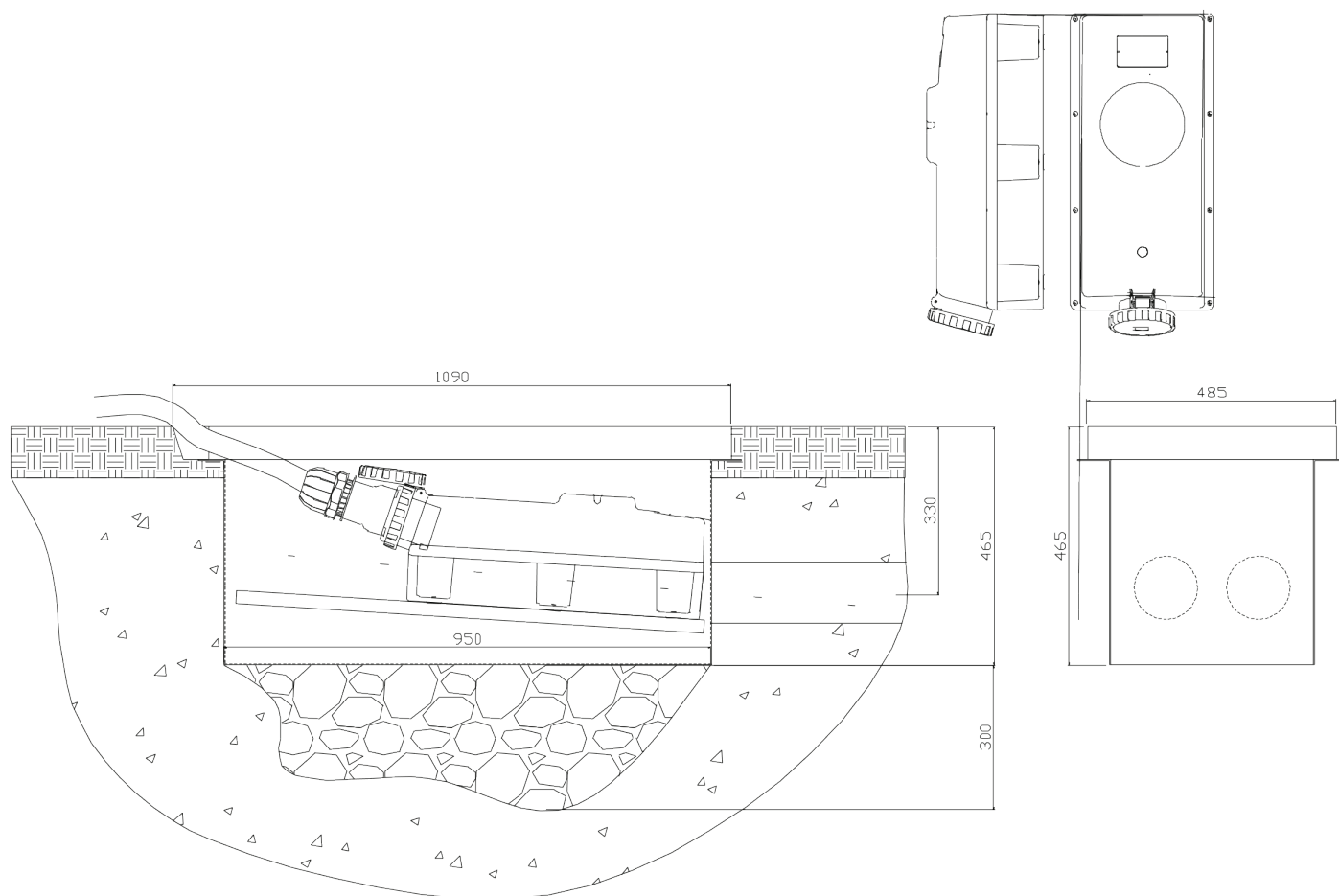
- Electricity consumption meters
- Water consumption meters
- Compressed air couplings
- Audio/video connectors
- RJ-data/video/telephone jacks
- Water outlet/ valves $\frac{1}{2}$ " or $\frac{3}{4}$ "

VM09

MECHANICAL CHARACTERISTICS

Retractable power tower mod. VM09 of New VMR for the distribution of energy power. Tilting cover, type A/B, in AISI304 stainless steel resistant to the load D400, with door in stainless steel for the cable outlet in order to allow to use the unit with inserted plug UP TO 600A; the stainless steel door has the identification number of the station. Semi-automatic movement with gas springs, with an inclination system for the equipment holder plate in order to ease the plug insertion. Bayonet square-based lock. The containment structure is made of AISI 304 stainless steel of 20/10 thickness.

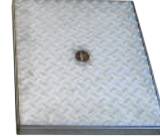
TECHNICAL DRAWING





MANHOLE COVERS AVAILABLE

A



STAINLESS
STEEL manhole
cover almond
finish 40KN

B



STAINLESS
STEEL manhole
cover almond
finish to fill
25KN

EQUIPMENT EXAMPLES

A

EVENTS/STAGE

- Nr 1 5p 63A interlocked socket
- Nr 1 power cable or terminal block

B

EVENTS/STAGE

- Nr 1 CEE 5p 32A socket with protection
- Nr 1 CEE 5p 16A socket with protection
- Nr 2 CEE 3p 16A sockets with protection
- Nr 1 power cable or terminal block

C

MARKETS/CAMPSITES

- Nr 1 CEE 5p 32A socket with protection
- Nr 3 CEE 3p 16A sockets with protection
- Nr 1 power cable or terminal block

D

MARKETS/CAMPSITES

- Nr 4 CEE 3p 16A sockets with protection
- Nr 2 1/2" ball valves
- Nr 1 flexible stainless steel pipe
- Nr 1 power cable or terminal block

TYPE OF MOVEMENT

A

semi-automatic lifting with gas springs
and release key

CONNECTION SYSTEM

- H07RN-F power cable (standard 3.00 mt)
- Terminal block

CONTAINMENT PIT

RBK concrete box

External dimensions 590x590mm with height
500mm

Presence of pre-drilling for line entry with a
diameter of 120mm

ADDITIONAL EQUIPMENT

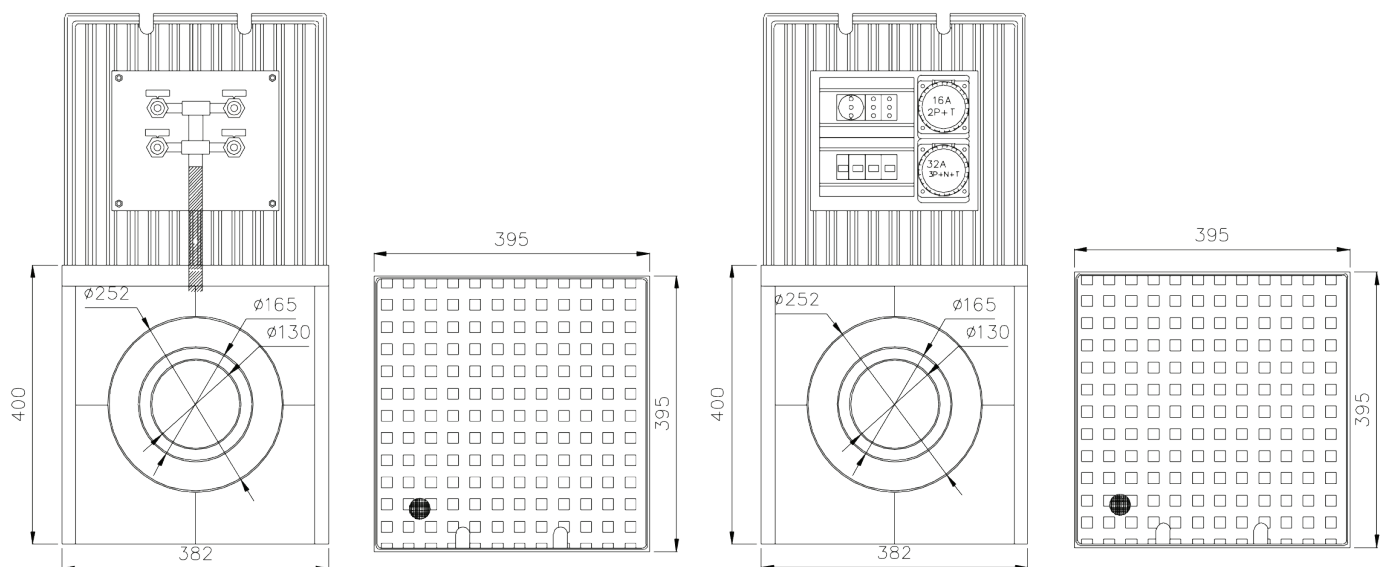
- Electricity consumption meters
- Water consumption meters
- Compressed air couplings
- Audio/video connectors
- RJ-data/video/telephone jacks
- Water outlet/ valves 1/2" or 3/4"

VM10

MECHANICAL CHARACTERISTICS

NEW VMR concealed power tower for the energy distribution mod.VM010, made of a plastic (polypropylene) sump and pad, hinged by stainless steel plates. The opening is facilitated by its handle hidden within the manhole cover, completed with a hole for the cable outlet. Presence of steel rod to block the lid when open.

TECHNICAL DRAWING





MANHOLE COVER AVAILABLE

A



Polypropylene
manhole cover

EQUIPMENT EXAMPLES

A VILLAS/CONDOMINIUM/GARDENS PRIVATE SWIMMING POOL

- Nr 1 CEE 5p 32A socket with protection
- Nr 1 CEE 3p 16A socket with protection
- Nr 1 power cable or terminal block

B VILLAS/CONDOMINIUM/GARDENS PRIVATE SWIMMING POOL

- Nr 1 CEE 5p 32A socket with protection
- Nr 1 power cable or terminal block

C VILLAS/CONDOMINIUM/GARDENS PRIVATE SWIMMING POOL

- Nr 1 CEE 5p 32A socket with protection
- Nr 1 CEE 5p 16A socket with protection
- Nr 2 CEE 3p 16A sockets with protection
- Nr 1 power cable or terminal block

D VILLAS/CONDOMINIUM/GARDENS PRIVATE SWIMMING POOL

- Nr 1 CEE 5p 32A socket with fuses
- Nr 1 CEE 5p 16A socket with fuses
- Nr 2 CEE 3p 16A sockets with fuses
- Nr 1 power cable or terminal block

TYPE OF MOVEMENT

A raised by turning handle hidden within the cover

CONNECTION SYSTEM

- H07RN-F power cable (standard 3.00 mt)
- Terminal block

CONTAINMENT PIT

Polypropylene box

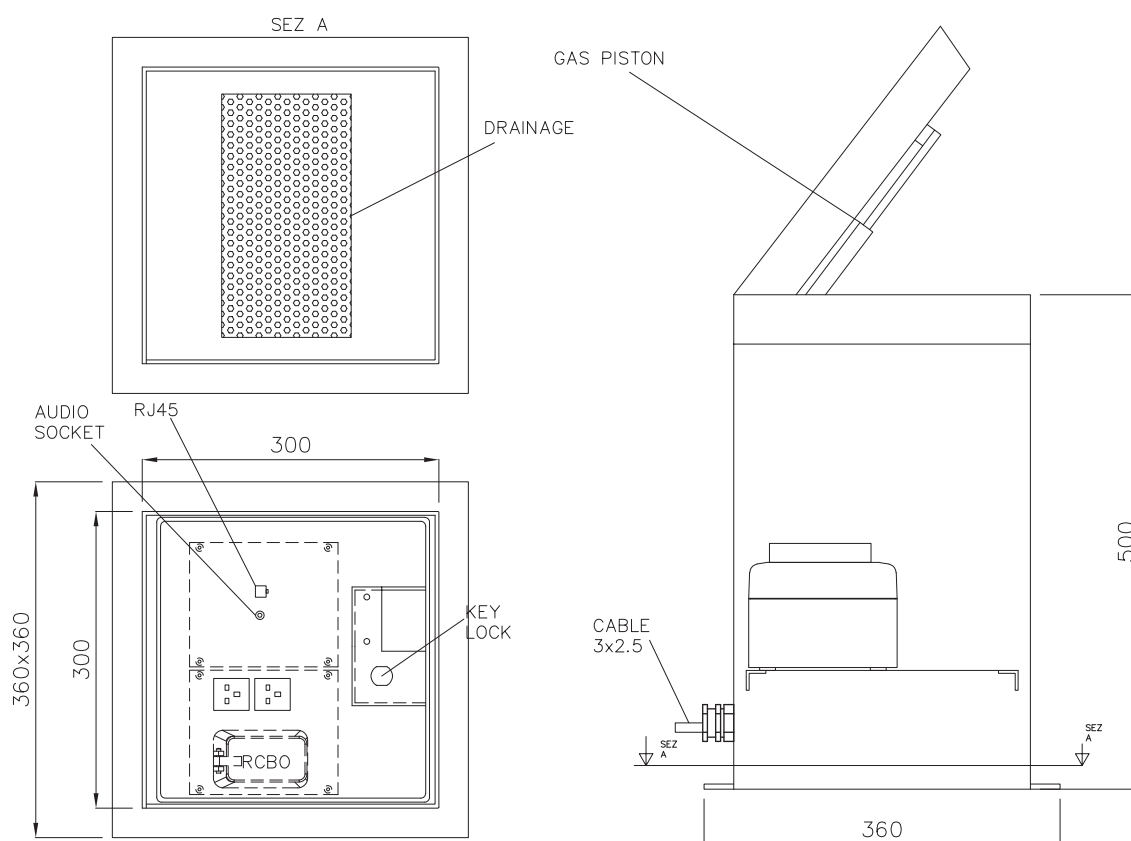
ADDITIONAL EQUIPMENT

- Electricity consumption meters
- Water consumption meters
- Compressed air couplings
- Audio/video connectors
- RJ-data/video/telephone jacks
- Water outlet/ valves $\frac{1}{2}$ " or $\frac{3}{4}$ "

MECHANICAL CHARACTERISTICS

NEW VMR FLOORBOX 3030 concealed power tower for the distribution of energy and services. Floorbox h 250mm, lid filling depth 40mm. Tilting cover in stainless steel AISI304 resistant to loads up to 12 tons, prearranged for cables to allow use with plug inserted max. 16A. Semi-automatic handling with double gas spring. Structure made of AISI 304 stainless steel with thickness 5mm. Bayonet square-based lock.

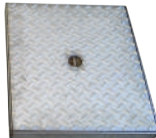
TECHNICAL DRAWING





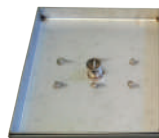
MANHOLE COVERS AVAILABLE

A



STAINLESS
STEEL manhole
cover almond
finish 40KN

B



STAINLESS
STEEL manhole
cover almond
finish to fill
25KN

EQUIPMENT EXAMPLES

A

INDOORS/OUTDOORS

- Nr 1 interlocked socket 5p 16A
- Nr 1 RCBO's
- Nr 2 RJ45 cat.6 sockets
- Nr 1 power cable or terminal block

B

INDOORS/OUTDOORS

- Nr 2 interlocked sockets 3p 16A
- Nr 2 RCBO's
- Nr 1 power cable or terminal block

TYPE OF MOVEMENT

A

Raised manually by its key until the end of the stroke.

CONNECTION SYSTEM

- H07RN-F power cable (standard 3.00 mt)
- Terminal block

CONTAINMENT PIT

RBK concrete box

External dimensions 300x300mm with height 250mm

Presence of pre-drilling for line entry with a diameter of 120mm

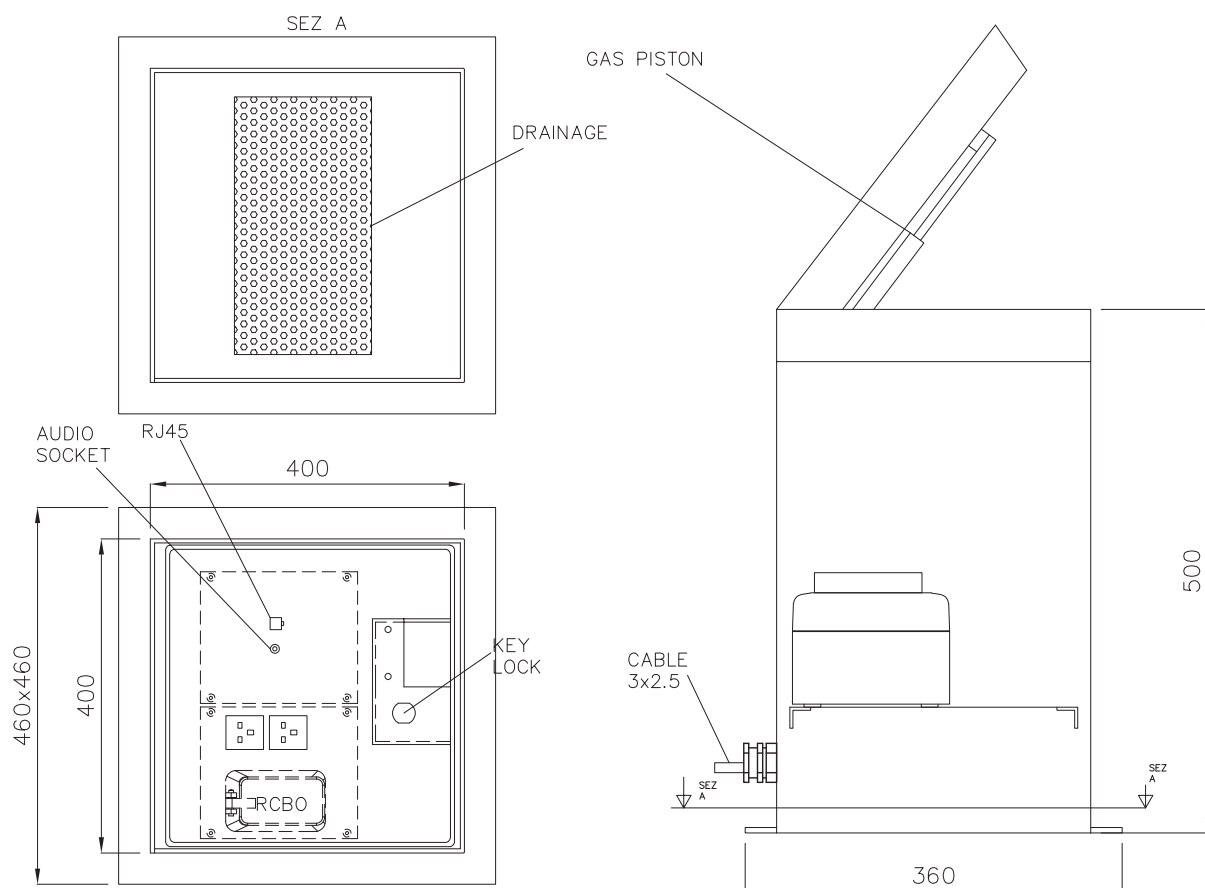
ADDITIONAL EQUIPMENT

- Electricity consumption meters
- Water consumption meters
- Compressed air couplings
- Audio/video connectors
- RJ-data/video/telephone jacks
- Water outlet/ valves $\frac{1}{2}$ " or $\frac{3}{4}$ "

MECHANICAL CHARACTERISTICS

NEW VMR FLOORBOX 4040 concealed power tower for the distribution of energy and services. Floorbox h 300mm, lid filling depth 40mm. Tilting cover in stainless steel AISI304 resistant to loads up to 12 tons, prearranged for cables to allow use with plug inserted max. 16A. Semi-automatic handling with double gas spring. Structure made of AISI 304 stainless steel with thickness 5mm. Bayonet square-based lock.

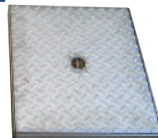
TECHNICAL DRAWING





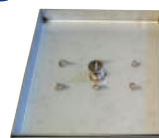
MANHOLE COVERS AVAILABLE

A



STAINLESS
STEEL manhole
cover almond
finish 40KN

B



STAINLESS
STEEL manhole
cover almond
finish to fill
25KN

EQUIPMENT EXAMPLES

A

INDOORS/OUTDOORS

- Nr 1 interlocked socket 3p 16A
- Nr 1 RCBO's
- Nr 4 RJ45 cat.6 sockets
- Nr 1 power cable or terminal block

B

INDOORS/OUTDOORS

- Nr 1 interlocked socket 5p 16A
- Nr 1 RCBO's
- Nr 4 RJ45 cat.6 sockets
- Nr 1 power cable or terminal block

C

INDOORS/OUTDOORS

- Nr 1 interlocked socket 5p 32A
- Nr 1 RCBO's
- Nr 4 RJ45 cat.6 sockets
- Nr 1 power cable or terminal block

TYPE OF MOVEMENT

A

Raised manually by its key until the end of the stroke.

CONNECTION SYSTEM

- H07RN-F power cable (standard 3.00 mt)
- Terminal block

CONTAINMENT PIT

RBK concrete box

External dimensions 400x400mm with height 300mm

Presence of pre-drilling for line entry with a diameter of 120mm

ADDITIONAL EQUIPMENT

- Electricity consumption meters
- Water consumption meters
- Compressed air couplings
- Audio/video connectors
- RJ-data/video/telephone jacks
- Water outlet/ valves $\frac{1}{2}$ " or $\frac{3}{4}$ "

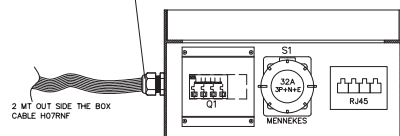
MECHANICAL CHARACTERISTICS

NEW VMR FLOORBOX 5050 concealed power tower for the distribution of energy and services. Floorbox h 350mm, lid filling depth 40mm. Tilting cover in stainless steel AISI304 resistant to loads up to 12 tons, prearranged for cables to allow use with plug inserted max. 16A. Semi-automatic handling with double gas spring. Structure made of AISI 304 stainless steel with thickness 5mm. Bayonet square-based lock.

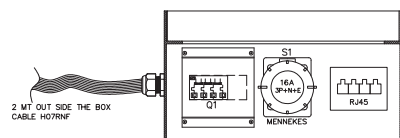
TECHNICAL DRAWING

PG SCREW FOR POWER CONNECTION

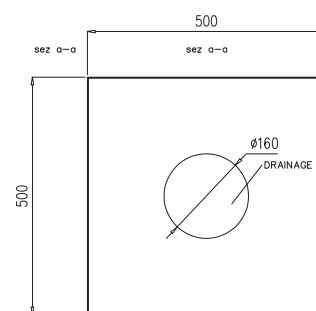
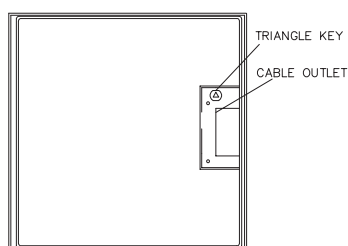
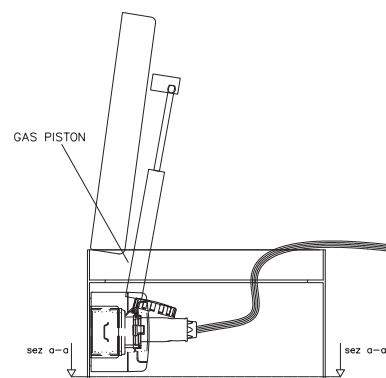
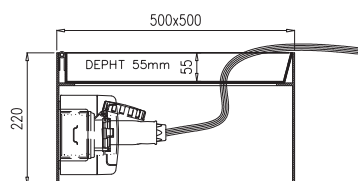
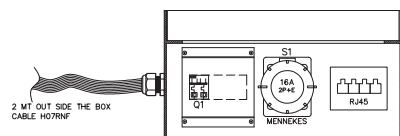
EQUIPEMENT : A



EQUIPEMENT : B



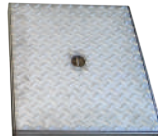
EQUIPEMENT : C





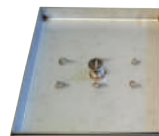
MANHOLE COVERS AVAILABLE

A



STAINLESS
STEEL manhole
cover almond
finish 40KN

B



STAINLESS
STEEL manhole
cover almond
finish to fill
25KN

EQUIPMENT EXAMPLES

A

INDOORS/OUTDOORS

- Nr 1 interlocked socket 5p 32A
- Nr 1 RCBO's
- Nr 4 RJ45 cat.6 sockets
- Nr 1 power cable or terminal block

B

INDOORS/OUTDOORS

- Nr 1 interlocked socket 5p 16A
- Nr 1 RCBO's
- Nr 4 RJ45 cat.6 sockets
- Nr 1 power cable or terminal block

C

INDOORS/OUTDOORS

- Nr 1 interlocked socket 3p 16A
- Nr 1 RCBO's
- Nr 4 RJ45 cat.6 sockets
- Nr 1 power cable or terminal block

TYPE OF MOVEMENT

A

Raised manually by its key until the end of the stroke.

CONNECTION SYSTEM

- H07RN-F power cable (standard 3.00 mt)
- Terminal block

CONTAINMENT PIT

RBK concrete box

External dimensions 500x500mm with height 350mm

Presence of pre-drilling for line entry with a diameter of 120mm

ADDITIONAL EQUIPMENT

- Electricity consumption meters
- Water consumption meters
- Compressed air couplings
- Audio/video connectors
- RJ-data/video/telephone jacks
- Water outlet/ valves $\frac{1}{2}$ " or $\frac{3}{4}$ "







www.vmrsl.com

New VMR s.r.l, Via Lario 31, 22060 Cantù (CO) Italy
Tel. +39 031-704673 Fax +39 031-7090081
info@vmrsl.com