

Rectangular punch



Suitable for

- Mild steel (St37), plastic and aluminium to 3.0 mm and V2A 1.5 mm
- Punching of burr-free openings

Operation

- Manual / hydraulic

Predrilling






- 9.7 mm dia. pilot drill 50360183
- 12.7 mm dia. pilot drill 50344102
- 15.9 mm dia. pilot drill 50344030
- 30.2 mm dia. 50364146

Scope of supply

- Punch unit including punch, die, draw stud, counter nut and ball-bearing nut

Additional information

- * = only for use with hydraulic punch drivers 50159062, 50250973, LS60L and LS50FLEX
- ** = only for use with hydraulic punch drivers 50159062, 50250973 and LS50FLEX

Punch size A x B	Max. Material thickness		Individual parts f. manual operation					Adapter for hydr. punch driver	Mounting hole-dia.	Complete unit
										
mm	mm (St37)	Operating mode	Punch	Die	Draw studs	Ball bearing nut	Counter nut	Part No.	mm	Part No.
11.1 x 22.2	1.5	Hand/hydr.	50600265	50600273	50601156	50601202	50052446	50601148	9.7	50600257
17.0 x 19.0	2.0	Hand/hydr.		50600303	52020113	50347330	50046381	50339672	12.7	50610281
19.1 x 29.0	2.0	Hand/hydr.	50600320	50600338	50601172	50601652	50602586	50601679	15.9	50600311
19.1 x 33.3	2.0	Hand/hydr.	50600354	50600362	50601172	50601652	50602586	50601679	15.9	50600346
21.9 x 25.9	2.0	Hand/hydr.	50600389	50600397	50601172	50601652	50602586	50601679	15.9	50600370
22.0 x 30.0	2.0	Hand/hydr.	50600419	50600427	50601172	50601652	50602586	50601679	15.9	50600400
22.0 x 42.0	2.0	Hand/hydr.	50600451	50600460	50601172	50601652	50602586	50601679	15.9	50600435
25.1 x 29.0	2.0	Hand/hydr.	50600486	50600494	50601172	50601652	50602586	50601679	15.9	50600478
31.8 x 35.1	2.0	Hand/hydr.	50600516	50600524	50601172	50601652	50602586	50601679	15.9	50600508
29.0 x 71.0	3.0	Hydr.			52045298		52045300		28.6	52045296
30.0 x 90.0	3.0	Hydr.			52045298		52045300		28.6	52045297
33.3 x 66.7	3.0	Hydr.	50600540	50600559	50601180		50602357		30.2	50600532
35.0 x 52.0	3.0	Hydr.	50600575	50600583	50601180		50602357		30.2	50600567
35.0 x 65.0	3.0	Hydr.	50600605	50600613	50601180		50602357		30.2	50600591
35.0 x 82.0	2.0	Hydr.*	50600630	50600648	50601180		50602357		30.2	50600621
35.0 x 112.0	2.0	Hydr.*	50600664	50600672	50601180		50602357		30.2	50600656
46.0 x 92.0	3.0	Hydr.*	50600699	50600702	50601180		50602357		30.2	50600680
57.2 x 88.9	3.0	Hydr.*	50600729	50600737	50601180		50602357		30.2	50600710
68.0x138.0	2.0	Hydr.**	50600753	50600761	50601180		50602357		30.2	50600745



Square punch



Suitable for

- Mild steel (St37), plastic and aluminium to 3.0 mm and V2A 1.5 mm
- Punching of burr-free openings

Operation

- Manual / hydraulic

Predrilling



- 9.7 mm dia. pilot drill 50360183
- 12.7 mm dia. pilot drill 50344102
- 15.9 mm dia. pilot drill 50344030
- 30.2 mm dia. 50364146

Scope of supply

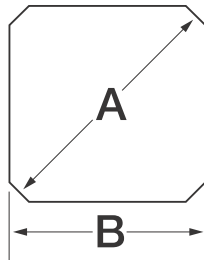
- Punch unit including punch, die, draw stud, counter nut and ball-bearing nut

Additional information

- * = only for use with hydraulic punch drivers 50159062, 50250973, LS60L and LS50FLEX
- ** = only for use with hydraulic punch drivers 50159062 and 50250973

Punch size A x B	Max. Material thickness		Individual parts for manual operation					Adapter for hydr. punch driver	Mounting hole-dia. mm	Complete unit
										
mm	mm (St37)	Operating mode	Punch	Die	Draw studs	Ball bearing nut	Counter nut	Part No.	mm	Part No.
12.7 x 12.7	1.5	Hand/hydr.	50600028	50600036	50601156	50601202	50052446	50601148	9.5	50600010
15.9 x 15.9	2.0	Hand/hydr.			52020113	50347330	50046381	50339672	12.7	50610045
19.1 x 19.1	2.0	Hand/hydr.	50600087	50600095	52020113	50347330	50046381	50339672	12.7	50610076
22.4 x 22.4	2.0	Hand/hydr.			52020113	50347330	50046381	50339672	12.7	50610106
24.0 x 24.0	2.0	Hand/hydr.	50600141	50600150	52020113	50347330	50046381	50339672	12.7	50610137
25.4 x 25.4	2.0	Hand/hydr.	50600176	50600184	50601172	50601652	50602586	50601679	15.9	50600168
45.0 x 45.0	3.0	Hydr.	50767640	50767657	52046100		52046101		30.2	50115723
46.0 x 46.0	3.0	Hydr.		50600214	50601180		50602357		30.2	50600192
50.8 x 50.8	3.0	Hydr.	50601695		50601180		50602357		30.2	50601687
68.0 x 68.0	3.0	Hydr.	52055423	50601733	50601180		50602357		30.2	50601717
92.0 x 92.0	3.0	Hydr.*		50601768	50601180		50602357		30.2	50601741
104.8 x 104.8	2.0	Hydr.*	50601784	50601792	50601180		50602357		30.2	50601776
138.0 x 138.0	2.0	Hydr.**	50600230	50600249	50601180		50602357		30.2	50602349

Special square punch with flattened corners



Suitable for

- Mild steel (St37), plastic and aluminium to 2.0 mm
- Punching of burr-free openings

Operation






- Manual / hydraulic

Predrilling

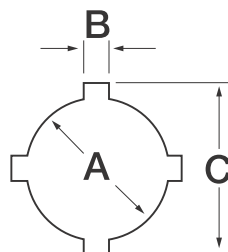
- 12.7 mm dia pilot drill 50344102

Scope of supply

- Punch unit including punch, die, draw stud, counter nut and ball-bearing nut

Punch size A x B	Max. Material thickness		Individual parts for manual operation					Adapter for hydr. punch driver	Mounting hole-dia. mm	Complete unit
										
mm	mm (St37)	Operating mode	Punch	Die	Draw studs	Ball bearing nut	Counter nut	Part No.	mm	Part No.
22.5 x 20.1	2.0	Hand/hydr.	50611264	50601271	52020113	50347330	50046381	50339672	12.7	50611257

Round punch with four anti-rotation tabs



Suitable for

- Mild steel (St37), plastic and aluminium to 3.0 mm

Operation






- Manual / hydraulic

Predrilling

- 15.9 mm dia. pilot drill 50344030

Scope of supply

- Punch unit including punch, die, draw stud, counter nut and ball-bearing nut

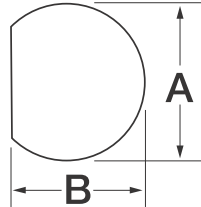
Punch size A x B x C	Max. Material thickness		Individual parts for manual operation					Adapter for hydr. punch driver	Mounting hole-dia. mm	Complete unit
										
mm	mm (St37)	Operating mode	Punch	Die	Draw studs	Ball bearing nut	Counter nut	Part No.	mm	Part No.
22.5 x 3.2 x 25.4	2.0	Hand/hydr.	50602390		50601172	50601652	50602586	50601679	15.9	50602381
30.5 x 4.8 x 36.0	3.0	Hand/hydr.	50602438	50602497	50601172	50601652	50602586	50601679	15.9	50602420



Punching

Round and special shape punches

„D“ shaped punch



Suitable for

- Mild steel (St37), plastic and aluminium to 2.0 mm

Operation

- Manual / hydraulic

Predrilling






- 12.7 dia. mm pilot drill 50344102

Scope of supply

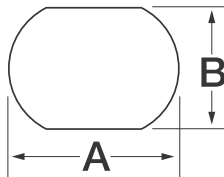
- Punch unit including punch, die, draw stud, counter nut and ball-bearing nut

Additional information

- * 50610809 and 50610830 available only as punch unit

Punch size A x B	Max. Material thickness		Individual parts for manual operation					Adapter for hydr. punch driver	Mounting hole-dia. mm	Complete unit
										
mm	mm (St37)	Operating mode	Punch	Die	Draw studs	Ball bearing nut	Counter nut	Part No.	mm	Part No.
12.7 x 11.9	2.0	Hand/hydr.	50600788	51600790	50601156	50601202	50052446	50601148	9.5	50600770
15.9 x 15.1	2.0	Hand/hydr.			50344218	50347330	50046381	50339672	12.7	50610809
19.1 x 17.9	2.0	Hand/hydr.			50344218	50347330	50046381	50339672	12.7	50610830

Double „D“ shaped punch



Suitable for

- Mild steel (St37), plastic and aluminium to 2.0 mm

Operation

- Manual / hydraulic

Predrilling



- 15.9 mm dia. pilot drill 50344030

Scope of supply

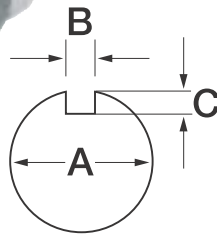
- Punch unit including punch, die, draw stud, counter nut and ball-bearing nut

Additional information

- All punches available only as punch unit

Punch size A x B	Max. Material thickness		Individual parts for manual operation					Adapter for hydr. punch driver	Mounting hole-dia. mm	Complete unit
										
mm	mm (St37)	Operating mode	Punch	Die	Draw studs	Ball bearing nut	Counter nut	Part No.	mm	Part No.
19.5 x 16.3	2.0	Hand/hydr.			52020113	50347330	50046381	50339672	12.7	50610861
20.2 x 17.6	2.0	Hand/hydr.			52020113	50347330	50046381	50339672	12.7	50610892
23.2 x 19.2	2.0	Hand/hydr.			52020113	50347330	50046381	50339672	12.7	50610922
23.2 x 20.2	2.0	Hand/hydr.			52020113	50347330	50046381	50339672	12.7	50610953
34.9 x 28.6	2.0	Hand/hydr.			50601660	50601652	50602586	50601679	23.8	50600982

Keyway punch



Suitable for

- Mild steel (St37), plastic and aluminium to 2.0 mm

Operation







- Manual / hydraulic

Predrilling

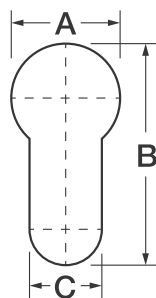
- 23.8 mm dia. pilot drill 50300083

Scope of supply

- Punch unit including punch, die, draw stud, counter nut and ball-bearing nut

Punch size A x B x C	Max. Material thickness		Individual parts for manual operation					Adapter for hydr. punch driver	Mounting hole-dia. mm	Complete unit
										
mm	mm (St37)	Operating mode	Punch	Die	Draw studs	Ball bearing nut	Counter nut	Part No.	mm	Part No.
12.2 x 1.4 x 0.8	1.5	Hand/hydr.	51601020	51601030	50601156	50601202	50052446	50601148	9.5	50601016
29.7 x 3.1 x 2.5	2.0	Hand/hydr.	51601050	51601060	50601660	50601652	50602586	50601679	23.8	50601040
32.1 x 4.0 x 2.5	2.0	Hand/hydr.	51601080	51601090	50601660	50601652	50602586	50601679	23.8	50601075
33.7 x 2.6 x 2.5	2.0	Hand/hydr.	51601110	50601121	50601660	50601652	50602586	50601679	23.8	50601105

Profile cylinder punch



Suitable for

- Mild steel (St37) up to 2.0 mm and aluminium up to 3.5 mm thick

Operation


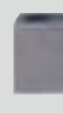



- Manual / hydraulic

Predrilling

- 12.7 mm dia. pilot drill 50344102

Scope of supply

- Punch unit including punch, die, draw stud, counter nut and ball-bearing nut

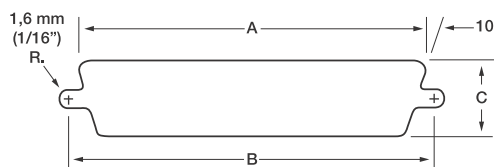
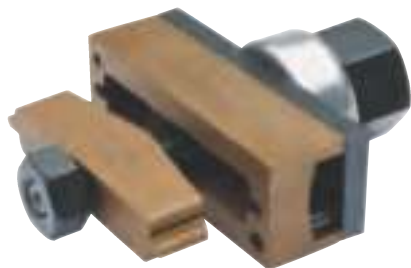
Punch size A x B x C	Max. Material thickness		Individual parts for manual operation						Adapter for hydr. punch driver	Mounting hole-dia. mm	Complete unit
											
mm	mm (St37)	Operating mode	Punch	Die	Draw studs	Ball bearing nut	Counter nut	Spacer bushing	Part No.	mm	Part No.
17.0 x 33.3 x 10.5	2.0	Hand/hydr.	50053027	50053035	50053043	50347330	90500113	50053051	50339672	12.7	50053078



Punching

Round and special shape punches

Sub-Min „D“ punch



Suitable for

- Mild steel (St37) up to 2.0 mm and aluminium up to 3.5 mm thick
- Front or rear mounting

Operation




- Manual / hydraulic

Predrilling

- 12.7 mm dia. pilot drill 50344102

Scope of supply

- Punch unit including punch, die, draw stud, counter nut and ball-bearing nut

Standard	Number Pole		Dimension			Individual parts for manual operation			Adapter for hydr. punch driver	Complete unit
										
		Operating mode	A mm	B mm	C mm	Draw studs	Ball bearing nut	Counter nut	Part No.	Part No.
229	9	Hand/hydr.	20.0	24.9	11.9	52020113	50347330	50046381	50339672	50344366
231	15	Hand/hydr.	28.6	33.3	11.9	52020113	50347330	50046381	50339672	50344374
RS232	25	Hand/hydr.	42.0	47.1	11.9	52020113	50347330	50046381	50339672	50344200
234	37	Hand/hydr.	58.3	63.4	11.9	52020113	50347330	50046381	50339672	50344293
238	50	Hand/hydr.	55.9	61.0	14.7	52020113	50347330	50046381	50339672	50344447

Special shape punch for heavy duty connectors with 4 centre mark points



Characteristics

- Rectangular punches for heavy duty connectors feature a drilling jig built into the die, for drilling the 4 locating holes.

Suitable for

- Mild steel (St37) to 3.0 mm thick and aluminium to 3.5 mm

Operation




- Hydraulic

Predrilling

- 30.2 mm dia. pilot drill 50364146

Scope of supply

- Punch unit including punch, die, draw stud and counter nut

	Punch size A x B	Max. Material thickness		Individual parts for manual operation		Mounting hole-dia.	Complete unit
							
Item	mm	mm	Operating mode	Draw studs	Counter nut	mm	Part No.
Special shaped punch for heavy duty connectors, 6-pin, 36 x 52 mm	36.0 x 52.0	3.0	Hydraulic	52046100	52046101	30.2	52033816
Special shaped punch for heavy duty connectors, 10-pin, 36 x 65 mm	36.0 x 65.0	3.0	Hydraulic	52046100	52046101	30.2	52033817
Special shaped punch for heavy duty connectors, 16-pin, 36 x 86 mm	36.0 x 86.0	3.0	Hydraulic	52046100	52046101	30.2	52033818
Special shaped punch for heavy duty connectors, 24-pin, 36 x 91 mm	36.0 x 91.0	3.0	Hydraulic	52046100	52046101	30.2	52033819
Special shaped punch for heavy duty connectors 36 x 112 mm	36.0 x 112.0	3.0	Hydraulic	52046100	52046101	30.2	52033820
Special shaped punch for heavy duty connectors 46 x 86 mm	46.0 x 86.0	3.0	Hydraulic	52046100	52046101	30.2	52033831
Special shaped punch for heavy duty connectors 46 x 112 mm	46.0 x 112.0	3.0	Hydraulic	52046100	52046101	30.2	52033832
Special shaped punch HAN Yellock® 30 with 4 centre mark points 47.2 x 56.4 mm	47.2 x 56.4	3.0 / 3.0 VA	Hydraulic	52046100	52046101	30.2	52058591
Special shaped punch HAN Yellock® 30 with 4 centre mark points 47.2 x 85.5 mm	47.2 x 85.5	3.0 / 3.0 VA	Hydraulic	52046100	52046101	30.2	52058592

A PRACTICAL TIP!

Spirit level or depth gauge not to hand?
Simply mark the position for punching
in the shape of a cross and use the
markings of the special-shaped punch
for a perfect punching result.