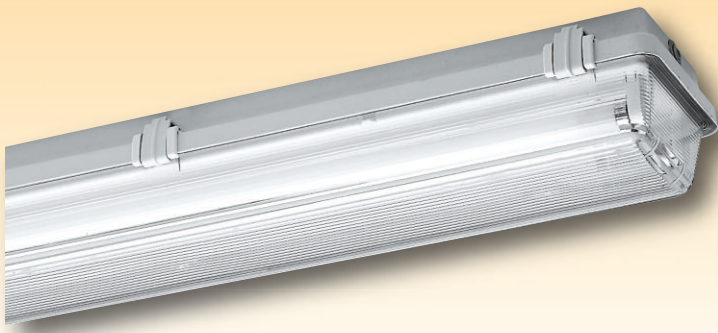
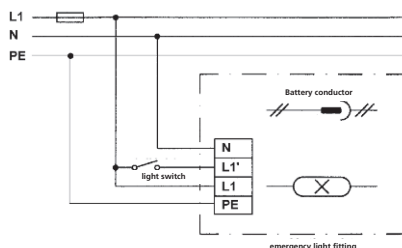


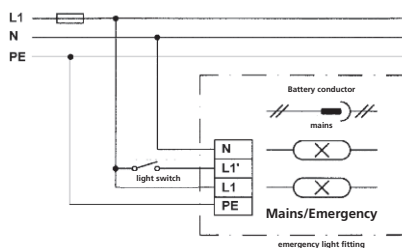
Damp Room Emergency Light Fittings Series 161/162...



Wiring diagram 161... maintained operation



Wiring diagram 162... maintained operation



Starting: Connect battery conductor

Out of operation: Disconnect battery conductor

Stand-by operation: Do not connect L1'

Application:

For illumination of working places and for illuminating and identifying escape routes etc.

Mechanical Design:

Housing: Glass fibre reinforced polyester resin, foamed polyurethane gasket.

Diffuser: Injected clear acrylic glass with internal prisms.

Closure: Three-part captive plastic clips (KK).

Reflector: White sheet steel hinged, carrying the electrical components.

Connection: 4-pole plug-in terminal.

Cable entry: 2 plugs M20.

Through wiring system: Up to 5x2,5mm² (extra charge).

Mounting system: „Closed“ knock-outs for direct ceiling mounting. Sealing and pressure disks inside each fitting.

Technical Data:

Incorporated NiCd battery set which is constantly charged and therefore ready for operation any time.

Visual monitoring the battery charging process through LED.

Electronic deep discharge protection.

Re-charging time: 24 hours acc. to EN 60598-2-22.

.../MA automatic monitoring the emergency light fitting according to EN 62034, indication of the test results by 2-coloured LED at the luminaire.

Modes of operation:

Maintained operation = in case of mains failure 1 lamp is switched over to battery operation. In the 2-lamp version (type 162...) only one lamp will be operating as emergency lighting.

Connection voltage: 230V, 50Hz (standard)

Admissible Ambient temperatures:

-5°C up to +30°C (maintained version), -5°C up to +40°C (stand-by version)

Options:

- insulation class II with self contained battery
- polycarbonate diffuser (PC)
- stainless steel clips (KE)
- one-sided stainless steel hinge (SC)
- **Special design for wind power installations**



for series 161/162... with self-contained battery and EVG:

- .../MA automatic monitoring the emergency light fitting according to EN 62034, indication of the test results by 2-coloured LED (luminescence diode) at the luminaire.
- .../DALI emergency unit with DALI-interface for central monitoring of single fittings

for version 161/162... in case of connection to central power supply unit:

- with separate module for monitoring individual light fittings connected to group- or central battery systems. We recommend Central Battery Systems from INOTEC.
- with electronic ballast for voltages: 110V AC/DC, 24V DC

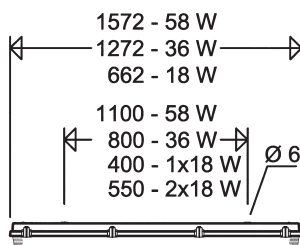
for series 161/162... with self-contained battery:

- .../B stand-by system = emergency lighting in case of mains failure only (series 162... with 1 lamp = 162 1.. only)
- .../P button for testing the emergency light function
- 3h emergency operation time

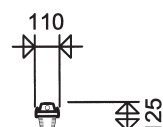
Further equipment please see catalogue section „Dustproof/Waterproof Luminaires“ 161/162....

SCHUCH quality - your advantage:

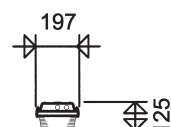
- high grade, robust, chemically resistant light fitting of an excellent quality; especially suitable for its application at a rough industrial environment:
 - impact resistant up to 16g
 - housing made from glass fibre reinforced polyester resin of a high impact resistance (wall thickness: 2mm); outstanding chemical- and UV-resistance.
 - housing with 3 mounting points, especially suited for areas with a risk of shocks and vibrations e.g. power plants, boiler- or turbine rooms
 - injected PMMA diffuser of a high mechanical stability (quadruple safety due to impact resisting component. Wall thickness: 1,9mm). Excellent chemical resistance.
 - alternative: injected PC diffuser of a very high impact resistance (16 Nm) even at a high continuous temperature
- best suitable for easy mounting and maintenance purpose with a high security of continuous operation:
 - tiltable cover allows a quick and easy lamp replacement without any tools
 - captive clips consisting of several components made from high grade POM (standard) or stainless steel in case of aggressive ambient conditions (also available with hinges)
 - cost-efficient loop-in/loop-out facility
- ready for operation at any time due to permanent conservation charging
- optical indication via LED
- electronic deep discharge protection



161...



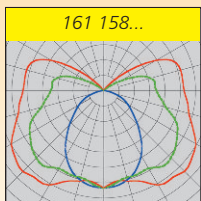
162...



161/162.../I/..



with self-contained battery



Type	Article no.	Lamps/ W	Flux factor about % ²⁾	Weight about kg ³⁾
with conventional ballast, 1 h operation time ¹⁾				
161 136/I/18/1	16110 0509	1 x T 26/36 W	18	4,1
161 136/I/34/1	16110 0525	1 x T 26/36 W	34	4,4
161 158/I/15/1	16110 0510	1 x T 26/58 W	15	4,6
161 158/I/22/1	16110 0526	1 x T 26/58 W	22	4,9
162 218/I/25/1	16210 0548	2 x T 26/18 W	25	3,3
162 218/I/65/1	16210 0583	2 x T 26/18 W	65	3,7
162 236/I/18/1	16210 0551	2 x T 26/36 W	18	5,3
162 236/I/34/1	16210 0584	2 x T 26/36 W	34	7,0
162 236/I/50/1	16210 0686	2 x T 26/36 W	50	7,7
162 258/I/15/1	16210 0554	2 x T 26/58 W	15	7,2
162 258/I/22/1	16210 0586	2 x T 26/58 W	22	7,5
162 258/I/30/1	16210 0688	2 x T 26/58 W	30	7,7

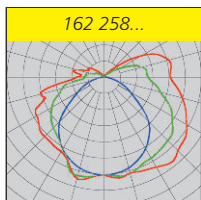
1) 3h emergency operation on demand
2) Ratio effective lamp flux/nominal flux

3) Weights without packing material

161/162.../I/... EVG



with self-contained battery



Type	Article no.	Lamps/ W	Flux factor about % ²⁾	Weight about kg ⁴⁾
1 h operation time ¹⁾, with electronic ballast (EVG)				
161 136/I/18/1 EVG ³⁾	16110 0517	1 x T 26/36 W	18	3,5
161 136/I/34/1 EVG	16110 0527	1 x T 26/36 W	34	3,8
161 158/I/15/1 EVG ³⁾	16110 0518	1 x T 26/58 W	15	3,9
161 158/I/22/1 EVG	16110 0528	1 x T 26/58 W	22	4,2
162 218/I/25/1 EVG ³⁾	16210 0595	2 x T 26/18 W	25	3,0
162 218/I/65/1 EVG	16210 0582	2 x T 26/18 W	65	3,3
162 236/I/18/1 EVG ³⁾	16210 0562	2 x T 26/36 W	18	4,8
162 236/I/34/1 EVG	16210 0578	2 x T 26/36 W	34	5,6
162 236/I/50/1 EVG	16210 0680	2 x T 26/36 W	50	5,3
162 258/I/15/1 EVG ³⁾	16210 0563	2 x T 26/58 W	15	5,6
162 258/I/22/1 EVG	16210 0580	2 x T 26/58 W	22	5,8
162 258/I/30/1 EVG	16210 0682	2 x T 26/58 W	30	6,1

1) 3h emergency operation on demand
2) Ratio effective lamp flux/nominal flux

3) ...MA version possible
4) Weights without packing material

Note:

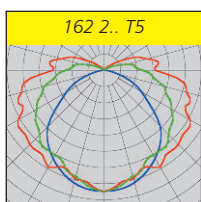
Depending on the length of the fluorescent lamps different types of fluorescent lamps are available:

- HE high light efficiency (14, 28, 35 W)
- HO high output (24, 54, 49, 80W)
- Amalgam lamps with an almost constant luminous flux from 5°C up to 70°C (24, 54, 80W)
- long-life lamps of a 60,000 h life period (manufacturer instruction)

161/162... (T5)



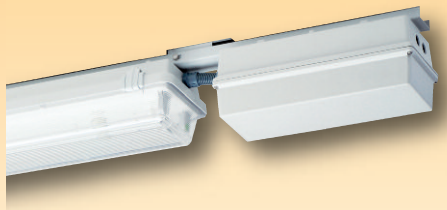
for fluorescent tubes T5 (Ø 16mm)



Type	Article no.	Lamps/ W	Flux factor about %	Weight about kg ⁴⁾
1 h operation time ¹⁾				
161 128/28/1 MA	16110 0132	1 x T16/28 W	28	4,0
161 135/35/1 MA	16110 0130	1 x T16/35 W	35	4,4
161 149/20/1 MA	16110 0131	1 x T16/49 W	20	4,4
162 154/22/1 MA	16210 0188	1 x T16/54 W	22	5,2
162 180/15/1 MA	16210 0189	1 x T16/80 W	15	6,1
162 214/25/1 MA	16210 0190	2 x T16/14 W	25	3,1
162 224/12/1 MA	16210 0191	2 x T16/24 W	12	3,1
162 228/40/1 MA	16210 0192	2 x T16/28 W	40	5,3
162 235/35/1 MA	16210 0193	2 x T16/35 W	35	6,2
162 249/20/1 MA	16210 0194	2 x T16/49 W	20	6,2

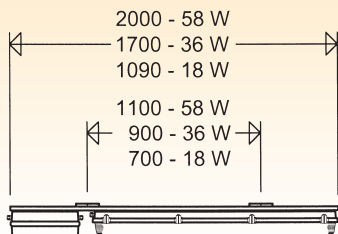
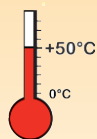
1) 3h emergency operation on demand
2) Ratio effective lamp flux/nominal flux

3) Weights without packing material



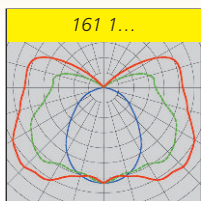
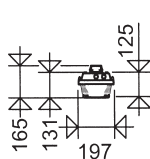
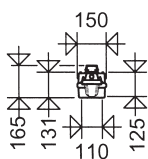
161/162... H50

for high ambient temperatures up to +50°C, with self-contained battery



Series 161...

Series 162...



Type 162 218... with legend .../35

Self adhesive legends



.../33 W

.../34 W

.../35 W

for escape route identification acc. to DIN EN ISO 7010 and ASR A1.3. Viewing distance = 25m.

Applications:

Power stations, garbage incineration plants, recycling plants, chemical industries etc. as emergency and safety illumination and for illuminating and identifying escape routes.

Mechanical Design:

As standard emergency light fitting

161/162... but:

Reflector: Glass fibre reinforced polyester, can be suspended or removed and carries the electrical components, protected against accidental contact.

Emergency light components installed in a separate glass fibre reinforced polyester box (BR 10150) which is mounted to a carrier rail together with the light fitting as one unit.

Connection: 6-pole terminal for one-sided loop-in/loop-out wiring with 2 plastic cable glands M20 x 1,5

Mounting: Direct ceiling mount or rope/chain mount with eye bolts or hooks.

Admissible Ambient temperatures: -5°C up to +50 (maintained operation)

Type	Article no.	Lamps Watts	Flux factor approx. % ¹⁾	Weight approx. kg ²⁾
1 h operation time, with conventional ballasts ¹⁾				
161 136/I/18/1 H50	16116 0011	1 x T 26/36 W	18	6,6
161 158/I/15/1 H50	16116 0012	1 x T 26/58 W	15	9,1
162 218/I/25/1 H50	16217 0011	2 x T 26/18 W	25	6,7
162 236/I/18/1 H50	16217 0012	2 x T 26/36 W	18	9,4
162 258/I/15/1 H50	16217 0013	2 x T 26/58 W	15	12,1
3 h operation time, with conventional ballasts ¹⁾				
161 136/I/10/3 H50	16116 0013	1 x T 26/36 W	10	6,6
161 158/I/07/3 H50	16116 0014	1 x T 26/58 W	7	9,1
162 218/I/12/3 H50	16217 0014	2 x T 26/18 W	12	6,7
162 236/I/10/3 H50	16217 0015	2 x T 26/36 W	10	9,4
162 258/I/07/3 H50	16217 0016	2 x T 26/58 W	7	12,1

1) Ratio effective lamp flux/nominal flux
2) Weights without packing material

161/162... ZB

for connection to central power supply unit



Application:

For connection to group or central battery systems or to an emergency mains

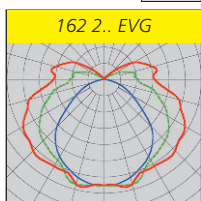
for illuminating escape routes. We recommend Central Battery Systems from INOTEC.

Technical Data:

ECG: For operation on 230V AC and 220V DC. Fitting with incorporated fuse for cutting off in case of failure according to DIN EN 60598-2-22, VDE 0711-2-22, section 22.6.3.

2-lamp version: 2 ECG, separate lamp circuits, separate connection terminal, additional cable entry.

Insulation class: II



Type	Article no.	Lamps/W	Weight about kg ¹⁾
161 118 ZB	16110 0032	1 x T 26/18 W	1,5
161 136 ZB	16110 0033	1 x T 26/36 W	2,4
161 158 ZB	16110 0034	1 x T 26/58 W	3,0
with 2 individual electronic ballasts (/2E)			
162 218/2E ZB	16210 0095	2 x T 26/18 W	2,1
162 236/2E ZB	16210 0096	2 x T 26/36 W	2,5
162 258/2E ZB	16210 0097	2 x T 26/58 W	4,0

1) Weights without packing material

Accessories / Spare Parts

Type	Article no.	
Self adhesive legends for series 162 118 and 162 218		
590/125/33 W	59000 0004	Emergency exit to the left
590/125/34 W	59000 0005	Emergency exit to the right
590/125/35 W	59000 0006	Emergency exit below

For further accessories and spare parts please see catalogue section „Damp room light fittings“

Series 161/162...

When ordering any electronic components or battery sets please do always indicate the type nos. of the light fittings.