

EXPLOSION GROUP IIB + H₂

EJB.. Series enclosures - Aluminium



EJB.. series enclosures offers Ex-d IIB or IIB+H₂ mode of protection. They are suitable for hazardous areas of industrial plants for indoor and outdoor applications

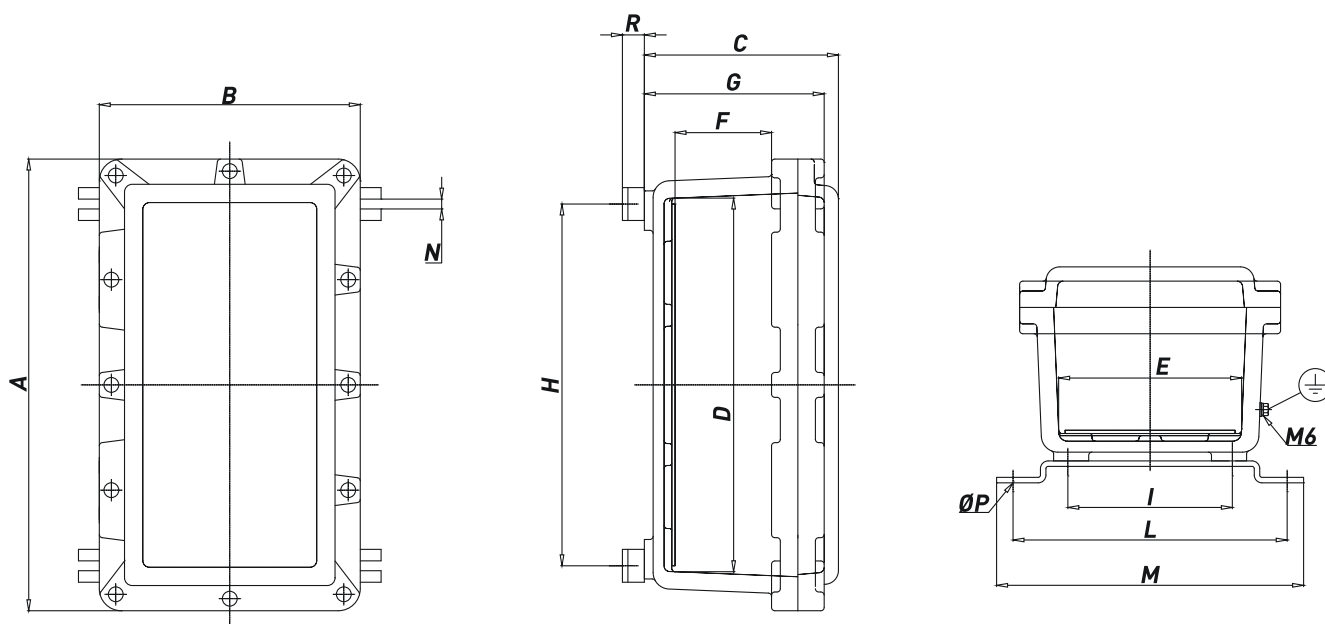
They can be equipped with following components:

- Push buttons and mechanical operators PL.. Series;
- Rotating switches PSRC Series;
- Signalling lamps PL.. Series;
- Potentiometers;
- Rotating handles SRC-1 or SRC-10;
- Measurement instruments;
- Electric and electronic equipment;
- Windows made of tempered glass.

TECHNICAL FEATURES

| | |
|---|--|
| Material | Aluminium with low content of copper |
| IP rating | IP65, IP66, IP67 with flanged joint coated with silicone grease |
| Ambient temperature range | -50°C to +55°C -20°C to +55°C (IECEX Certificate) |
| Approvals | INERIS 00ATEX0021X GOST R IECEX INE 10.0015X |
| Marking | II 2 GD Ex-d IIB T(**) Gb or Ex-d IIB+H ₂ T(**) Gb Ex-tb IIIC T(**) Db IP65 or 66 or 67 ** T6/T85°C, T5/T100°C, T4/T135°C, T3/T200°C II 2(1) GD Ex-d [ia Ga] IIB T6 Gb or Ex-d [ia Ga] IIB+H ₂ T6 Gb Ex-tb [ia Da] IIIC T85°C Db IP65 or 66 or 67 II 2(2) GD Ex-d [ib] IIB T6 Gb or Ex-d [ib] IIB+H ₂ T6 Gb Ex-tb [ib] IIIC T85°C Db IP65 or 66 or 67 NOTE: under IEC Ex directive, enclosures are suitable for IIB group of gases/dusts only |
| Surface treatment | Green colour polyurethane painting cycle RAL6003 (other colour available upon request) |
| Entries | Metric pitch 1.5, ANSI B1.20.1 NPT, UNI-6125 |
| Hardware and screws | AISI316 Stainless steel external screws |
| Standard certificate label | Made by self adhesive UV and corrosion resistant polyester, approved by INERIS Laboratory. |
| Accessories available upon request | Mounting brackets Drain/breather valve Hinges Door handle Internal anticondensate painting Traffolyte/Stainless steel certificate label |

Dimensions EJB Aluminium



EJB.. Series enclosures c/w internal mounting plate - ALUMINIUM

| TYPE | DIMENSIONS | | | | | | | | | | | | | | WEIGHT [KG] | AA** ATEX | AA** IECEx | EE |
|---------|------------|-----|-----|-----|-----|-----|-----|-----|-----|-----|-----|----|-----|----|-------------|-----------|------------|-----------|
| | A | B | C | D | E | F | G | H | I | L | M | N | ØP | R | | | | |
| EJB-2 | 298 | 238 | 174 | 230 | 168 | 95 | 135 | 205 | 140 | 250 | 280 | 9 | M6 | 20 | 10.07 | 12 | 8 | 160 X 220 |
| EJB-3 | 412 | 238 | 177 | 340 | 167 | 85 | 136 | 330 | 150 | 250 | 280 | 9 | M8 | 20 | 13.40 | 18 | 10 | 155 X 330 |
| EJB-3A | 412 | 238 | 199 | 340 | 167 | 85 | 158 | 330 | 150 | 250 | 280 | 9 | M8 | 20 | 13.50 | 9 | 8 | 155 X 330 |
| EJB-4 | 418 | 302 | 175 | 335 | 220 | 90 | 132 | 300 | 190 | 300 | 320 | 9 | M8 | 20 | 17.50 | 20 | 12 | 210 X 325 |
| EJB-5 | 480 | 300 | 232 | 392 | 209 | 125 | 182 | 350 | 185 | 300 | 320 | 9 | M8 | 20 | 20.50 | 22 | 14 | 200 X 385 |
| EJB-6 | 483 | 408 | 238 | 387 | 310 | 130 | 186 | 355 | 280 | 390 | 420 | 9 | M8 | 20 | 33.00 | 28 | 16 | 300 X 380 |
| EJB-8 | 634 | 365 | 254 | 530 | 262 | 140 | 204 | 495 | 225 | 340 | 370 | 9 | M8 | 20 | 36.05 | 36 | - | 250 X 520 |
| EJB-9 | 535 | 468 | 257 | 426 | 363 | 140 | 204 | 410 | 340 | 440 | 470 | 12 | M10 | 20 | 40.00 | 34 | 18 | 350 X 420 |
| EJB-10 | 750 | 366 | 292 | 630 | 250 | 185 | 234 | 580 | 205 | 330 | 360 | 12 | M10 | 20 | 48.50 | 34 | - | 240 X 620 |
| EJB-11 | 596 | 505 | 267 | 483 | 394 | 130 | 204 | 445 | 360 | 480 | 510 | 12 | M10 | 20 | 53.30 | 44 | 20 | 380 X 470 |
| EJB-12 | 805 | 455 | 310 | 690 | 335 | 170 | 243 | 640 | 285 | 425 | 450 | 14 | M12 | 20 | 73.00 | 54 | 24 | 325 X 625 |
| EJB-13 | 832 | 607 | 314 | 723 | 500 | 115 | 236 | 630 | 405 | 580 | 620 | 14 | M12 | 20 | 106.00 | 76 | 28 | 463 X 683 |
| EJB-13A | 832 | 607 | 400 | 723 | 500 | 205 | 322 | 630 | 405 | 580 | 620 | 14 | M12 | 20 | 124.00 | 76 | 28 | 463 X 683 |

For complete junction boxes is necessary to ask to the Sales Office.
Maximum quantity of M32x1,5 operators on door.

Maximum number of entries on sides A/B under ATEX directive

| TYPE | EJB-2 | EJB-3 | EJB-3A | EJB-4 | EJB-5 | EJB-6 | EJB-8 | EJB-9 | EJB-10 | EJB-11 | EJB-12 | EJB-13 | EJB-13A |
|--------------|-------|-------|--------|-------|-------|-------|-------|-------|--------|--------|--------|--------|---------|
| M20 / 1/2" | 9/7 | 14/7 | 14/7 | 14/9 | 27/13 | 24/18 | 35/16 | 27/24 | 57/21 | 32/27 | 61/28 | 48/32 | 81/54 |
| M25 / 3/4" | 9/5 | 7/3 | 7/3 | 7/4 | 14/7 | 14/10 | 29/13 | 24/18 | 46/18 | 21/27 | 40/18 | 27/18 | 54/36 |
| M32 / 1" | 4/3 | 6/3 | 6/3 | 6/4 | 12/5 | 12/9 | 18/8 | 12/10 | 29/10 | 14/12 | 32/16 | 23/16 | 35/24 |
| M50 / 1" 1/2 | 3/2 | 4/2 | 4/2 | 4/3 | 5/2 | 5/4 | 7/3 | 9/9 | 14/5 | 6/5 | 16/7 | 9/6 | 18/10 |
| M63 / 2" | 2/1 | 3/1 | 3/1 | 3/2 | 4/2 | 4/3 | 6/2 | 4/4 | 12/4 | 5/4 | 12/5 | 8/5 | 14/9 |
| M75 / 2" 1/2 | - | - | - | - | 3/1 | 3/2 | 4/2 | 3/3 | 5/2 | 4/3 | 6/3 | 6/4 | 6/4 |
| M80 / 3" | - | - | - | - | 2/1 | 2/2 | 3/1 | 2/2 | 4/1 | 3/2 | 4/2 | 5/3 | 5/3 |

Maximum number of entries on sides A/B under IECEx directive

| TYPE | EJB-2 | EJB-3 | EJB-3A | EJB-4 | EJB-5 | EJB-6 | EJB-8 | EJB-9 | EJB-10 | EJB-11 | EJB-12 | EJB-13 | EJB-13A |
|--------------|-------|-------|--------|-------|-------|-------|-------|-------|--------|--------|--------|--------|---------|
| M20 / 1/2" | 5/4 | 8/4 | 8/4 | 11/8 | 11/8 | 24/18 | - | 14/10 | - | 15/11 | 18/12 | 15/12 | 20/14 |
| M25 / 3/4" | 5/3 | 8/3 | 8/3 | 11/6 | 11/7 | 14/10 | - | 14/8 | - | 15/9 | 18/10 | 15/10 | 20/12 |
| M32 / 1" | 4/2 | 6/2 | 6/2 | 6/4 | 7/5 | 12/9 | - | 6/8 | - | 8/6 | 9/7 | 8/7 | 12/8 |
| M50 / 1" 1/2 | 2/1 | 3/1 | 3/1 | 4/3 | 4/3 | 5/4 | - | 6/3 | - | 6/4 | 8/5 | 5/3 | 9/6 |
| M63 / 2" | 1/1 | 2/1 | 2/1 | 3/2 | 3/2 | 4/3 | - | 3/2 | - | 4/3 | 8/3 | 5/2 | 8/5 |
| M75 / 2" 1/2 | - | - | - | - | - | - | - | 1/1 | - | 2/1 | 3/2 | 3/2 | 4/3 |
| M80 / 3" | - | - | - | - | - | - | - | - | - | 1/1 | 2/1 | 2/1 | 3/2 |

EXPLOSION GROUP IIB + H₂

EJB.. Series enclosures - Stainless steel AISI316L



EJB.. series enclosures offers Ex-d IIB or IIB+H₂ mode of protection. They are suitable for hazardous areas of industrial plants for indoor and outdoor applications. They can be equipped with following components:

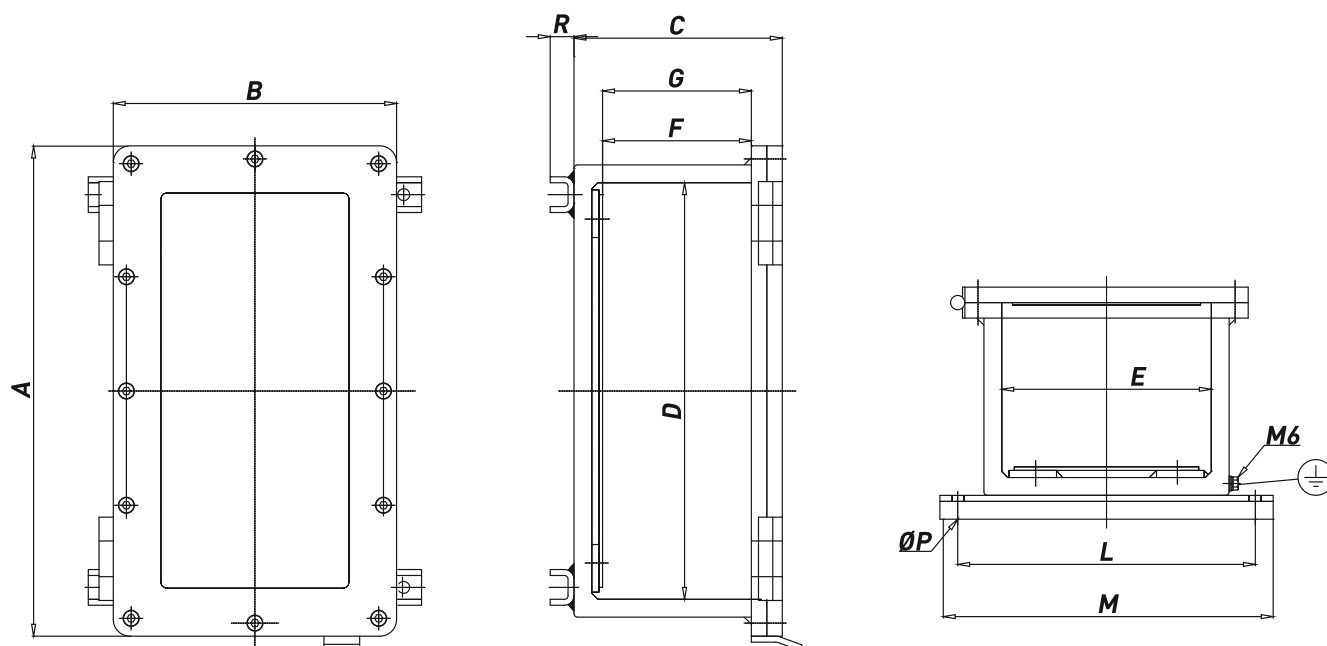
- Push buttons and mechanical operators PL.. Series;
- Rotating switches PSRC Series;
- Signalling lamps PL.. Series;
- Potentiometers;
- Rotating handles SRC-1 or SRC-10;
- Measurement instruments;
- Electric and electronic equipment;
- Windows made of tempered glass.

They can be used in different applications such as push button stations, instrument housing, lighting distribution panels, power distribution panels, heat tracing panels, motor protection, etc.

TECHNICAL FEATURES

| | |
|---|---|
| Material | Stainless steel AISI316L |
| IP rating | IP65, IP66, IP67 with flanged joint coated with silicone grease |
| Ambient temperature range | -50°C to +55°C -20°C to +55°C (IECEX Certificate) |
| Approvals | INERIS 00ATEX0021X GOST R IECEX INE 10.0015X |
| Marking | II 2 GD Ex-d IIB T(**) Gbor Ex-d IIB+H ₂ T(**) Gb Ex-tb IIIC T(**) Db IP65 or 66 or 67 ** T6/T85°C, T5/T100°C, T4/T135°C, T3/T200°C II 2(1) GD Ex-d [ia Ga] IIB T6 Gb or Ex-d [ia Ga] IIB+H ₂ T6 Gb Ex-tb [ia Da] IIIC T85°C Db IP65 or 66 or 67 II 2(2) GD Ex-d [ib] IIB T6 Gb or Ex-d [ib] IIB+H ₂ T6 Gb Ex-tb [ib] IIIC T85°C Db IP65 or 66 or 67 NOTE: under IEC Ex directive, enclosures are suitable for IIB group of gases/dusts only |
| Surface treatment | Unpainted |
| Entries | Metric pitch 1.5, ANSI B1.20.1 NPT, UNI-6125 |
| Hardware and screws | AISI316 Stainless steel external screws |
| Standard certificate label | Made by self adhesive UV and corrosion resistant polyester, approved by INERIS Laboratory. |
| Accessories available upon request | Drain/breather valve Door handle External polyurethane painting cycle Internal anticondensate painting Traffolyte/Stainless steel certificate label |

Dimensions EJB Stainless steel



EJB.. Series enclosures c/w internal mounting plate, mounting brackets, hinges - AISI316L

| TYPE | DIMENSIONS | | | | | | | | | | | | | | WEIGHT [KG] | AA** ATEX | AA** IECEx | EE |
|---------|------------|-----|-----|-----|-----|-----|-----|-----|-----|-----|-----|----|-----|----|-------------|-----------|------------|-----------|
| | A | B | C | D | E | F | G | H | I | L | M | N | ØP | R | | | | |
| EJB-2 | 298 | 238 | 174 | 230 | 168 | 95 | 135 | 205 | 140 | 250 | 280 | 9 | M6 | 20 | 35 | 12 | 8 | 160 X 220 |
| EJB-3 | 412 | 238 | 177 | 340 | 167 | 85 | 136 | 330 | 150 | 250 | 280 | 9 | M8 | 20 | 45 | 18 | 10 | 155 X 330 |
| EJB-4 | 418 | 302 | 175 | 335 | 220 | 90 | 132 | 300 | 190 | 300 | 320 | 9 | M8 | 20 | 56 | 20 | 12 | 210 X 325 |
| EJB-5 | 480 | 300 | 232 | 392 | 209 | 125 | 182 | 350 | 185 | 300 | 320 | 9 | M8 | 20 | 70 | 22 | 14 | 200 X 385 |
| EJB-6 | 483 | 408 | 238 | 387 | 310 | 130 | 186 | 355 | 280 | 390 | 420 | 9 | M8 | 20 | 62 | 28 | 16 | 300 X 380 |
| EJB-8 | 634 | 365 | 254 | 530 | 262 | 140 | 204 | 495 | 225 | 340 | 370 | 9 | M8 | 20 | 114 | 36 | - | 250 X 520 |
| EJB-9 | 535 | 468 | 257 | 426 | 363 | 140 | 204 | 410 | 340 | 440 | 470 | 12 | M10 | 20 | 118 | 34 | 18 | 350 X 420 |
| EJB-11 | 596 | 505 | 267 | 483 | 394 | 130 | 204 | 445 | 360 | 480 | 510 | 12 | M10 | 20 | 139 | 44 | 20 | 380 X 470 |
| EJB-12 | 805 | 455 | 310 | 690 | 335 | 170 | 243 | 640 | 285 | 425 | 450 | 14 | M12 | 20 | 181 | 54 | 24 | 325 X 625 |
| EJB-13 | 832 | 607 | 314 | 723 | 500 | 115 | 236 | 630 | 405 | 580 | 620 | 14 | M12 | 20 | 235 | 76 | 28 | 463 X 683 |
| EJB-13A | 832 | 607 | 400 | 723 | 500 | 205 | 322 | 630 | 405 | 580 | 620 | 14 | M12 | 20 | 261 | 76 | 28 | 463 X 683 |

For complete junction boxes is necessary to ask to the Sales Office.
Maximum quantity of M32x1,5 operators on door.

Maximum number of entries on sides A/B under ATEX directive

| TYPE | EJB-2 | EJB-3 | EJB-4 | EJB-5 | EJB-6 | EJB-8 | EJB-9 | EJB-11 | EJB-12 | EJB-13 | EJB-13A |
|--------------|-------|-------|-------|-------|-------|-------|-------|--------|--------|--------|---------|
| M20 / 1/2" | 9/7 | 14/7 | 14/9 | 27/13 | 24/18 | 35/16 | 27/24 | 32/27 | 61/28 | 48/32 | 81/54 |
| M25 / 3/4" | 9/5 | 7/3 | 7/4 | 14/7 | 14/10 | 29/13 | 24/18 | 21/27 | 40/18 | 27/18 | 54/36 |
| M32 / 1" | 4/3 | 6/3 | 6/4 | 12/5 | 12/9 | 18/8 | 12/10 | 14/12 | 32/16 | 23/16 | 35/24 |
| M50 / 1" 1/2 | 3/2 | 4/2 | 4/3 | 5/2 | 5/4 | 7/3 | 9/9 | 6/5 | 16/7 | 9/6 | 18/10 |
| M63 / 2" | 2/1 | 3/1 | 3/2 | 4/2 | 4/3 | 6/2 | 4/4 | 5/4 | 12/5 | 8/5 | 14/9 |
| M75 / 2" 1/2 | - | - | - | 3/1 | 3/2 | 4/2 | 3/3 | 4/3 | 6/3 | 6/4 | 6/4 |
| M80 / 3" | - | - | - | 2/1 | 2/2 | 3/1 | 2/2 | 3/2 | 4/2 | 5/3 | 5/3 |

Maximum number of entries on sides A/B under IECEx directive

| TYPE | EJB-2 | EJB-3 | EJB-4 | EJB-5 | EJB-6 | EJB-9 | EJB-11 | EJB-12 | EJB-13 | EJB-13A |
|--------------|-------|-------|-------|-------|-------|-------|--------|--------|--------|---------|
| M20 / 1/2" | 5/4 | 8/4 | 11/8 | 11/8 | 24/18 | 14/10 | 15/11 | 18/12 | 15/12 | 20/14 |
| M25 / 3/4" | 5/3 | 8/3 | 11/6 | 11/7 | 14/10 | 14/8 | 15/9 | 18/10 | 15/10 | 20/12 |
| M32 / 1" | 4/2 | 6/2 | 6/4 | 7/5 | 12/9 | 6/8 | 8/6 | 9/7 | 8/7 | 12/8 |
| M50 / 1" 1/2 | 2/1 | 3/1 | 4/3 | 4/3 | 5/4 | 6/3 | 6/4 | 8/5 | 5/3 | 9/6 |
| M63 / 2" | 1/1 | 2/1 | 3/2 | 3/2 | 4/3 | 3/2 | 4/3 | 8/3 | 5/2 | 8/5 |
| M75 / 2" 1/2 | - | - | - | - | - | 1/1 | 2/1 | 3/2 | 3/2 | 4/3 |
| M80 / 3" | - | - | - | - | - | - | 1/1 | 2/1 | 2/1 | 3/2 |

EXPLOSION GROUP IIB + H₂

EJB.. Series enclosures – Galvanized carbon steel (iron)



EJB.. series enclosures offers Ex-d IIB or IIB+H₂ mode of protection.

They are suitable for hazardous areas of industrial plants for indoor and outdoor applications

They can be equipped with following components:

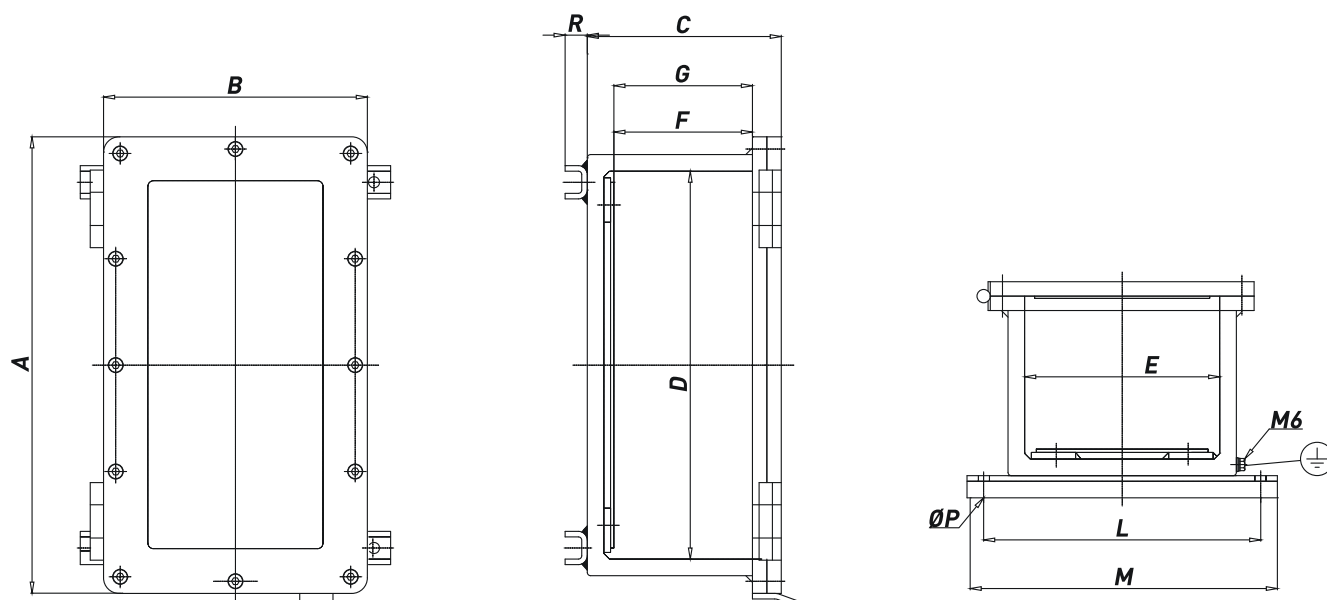
- Push buttons and mechanical operators PL.. Series;
- Rotating switches PSRC Series;
- Signalling lamps PL.. Series;
- Potentiometers;
- Rotating handles SRC-1 or SRC-10;
- Measurement instruments;
- Electric and electronic equipment;
- Windows made of tempered glass.

They can be used in different applications such as push button stations, instrument housing, lighting distribution panels, power distribution panels, heat tracing panels, motor protection, etc.

TECHNICAL FEATURES

| | |
|---|--|
| Material | Galvanized carbon steel |
| IP rating | IP65, IP66, IP67 with flanged joint coated with silicone grease |
| Ambient temperature range | -50°C to +55°C -20°C to +55°C (IECEX Certificate) |
| Approvals | INERIS 00ATEX0021X GOST R IECEX INE 10.0015X |
| Marking | II 2 GD Ex-d IIB T(**) Gb or Ex-d IIB+H ₂ T(**) Gb Ex-tb IIIC T(**) Db IP65 or 66 or 67 ** T6/T85°C, T5/T100°C, T4/T135°C, T3/T200°C II 2(1) GD Ex-d [ia Ga] IIB T6 Gb or Ex-d [ia Ga] IIB+H ₂ T6 Gb Ex-tb [ia Da] IIIC T85°C Db IP65 or 66 or 67 II 2(2) GD Ex-d [ib] IIB T6 Gb or Ex-d [ib] IIB+H ₂ T6 Gb Ex-tb [ib] IIIC T85°C Db IP65 or 66 or 67 NOTE: under IEC Ex directive, enclosures are suitable for IIB group of gases/dusts only |
| Surface treatment | Hot dip galvanization |
| Entries | Metric pitch 1.5, ANSI B1.20.1 NPT, UNI-6125 |
| Hardware and screws | AISI316 Stainless steel external screws |
| Standard certificate label | Made by self adhesive UV and corrosion resistant polyester, approved by INERIS Laboratory. |
| Accessories available upon request | Drain/breather valve Door handle External polyurethane painting cycle Internal anticondensate painting Traffolyte/Stainless steel certificate label |

Dimensions EJB Galvanized carbon steel



EJB.. Series enclosures c/w internal mounting plate, mounting brackets, hinges – Galvanized carbon steel

| TYPE | DIMENSIONS | | | | | | | | | | | | | | WEIGHT [KG] | AA** ATEX | AA** IECEX | EE |
|---------|------------|-----|-----|-----|-----|-----|-----|-----|-----|-----|-----|----|-----|----|----------------|--------------|---------------|-----------|
| | A | B | C | D | E | F | G | H | I | L | M | N | ØP | R | | | | |
| EJB-2 | 298 | 238 | 174 | 230 | 168 | 95 | 135 | 205 | 140 | 250 | 280 | 9 | M6 | 20 | 35 | 12 | 8 | 160 X 220 |
| EJB-3 | 412 | 238 | 177 | 340 | 167 | 85 | 136 | 330 | 150 | 250 | 280 | 9 | M8 | 20 | 45 | 18 | 10 | 155 X 330 |
| EJB-4 | 418 | 302 | 175 | 335 | 220 | 90 | 132 | 300 | 190 | 300 | 320 | 9 | M8 | 20 | 56 | 20 | 12 | 210 X 325 |
| EJB-5 | 480 | 300 | 232 | 392 | 209 | 125 | 182 | 350 | 185 | 300 | 320 | 9 | M8 | 20 | 70 | 22 | 14 | 200 X 385 |
| EJB-6 | 483 | 408 | 238 | 387 | 310 | 130 | 186 | 355 | 280 | 390 | 420 | 9 | M8 | 20 | 62 | 28 | 16 | 300 X 380 |
| EJB-8 | 634 | 365 | 254 | 530 | 262 | 140 | 204 | 495 | 225 | 340 | 370 | 9 | M8 | 20 | 114 | 36 | - | 250 X 520 |
| EJB-9 | 535 | 468 | 257 | 426 | 363 | 140 | 204 | 410 | 340 | 440 | 470 | 12 | M10 | 20 | 118 | 34 | 18 | 350 X 420 |
| EJB-11 | 596 | 505 | 267 | 483 | 394 | 130 | 204 | 445 | 360 | 480 | 510 | 12 | M10 | 20 | 139 | 44 | 20 | 380 X 470 |
| EJB-12 | 805 | 455 | 310 | 690 | 335 | 170 | 243 | 640 | 285 | 425 | 450 | 14 | M12 | 20 | 181 | 54 | 24 | 325 X 625 |
| EJB-13 | 832 | 607 | 314 | 723 | 500 | 115 | 236 | 630 | 405 | 580 | 620 | 14 | M12 | 20 | 235 | 76 | 28 | 463 X 683 |
| EJB-13A | 832 | 607 | 400 | 723 | 500 | 205 | 322 | 630 | 405 | 580 | 620 | 14 | M12 | 20 | 261 | 76 | 28 | 463 X 683 |

For complete junction boxes is necessary to ask to the Sales Office.
Maximum quantity of M32x1,5 operators on door.

Maximum number of entries on sides A/B under ATEX directive

| TYPE | EJB-2 | EJB-3 | EJB-4 | EJB-5 | EJB-6 | EJB-8 | EJB-9 | EJB-11 | EJB-12 | EJB-13 | EJB-13A |
|--------------|-------|-------|-------|-------|-------|-------|-------|--------|--------|--------|---------|
| M20 / 1/2" | 9/7 | 14/7 | 14/9 | 27/13 | 24/18 | 35/16 | 27/24 | 32/27 | 61/28 | 48/32 | 81/54 |
| M25 / 3/4" | 9/5 | 7/3 | 7/4 | 14/7 | 14/10 | 29/13 | 24/18 | 21/27 | 40/18 | 27/18 | 54/36 |
| M32 / 1" | 4/3 | 6/3 | 6/4 | 12/5 | 12/9 | 18/8 | 12/10 | 14/12 | 32/16 | 23/16 | 35/24 |
| M50 / 1" 1/2 | 3/2 | 4/2 | 4/3 | 5/2 | 5/4 | 7/3 | 9/9 | 6/5 | 16/7 | 9/6 | 18/10 |
| M63 / 2" | 2/1 | 3/1 | 3/2 | 4/2 | 4/3 | 6/2 | 4/4 | 5/4 | 12/5 | 8/5 | 14/9 |
| M75 / 2" 1/2 | - | - | - | 3/1 | 3/2 | 4/2 | 3/3 | 4/3 | 6/3 | 6/4 | 6/4 |
| M80 / 3" | - | - | - | 2/1 | 2/2 | 3/1 | 2/2 | 3/2 | 4/2 | 5/3 | 5/3 |

Maximum number of entries on sides A/B under IECEx directive

| TYPE | EJB-2 | EJB-3 | EJB-4 | EJB-5 | EJB-6 | EJB-9 | EJB-11 | EJB-12 | EJB-13 | EJB-13A |
|--------------|-------|-------|-------|-------|-------|-------|--------|--------|--------|---------|
| M20 / 1/2" | 5/4 | 8/4 | 11/8 | 11/8 | 24/18 | 14/10 | 15/11 | 18/12 | 15/12 | 20/14 |
| M25 / 3/4" | 5/3 | 8/3 | 11/6 | 11/7 | 14/10 | 14/8 | 15/9 | 18/10 | 15/10 | 20/12 |
| M32 / 1" | 4/2 | 6/2 | 6/4 | 7/5 | 12/9 | 6/8 | 8/6 | 9/7 | 8/7 | 12/8 |
| M50 / 1" 1/2 | 2/1 | 3/1 | 4/3 | 4/3 | 5/4 | 6/3 | 6/4 | 8/5 | 5/3 | 9/6 |
| M63 / 2" | 1/1 | 2/1 | 3/2 | 3/2 | 4/3 | 3/2 | 4/3 | 8/3 | 5/2 | 8/5 |
| M75 / 2" 1/2 | - | - | - | - | - | 1/1 | 2/1 | 3/2 | 3/2 | 4/3 |
| M80 / 3" | - | - | - | - | - | - | 1/1 | 2/1 | 2/1 | 3/2 |

EXPLOSION GROUP IIB + H2

EJB.. Series

SPARES & ACCESSORIES

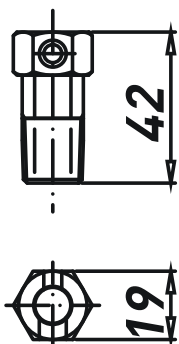
Wall mounting brackets

| CODE | TYPE |
|--------------|--|
| B0A01.000020 | MOUNTING BRACKETS FOR EJB-2 + SCREWS (STF-2) |
| B0A01.000021 | MOUNTING BRACKETS FOR EJB-3 + SCREWS (STF-3) |
| B0A01.000022 | MOUNTING BRACKETS FOR EJB-4/5 + SCREWS (STF-4/5) |
| B0A01.000023 | MOUNTING BRACKETS FOR EJB-6 + SCREWS (STF-6) |
| B0A01.000024 | MOUNTING BRACKETS FOR EJB-8 + SCREWS (STF-8) |
| B0A01.000025 | MOUNTING BRACKETS FOR EJB-9 + SCREWS (STF-9) |
| B0A01.000026 | MOUNTING BRACKETS FOR EJB-10 + SCREWS (STF-10) |
| B0A01.000027 | MOUNTING BRACKETS FOR EJB-11 + SCREWS (STF-11) |
| B0A01.000028 | MOUNTING BRACKETS FOR EJB-12 + SCREWS (STF-12) |
| B0A01.000029 | MOUNTING BRACKETS FOR EJB-13 + SCREWS (STF-13) |

Available upon request AISI316L made version

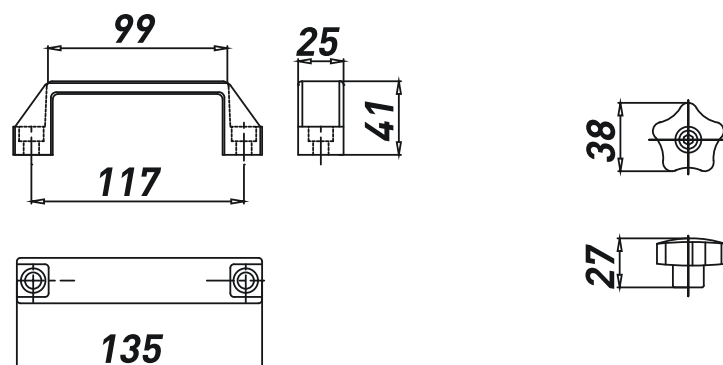
Drain/Breather valve

| CODE | TYPE |
|--------------|-------------|
| C0102.000051 | ECR 1 VALVE |



Door handles

| CODE | TYPE |
|--------------|---|
| B0A01.000049 | HANDLE FOR EJB (FROM 7 TO 13A) + SCREWS |
| B0A01.000048 | KNOB FOR EJB (UP TO 6) + SCREWS |

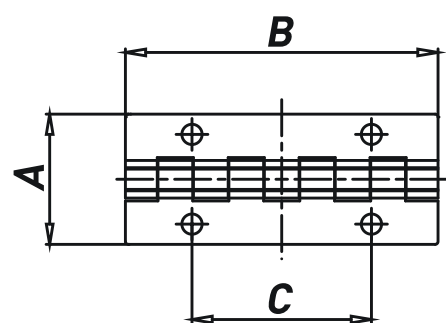


Hinges (for aluminium EJB Series)

| CODE | TYPE |
|--------------|-------------------------------------|
| B0A01.000053 | AISI304 HINGES L=60X38MM + SCREWS |
| B0A01.000052 | AISI316L HINGES L=60X38MM + SCREWS |
| B0A01.000044 | AISI304 HINGES L=60X45MM + SCREWS |
| B0A01.000043 | AISI316L HINGES L=60X45MM + SCREWS |
| B0A01.000046 | AISI304 HINGES L=108X45MM + SCREWS |
| B0A01.000045 | AISI316L HINGES L=108X45MM + SCREWS |

Selection table

| HINGES L=60X38MM | HINGES L=60X45MM | HINGES L=108X45MM |
|------------------|------------------|-------------------|
| EJB-2 | EJB-6 | EJB-10 SHORT SIDE |
| EJB-3 | EJB-8 | EJB-11 SHORT SIDE |
| EJB-3A | EJB-9 | EJB-12 SHORT SIDE |
| EJB-4 | EJB-10 LONG SIDE | EJB-13 |
| EJB-5 | EJB-11 LONG SIDE | EJB-13A |
| | EJB-12 LONG SIDE | |



Windows

The windows may have square, rectangular, circular shape with following dimensions:

- Square shape: side dimension from 40 to 400mm
- Rectangular shape: long side dimension from 70 to 400mm; short side dimension from 40 to 200mm
- Circular shape: diameter from 70 to 250mm

As standard sizes we propose:

- Rectangular shape type B; 40mm x 70mm
- Rectangular shape type C; 40mm x 200mm
- Rectangular shape type D; 100mm x 270mm
- Rectangular shape type E; 175mm x 380mm
- Circular shape Ø 70mm, 85mm, 100mm, 120mm, 150mm, 170mm, 190mm, 230mm

For more informations, please ask to the Sales Office.

NOTE: Windows are not IECEx certified.

EXPLOSION GROUP IIC

GUB.. Series enclosures - Aluminium



GUB.. series enclosures offers Ex-d IIC mode of protection. They are suitable for hazardous areas of industrial plants for indoor and outdoor applications. GUB.. QL version can be equipped with following components:

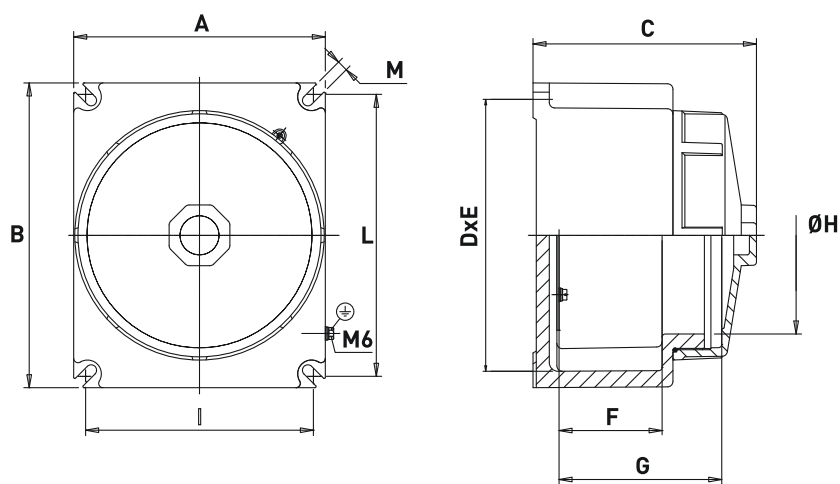
- Push buttons and mechanical operators PL.. Series;
- Rotating switches PSRC Series;
- Signalling lamps PL.. Series;
- Potentiometers;
- Rotating handles SRC-1 or SRC-10;
- Measurement instruments;
- Electric and electronic equipment;
- Windows made of tempered glass (EMH version).

They can be used in different applications such as push button stations, instrument housing, lighting distribution panels, power distribution panels, heat tracing panels, motor protection, etc.

TECHNICAL FEATURES

| | |
|---|--|
| Material | Aluminium with low content of copper Stainless steel AISI316L (upon request) |
| IP rating | IP66 |
| Ambient temperature range | -50°C to +55°C -50°C to +55°C (IECEx Component Certificate) |
| Approvals | INERIS 00ATEX0033X GOST R |
| Marking | II 2 GD Ex-d IIC T(*) Gb Ex-tb IIIC T(*) Db IP66 * T6/T85°C, T5/T100°C, T4/T135°C II 2(1) GD Ex-d [ia Ga] IIC T6 Gb Ex-tb [ia Da] IIIC T85°C Db IP66 II 2(2) GD Ex-d [ib] IIC T6 Gb Ex-tb [ib] IIIC T85°C Db IP66 |
| Surface treatment | Green colour polyurethane painting cycle RAL6003 (other colour available upon request) |
| Entries | Metric pitch 1.5, ANSI B1.20.1 NPT, UNI-6125 |
| Standard certificate label | Made by self adhesive UV and corrosion resistant polyester, approved by INERIS Laboratory. |
| Accessories available upon request | Drain/breather valve Internal anticondensate painting Traffolyte/Stainless steel certificate label Stainless steel construction |

Dimensions GUB..



GUB Series enclosures c/w internal mounting plate - Aluminium

| TYPE | DIMENSIONS | | | | | | | | | | | WEIGHT [kg] ALLUMINIUM |
|--------|------------|-----|-----|-----|-----|-----|-----|-----|-----|-----|----|---------------------------|
| | A | B | C | D | E | F | G | ØH | I | L | M | |
| GUB-01 | 169 | 169 | 152 | 139 | 139 | 62 | 105 | 125 | 150 | 150 | 7 | 3.60 |
| GUB-02 | 190 | 190 | 164 | 160 | 160 | 63 | 113 | 144 | 170 | 170 | 8 | 4.70 |
| GUB-03 | 210 | 210 | 179 | 180 | 180 | 78 | 127 | 167 | 190 | 190 | 8 | 6.00 |
| GUB-04 | 232 | 281 | 206 | 202 | 251 | 97 | 152 | 183 | 210 | 260 | 8 | 8.90 |
| GUB-05 | 257 | 298 | 222 | 227 | 268 | 106 | 163 | 206 | 235 | 275 | 8 | 11.90 |
| GUB-06 | 295 | 330 | 248 | 259 | 295 | 140 | 203 | 242 | 270 | 305 | 10 | 15.80 |

For complete junction boxes is necessary to ask to the Sales Office.
Maximum quantity of M32x1,5 operators on door.

Maximum number of entries on sides A/B under ATEX directive

| TYPE | GUB-01 | GUB-02 | GUB-03 | GUB-04 | GUB-05 | GUB-06 |
|--------------|--------|--------|--------|--------|--------|--------|
| M20 / 1/2" | 3/3 | 5/5 | 5/5 | 5/7 | 7/9 | 7/9 |
| M25 / 3/4" | 3/3 | 5/5 | 5/5 | 5/7 | 7/9 | 7/9 |
| M32 / 1" | 2/2 | 3/3 | 3/3 | 5/5 | 5/7 | 5/7 |
| M50 / 1" 1/2 | 1/1 | 1/1 | 2/2 | 2/3 | 2/3 | 3/5 |
| M63 / 2" | 1/1 | 1/1 | 1/1 | 2/2 | 2/2 | 2/3 |
| M75 / 2" 1/2 | - | - | - | 1/2 | 1/2 | 2/2 |
| M80 / 3" | - | - | - | 1/1 | 1/2 | 1/2 |

Maximum number of entries on sides A/B under IEC Ex directive

| TYPE | GUB-01 | GUB-02 | GUB-03 | GUB-04 | GUB-05 | GUB-06 |
|--------------|--------|--------|--------|--------|--------|--------|
| M20 / 1/2" | 3/3 | 5/5 | 5/5 | 5/7 | 7/9 | 8/9 |
| M25 / 3/4" | 3/3 | 5/5 | 5/5 | 5/7 | 7/9 | 7/9 |
| M32 / 1" | 2/2 | 3/3 | 3/3 | 5/5 | 5/7 | 5/7 |
| M50 / 1" 1/2 | 1/1 | 1/1 | 2/2 | 2/3 | 2/3 | 3/5 |
| M63 / 2" | 1/1 | 1/1 | 1/1 | 2/2 | 2/2 | 2/3 |
| M75 / 2" 1/2 | - | - | - | - | - | - |
| M80 / 3" | - | - | - | - | - | - |

EXPLOSION GROUP IIC

GUB../QL Series enclosures - Aluminium



GUB.. series enclosures offers Ex-d IIC mode of protection.

They are suitable for hazardous areas of industrial plants for indoor and outdoor applications.

GUB.. QL version can be equipped with following components:

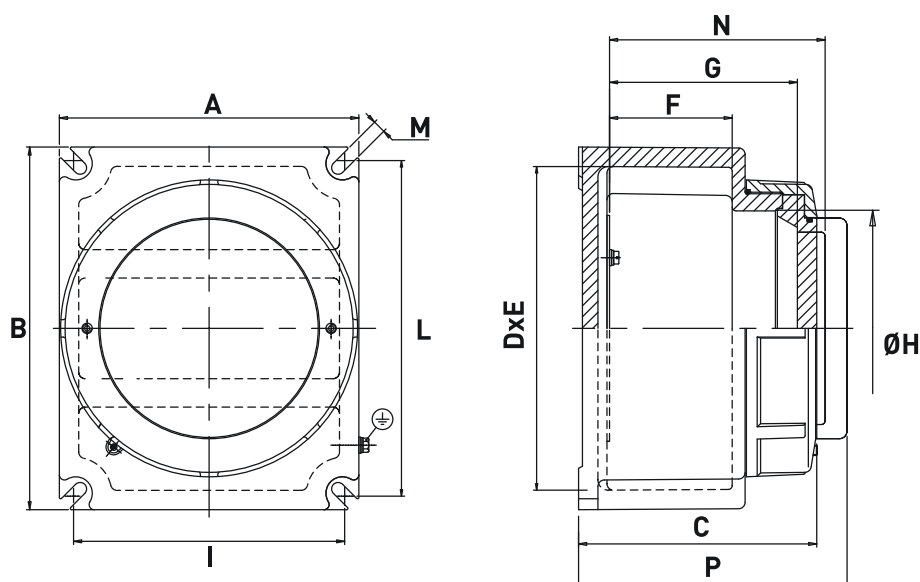
- Push buttons and mechanical operators PL.. Series;
- Rotating switches PSRC Series;
- Signalling lamps PL.. Series;
- Potentiometers;
- Rotating handles SRC-1 or SRC-10;
- Measurement instruments;
- Electric and electronic equipment;
- Windows made of tempered glass (EMH version).

They can be used in different applications such as push button stations, instrument housing, lighting distribution panels, power distribution panels, heat tracing panels, motor protection, etc.

TECHNICAL FEATURES

| | |
|--|--|
| Material | Aluminium with low content of copper |
| IP rating | IP66 |
| Ambient temperature range | -50°C to +55°C |
| Approvals (Complete enclosures) | INERIS 00ATEX0033X GOST R |
| Marking | II 2 GD Ex-d IIC T(*) Gb Ex-tb IIIC T(*) Db IP66 * T6/T85°C, T5/T100°C, T4/T135°C II 2(1) GD Ex-d [ia Ga] IIC T6 Gb Ex-tb [ia Da] IIIC T85°C Db IP66 II 2(2) GD Ex-d [ib] IIC T6 Gb Ex-tb [ib] IIIC T85°C Db IP66 |
| Surface treatment | Green colour polyurethane painting cycle RAL6003 (other colour available upon request) |
| Entries | Metric pitch 1.5, ANSI B1.20.1 NPT, UNI-6125 |
| Standard certificate label | Made by self adhesive UV and corrosion resistant polyester, approved by INERIS Laboratory. |
| Accessories available upon request | Drain/breather valve Internal anticondensate painting Traffolyte/Stainless steel certificate label Stainless steel construction |

Dimensions GUB../QL



GUB../QL Series enclosures c/w internal mounting plate - Aluminium

| TYPE | DIMENSIONS | | | | | | | | | | | | | WEIGHT [kg] | AA** ATEX |
|-----------|------------|-----|-----|-----|-----|-----|-----|-----|-----|-----|----|-----|-----|-------------|-----------|
| | A | B | C | D | E | F | G | ØH | I | L | M | N | P | | |
| GUB-02 QL | 190 | 190 | 139 | 160 | 160 | 63 | 104 | 144 | 170 | 170 | 8 | 143 | 179 | 4.70 | 3 |
| GUB-03 QL | 210 | 210 | 160 | 180 | 180 | 78 | 119 | 167 | 190 | 190 | 8 | 139 | 174 | 6.00 | 4 |
| GUB-06 QL | 295 | 330 | 236 | 259 | 195 | 140 | 186 | 242 | 270 | 305 | 10 | - | - | 15.80 | 10 |

For complete junction boxes is necessary to ask to the Sales Office.
Maximum quantity of M32x1,5 operators on door.

Maximum number of entries on sides A/B under ATEX directive

| TYPE | GUB-01 | GUB-02 | GUB-06 |
|--------------|--------|--------|--------|
| M20 / 1/2" | 5/5 | 5/5 | 7/9 |
| M25 / 3/4" | 5/5 | 5/5 | 7/9 |
| M32 / 1" | 3/3 | 3/3 | 5/7 |
| M50 / 1" 1/2 | 1/1 | 2/2 | 3/5 |
| M63 / 2" | 1/1 | 1/1 | 2/3 |
| M75 / 2" 1/2 | - | - | 2/2 |
| M80 / 3" | - | - | 1/2 |

Maximum number of entries on sides A/B under IEC Ex directive

| TYPE | GUB-01 | GUB-02 | GUB-06 |
|--------------|--------|--------|--------|
| M20 / 1/2" | 5/5 | 5/5 | 8/9 |
| M25 / 3/4" | 5/5 | 5/5 | 7/9 |
| M32 / 1" | 3/3 | 3/3 | 5/7 |
| M50 / 1" 1/2 | 1/1 | 2/2 | 3/5 |
| M63 / 2" | 1/1 | 1/1 | 2/3 |
| M75 / 2" 1/2 | - | - | - |
| M80 / 3" | - | - | - |

EXPLOSION GROUP IIC

GUB/EMH.. Series enclosures - Aluminium

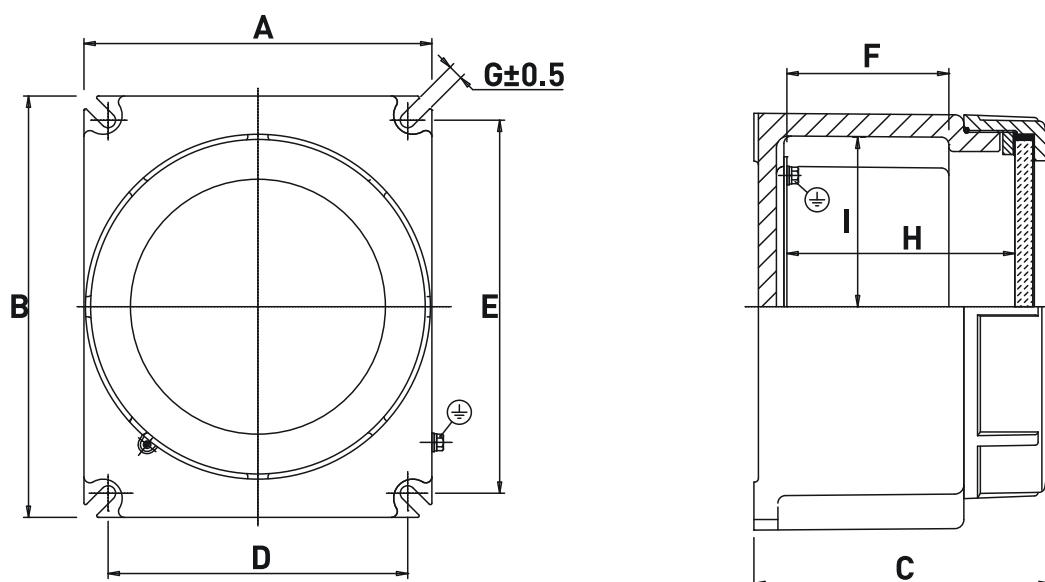


GUB/EMH.. series instrument housings are based on the features of our GUB.. enclosures and offer Ex-d IIC mode of protection. They are suitable for hazardous areas of industrial plants for indoor and outdoor applications.

TECHNICAL FEATURES

| | |
|---|--|
| Material | Aluminium with low content of copper |
| IP rating | IP66 |
| Ambient temperature range | -50°C to +55°C |
| Approvals (Complete enclosures) | INERIS 00ATEX0033X GOST R |
| Marking | II 2 GD Ex-d IIC T(*) Gb Ex-tb IIIC T(*) Db IP66 * T6/T85°C, T5/T100°C, T4/T135°C |
| Surface treatment | Green colour polyurethane painting cycle RAL6003 (other colour available upon request) |
| Entries | Metric pitch 1.5, ANSI B1.20.1 NPT, UNI-6125 |
| Standard certificate label | Made by self adhesive UV and corrosion resistant polyester, approved by INERIS Laboratory. |
| Accessories available upon request | Drain/breather valve Internal anticondensate painting Traffolyte/Stainless steel certificate label |

Dimensions GUB/EMH..



GUB/EMH.. Series enclosures c/w internal mounting plate - Aluminium

| TYPE | DIMENSIONS | | | | | | | WINDOW DIAMETER | WEIGHT [kg] |
|--------------|------------|-----|-----|-----|-----|-----|-----|-----------------|-------------|
| | A | B | C | D | E | F | H | | |
| EMH-160 + PS | 210 | 210 | 160 | 180 | 180 | 78 | 115 | 155 | 6.00 |
| EMH-175 + PS | 232 | 281 | 185 | 202 | 251 | 97 | 141 | 170 | 8.90 |
| EMH-200 + PS | 257 | 298 | 200 | 227 | 268 | 106 | 150 | 195 | 11.90 |
| EMH-230 + PS | 295 | 330 | 236 | 259 | 295 | 140 | 189 | 230 | 15.80 |

For complete junction boxes is necessary to ask to the Sales Office.

Maximum number of entries on sides A/B under ATEX directive

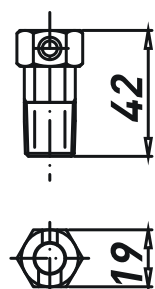
| TYPE | EMH-160 | EMH-175 | EMH-200 | EMH-230 |
|--------------|---------|---------|---------|---------|
| M20 / 1/2" | 5/5 | 5/7 | 7/9 | 7/9 |
| M25 / 3/4" | 5/5 | 5/7 | 7/9 | 7/9 |
| M32 / 1" | 3/3 | 5/5 | 5/7 | 5/7 |
| M50 / 1" 1/2 | 2/2 | 2/3 | 2/3 | 3/5 |
| M63 / 2" | 1/1 | 2/2 | 2/2 | 2/3 |
| M75 / 2" 1/2 | - | 1/2 | 1/2 | 2/2 |
| M80 / 3" | - | 1/1 | 1/2 | 1/2 |

GUB.. Series

SPARES & ACCESSORIES

Drain/Breather valve

| CODE | TYPE |
|--------------|-------------|
| C0102.000051 | ECR 1 VALVE |



EXPLOSION GROUP IIC

CPS../EMH.. Series enclosures - Aluminium



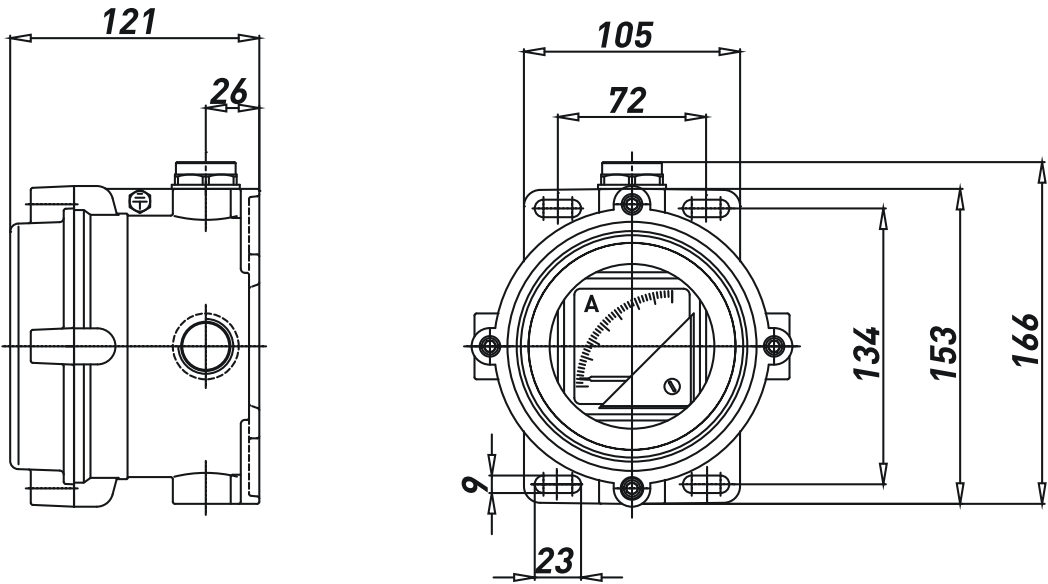
CPS/EMH.. series instrument housings are based on the features of our CPS.. boxes and offer Ex-d IIC mode of protection.

They are suitable for hazardous areas of industrial plants for indoor and outdoor applications.

TECHNICAL FEATURES

| | |
|-----------------------------------|--|
| Material | Aluminium with low content of copper |
| IP rating | IP66 |
| Ambient temperature range | -50°C to +55°C |
| Approvals | INERIS 03ATEX0009 GOST R |
| Marking | II 2 GD Ex-d IIC T(*) Gb Ex-tb IIIC T(*) Db IP66 * T6/T85°C, T5/T100°C, T4/T135°C |
| Surface treatment | Green colour polyurethane painting cycle RAL6003 (other colour available upon request) |
| Entries | Metric pitch 1.5, ANSI B1.20.1 NPT, UNI-6125 |
| Standard certificate label | Made by self adhesive UV and corrosion resistant polyester, approved by INERIS Laboratory. |

Dimensions CPS../EMH..



CPS../EMH.. enclosures

| TYPE | CODE RAL6003 | WINDOW DIAMETER | WEIGHT [kg] |
|----------------|-----------------|-----------------|-------------|
| EMH-90 M25X1,5 | B0701.000001 | 90 | 1.40 |
| EMH-90 3/4"NPT | B0701.000006 | 90 | 1.40 |

Ammeter / Voltmer available on request.