

FLAMEPROOF

CP../EFDCN.. Series push button stations



The CP../EFDCN.. range of control stations are based on the features of our CP../CPS.. enclosures, offer an Ex-d IIC mode of protection and they can be equipped with different components (push button, selector switches, potentiometers, signal lamps, rotary handles, ammeters, voltmeters, etc.) Boxes are manufactured in aluminium with low content of copper and complete with threaded hubs suitable for cable glands or conduit, connection does not affect the internal void, which remains available for terminals wiring. Internal and external screws are made of AISI316 stainless steel. This series is tailor made on the base of customer specification, including quantity and type of operators.

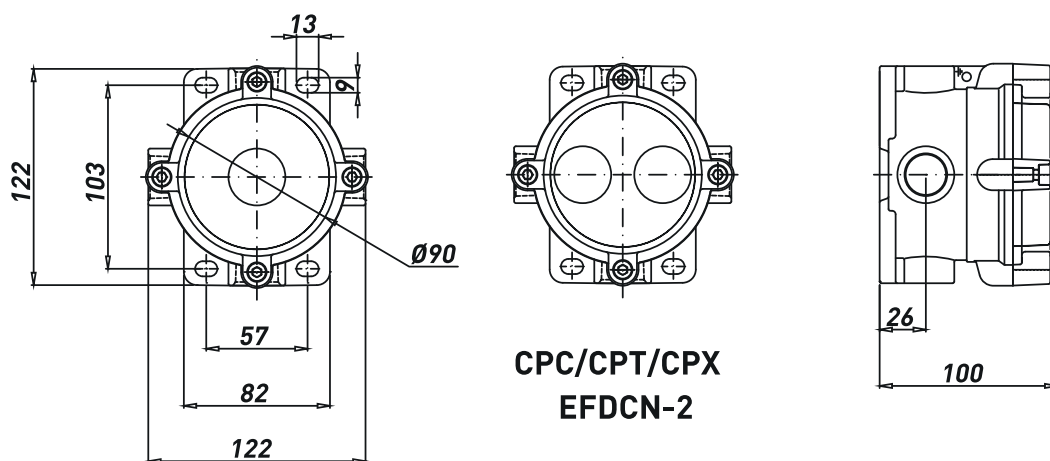
Based on the customer's needs and certificate requirements, our technical department will advise and select the most suitable combination.

These boxes are suitable for hazardous areas of industrial plants for indoor and outdoor applications.

TECHNICAL FEATURES

Material	Aluminium with low content of copper
IP rating	IP66
Ambient temperature range	-50°C to +60°C
Approvals	INERIS 03ATEX0009 GOST R
Marking	II 2 GD Ex-d IIC T(*) Gb Ex-t IIIC T(*) Db IP66 * T6/T85°C, T5/T100°C, T4/T135°C
Surface treatment	Painted by green colour polyurethane painting cycle RAL6003 (other colour available upon request)
Thread	Metric pitch 1.5, ANSI B1.20.1 NPT, UNI-6125
Standard certificate label	Made by self adhesive UV and corrosion resistant polyester, approved by INERIS Laboratory.
Accessories available upon request	Internal anticondensate painting Traffolyte/Stainless steel certificate label Hot deep galvanized steel or Stainless Steel AISI316 stand / canopy.

Dimensions CP../EFDCN



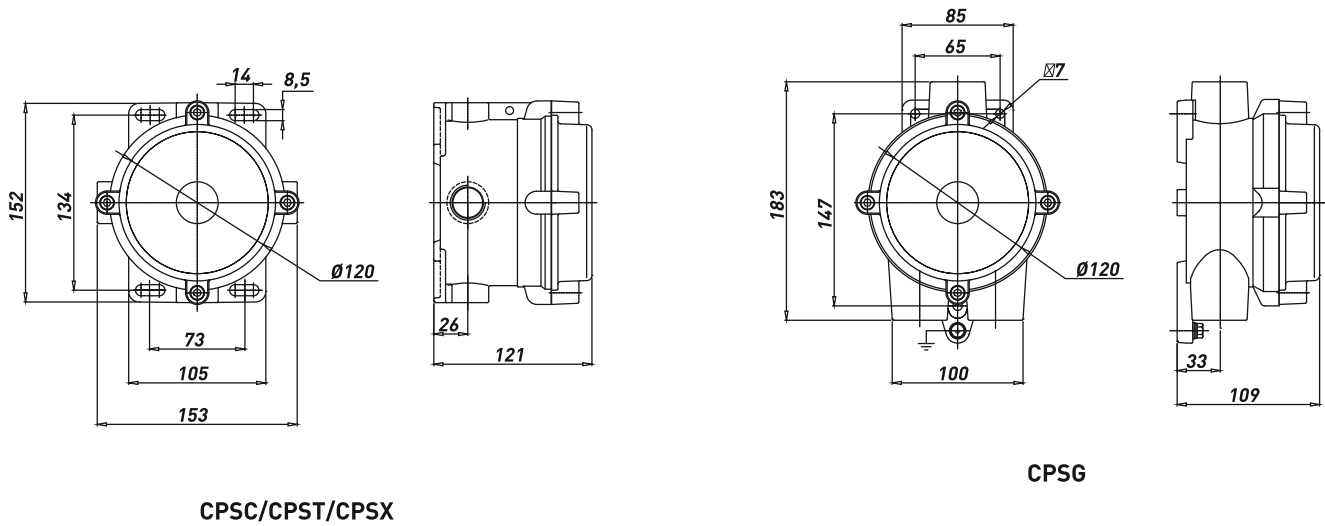
CPC/CPT/CPX EFDCN-1

CP../EFDCN Series push button stations (Selection table - empty boxes)

N° OF ENTRIES	TYPE	COLOUR
2	CPC-16 2XM20	RAL6003
	CPC-26 2XM25	RAL6003
	CPC-26 2X3/4"GK	RAL6003
	CPC-26 2X3/4"NPT	RAL6003
3	CPT-16 3XM20	RAL6003
	CPT-26 3XM25	RAL6003
	CPT-26 3X3/4"GK	RAL6003
	CPT-26 3X3/4"NPT	RAL6003
4	CPX-16 4XM20	RAL6003
	CPX-26 4XM25	RAL6003
	CPX-26 4X3/4"GK	RAL6003
	CPX-26 4X3/4"NPT	RAL6003

* For complete push button stations is necessary to ask to the Sales Office.

Dimensions CPS../EFDCN

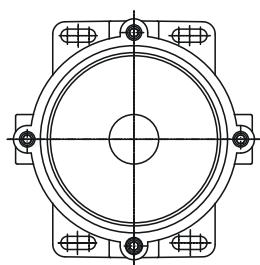


CPS../EFDCN Series push button stations (Selection table - empty boxes)

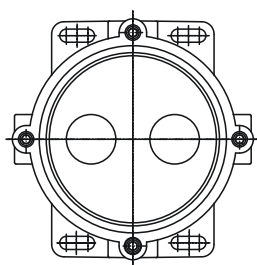
N° OF ENTRIES		TYPE
2		CPSC 2XM20
		CPSC 2XM25
		CPSC 2XM32
		CPSC 2X3/4" GK
		CPSC 2X3/4" NPT
		CPSC 2X1" GK
		CPSC 2X1" NPT
3		CPST 2XM20
		CPST 3XM25
		CPST 3XM32
		CPST 3X3/4" GK
		CPST 3X3/4" NPT
		CPST 3X1" GK
3		CPST 3X1" NPT
		CPSG 2XM20
		CPSG 3XM25
		CPSG 3XM32
		CPSG 3X3/4" GK
		CPSG 3X3/4" NPT
4		CPSG 3X1" GK
		CPSG 3X1" NPT
		CPSX 2XM20
		CPSX 4XM25
		CPSX 4XM32
		CPSX 4X3/4" GK
		CPSX 4X3/4" NPT
		CPSX 4X1" GK
		CPSX 4X1" NPT

* For complete push button stations is necessary to ask to the Sales Office.

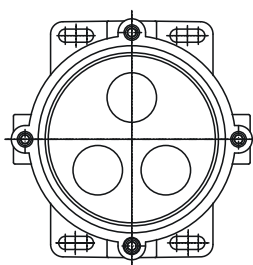
Dimensions CP../CPS.. EFDCN



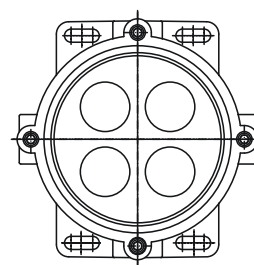
EFDCN-1



EFDCN-2



EFDCN-3



EFDCN-4

CP../CPS.. EFDCN Series complete push button stations

TYPE	CODE	ENTRIES	WEIGHT [kg]	AMBIENT TEMPERATURE	COLOUR	DIAGRAM
CPC-26/EFDCN-PE(1NO/1NC) - FOOT SWITCH	B0803.000046	M25X1,5	3.20	(-20°;+40°)	RAL-6003	
CPC-26/EFDCN-PE(1NO/1NC) - FOOT SWITCH	B0803.000085	3/4" NPT	3.20	(-20°;+40°)	RAL-6003	
CPC-26/EFDCN-PE(1NO/1NC) - FOOT SWITCH	B0803.000069	3/4" UNI-6125	3.20	(-20°;+40°)	RAL-6003	
CPC-26/EFDCN-PP - BLACK P.B. 1NO / RED P.B. 1NC	B0803.000039	M25X1,5	1.22	(-20°;+40°)	RAL-6003	
CPC-26/EFDCN-PP - BLACK P.B. 1NO / RED P.B. 1NC	B0803.000040	3/4" NPT	1.22	(-20°;+40°)	RAL-6003	
CPC-26/EFDCN-PP - BLACK P.B. 1NO / RED P.B. 1NC	B0803.000086	3/4" UNI-6125	1.22	(-20°;+40°)	RAL-6003	
CPC-26/EFDCN-P - BLACK P.B. 1NO/1NC	B0803.000036	M25X1,5	1.10	(-20°;+40°)	RAL-6003	
CPC-26/EFDCN-P - BLACK P.B. 1NO/1NC	B0803.000038	3/4" NPT	1.10	(-20°;+40°)	RAL-6003	
CPC-26/EFDCN-P - BLACK P.B. 1NO/1NC	B0803.000070	3/4" UNI-6125	1.10	(-20°;+40°)	RAL-6003	
CPSC-26/EFDCN-PPL - BLACK P.B. 1NO / RED P.B. 1NC / RED P.L.	B0803.000041	M25X1,5	1.70	(-20°;+40°)	RAL-6003	
CPSC-26/EFDCN-PPL - BLACK P.B. 1NO / RED P.B. 1NC / RED P.L.	B0803.000042	3/4" NPT	1.70	(-20°;+40°)	RAL-6003	
CPSC-26/EFDCN-PPL - BLACK P.B. 1NO / RED P.B. 1NC / RED P.L.	B0803.000087	3/4" UNI-6125	1.70	(-20°;+40°)	RAL-6003	
CPC-26/EFDCN-EM - BLACK P.B. 1NO/1NC	B0803.000043	M25X1,5	1.20	(-20°;+40°)	RAL-6003	
CPC-26/EFDCN-EM - BLACK P.B. 1NO/1NC	B0803.000044	3/4" NPT	1.20	(-20°;+40°)	RAL-6003	
CPC-26/EFDCN-EM - BLACK P.B. 1NO/1NC	B0803.000078	3/4" UNI-6125	1.20	(-20°;+40°)	RAL-6003	
CPC-26/EFDCN-EM - BLACK P.B. 1NO/1NC PRESSED	B0803.000045	M25X1,5	1.20	(-20°;+40°)	RAL-6003	
CPC-26/EFDCN-EM - RED P.B. 1NO/1NC	B0803.000096	M25X1,5	1.20	(-20°;+40°)	RAL-6003	

FLAMEPROOF

CP../EFSRC.. Series selector switches



The CP../EFSRC.. range of control stations are based on the features of our CP../CPS.. enclosures, offer an Ex-d IIC mode of protection and they can be equipped with different components (push button, selector switches, potentiometers, signal lamps, rotary handles, ammeters, voltmeters, etc.)

Boxes are manufactured in aluminium with low content of copper and complete with threaded hubs suitable for cable glands or conduit, connection does not affect the internal void, which remains available for terminals wiring.

Internal and external screws are made of AISI316 stainless steel.

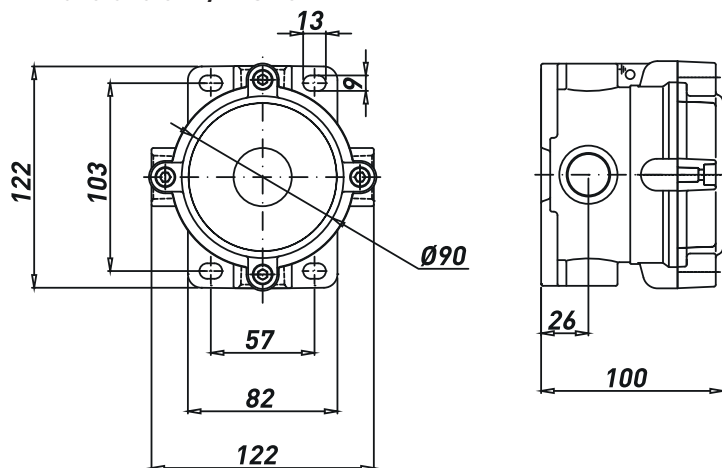
This series is tailor made on the base of customer specification, including quantity and type of operators. Based on the customer's needs and certificate requirements, our technical department will advise and select the most suitable combination.

These boxes are suitable for hazardous areas of industrial plants for indoor and outdoor applications.

TECHNICAL FEATURES




Material	Aluminium with low content of copper
IP rating	IP66
Ambient temperature range	-50°C to +60°C
Approvals	INERIS 03ATEX0009 GOST R
Marking	II 2 GD Ex-d IIC T(*) Gb Ex-t IIIC T(*) Db IP66 * T6/T85°C, T5/T100°C, T4/T135°C
Surface treatment	Painted by green colour polyurethane painting cycle RAL6003 (other colour available upon request)
Thread	Metric pitch 1.5, ANSI B1.20.1 NPT, UNI-6125
Standard certificate label	Made by self adhesive UV and corrosion resistant polyester, approved by INERIS Laboratory.
Accessories available upon request	Internal anticondensate painting Traffolyte/Stainless steel certificate label Hot deep galvanized steel or Stainless Steel AISI316 stand / canopy.

Dimensions CP../EFSRC



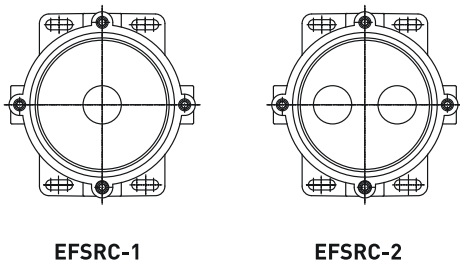
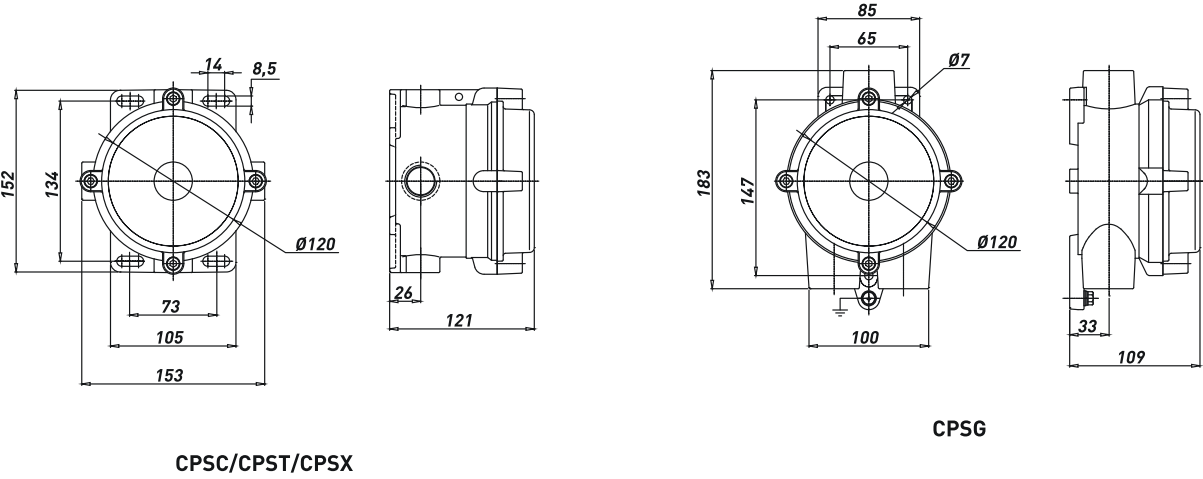
CPC/CPT/CPX
EFSRC-1

CP../EFSRC Series push button stations (Selection table - empty boxes)

N° OF ENTRIES	TYPE	COLOUR
2 	CPC-16 2XM20	RAL6003
	CPC-26 2XM25	RAL6003
	CPC-26 2X3/4"GK	RAL6003
	CPC-26 2X3/4"NPT	RAL6003
3 	CPT-16 3XM20	RAL6003
	CPT-26 3XM25	RAL6003
	CPT-26 3X3/4"GK	RAL6003
	CPT-26 3X3/4"NPT	RAL6003
4 	CPX-16 4XM20	RAL6003
	CPX-26 4XM25	RAL6003
	CPX-26 4X3/4"GK	RAL6003
	CPX-26 4X3/4"NPT	RAL6003

* For complete push button stations is necessary to ask to the Sales Office.

Dimensions CPS../EFSRC



CPS../EFSRC Series push button stations (Selection table - empty boxes)

N° OF ENTRIES		TYPE
2		CPSC 2XM20
		CPSC 2XM25
		CPSC 2XM32
		CPSC 2X3/4" GK
		CPSC 2X3/4" NPT
		CPSC 2X1" GK
		CPSC 2X1" NPT
3		CPST 2XM20
		CPST 3XM25
		CPST 3XM32
		CPST 3X3/4" GK
		CPST 3X3/4" NPT
		CPST 3X1" GK
3		CPST 3X1" NPT
		CPSG 2XM20
		CPSG 3XM25
		CPSG 3XM32
		CPSG 3X3/4" GK
		CPSG 3X3/4" NPT
4		CPSG 3X1" GK
		CPSG 3X1" NPT
		CPSX 2XM20
		CPSX 4XM25
		CPSX 4XM32
		CPSX 4X3/4" GK
		CPSX 4X3/4" NPT
		CPSX 4X1" GK
		CPSX 4X1" NPT

* For complete push button stations is necessary to ask to the Sales Office.

Boxes takes following suffix:

- EFDCN; if assembled with push buttons, pilot lamps, potentiometer, etc.
- EFSRC; if assembled with step, change-over or selector switches.

CP../CPS.. EFSRC Series complete selector switches

TYPE	CODE	DIAGRAM	ENTRIES	WEIGHT [kg]	AMBIENT TEMPERATURE	COLOUR
CPC-26/EF SRC-220	B0803.000001		M25X1,5	1.10	(-20°;+40°)	RAL-6003
CPC-26/EF SRC-220	B0803.000005		3/4" NPT	1.10	(-20°;+40°)	RAL-6003
CPC-26/EF SRC-220	B0803.000088		3/4" UNI-6125	1.10	(-20°;+40°)	RAL-6003
CPC-26/EF SRC-320	B0803.000090		M25X1,5	1.15	(-20°;+40°)	RAL-6003
CPC-26/EF SRC-320	B0803.000089		3/4" NPT	1.15	(-20°;+40°)	RAL-6003
CPC-26/EF SRC-320	B0803.000075		3/4" UNI-6125	1.15	(-20°;+40°)	RAL-6003
CPC-26/EF SRC-420	B0803.000002		M25X1,5	1.15	(-20°;+40°)	RAL-6003
CPC-26/EF SRC-420	B0803.000006		3/4" NPT	1.15	(-20°;+40°)	RAL-6003
CPC-26/EF SRC-420	B0803.000037		3/4" UNI-6125	1.15	(-20°;+40°)	RAL-6003
CPSC-26/EF SRC-432	B0803.000013		M25X1,5	1.30	(-20°;+40°)	RAL-6003
CPSC-26/EF SRC-432	B0803.000016		3/4" NPT	1.30	(-20°;+40°)	RAL-6003
CPSC-26/EF SRC-432	B0803.000107		3/4" UNI-6125	1.30	(-20°;+40°)	RAL-6003
CPC-26/EF SRC-D-220	B0803.000030		M25X1,5	1.15	(-20°;+40°)	RAL-6003
CPC-26/EF SRC-D-220	B0803.000032		3/4" NPT	1.15	(-20°;+40°)	RAL-6003
CPC-26/EF SRC-D-220	B0803.000076		3/4" UNI-6125	1.15	(-20°;+40°)	RAL-6003
CPSC-26/EF SRC-D-320	B0803.000031		M25X1,5	1.20	(-20°;+40°)	RAL-6003
CPSC-26/EF SRC-D-320	B0803.000119		3/4" NPT	1.20	(-20°;+40°)	RAL-6003
CPSC-26/EF SRC-D-320	B0803.000121		3/4" UNI-6125	1.20	(-20°;+40°)	RAL-6003
CPC-26/EF SRC-C-220	B0803.000033		M25X1,5	1.15	(-20°;+40°)	RAL-6003
CPC-26/EF SRC-C-220	B0803.000035		3/4" NPT	1.15	(-20°;+40°)	RAL-6003
CPC-26/EF SRC-C-220	B0803.000077		3/4" UNI-6125	1.15	(-20°;+40°)	RAL-6003
CPSC-26/EF SRC-C-320	B0803.000034		M25X1,5	1.30	(-20°;+40°)	RAL-6003
CPSC-26/EF SRC-C-320	B0803.000122		3/4" NPT	1.30	(-20°;+40°)	RAL-6003
CPSC-26/EF SRC-C-320	B0803.000127		3/4" UNI-6125	1.30	(-20°;+40°)	RAL-6003

FLAMEPROOF

EPKMZ Series enclosures



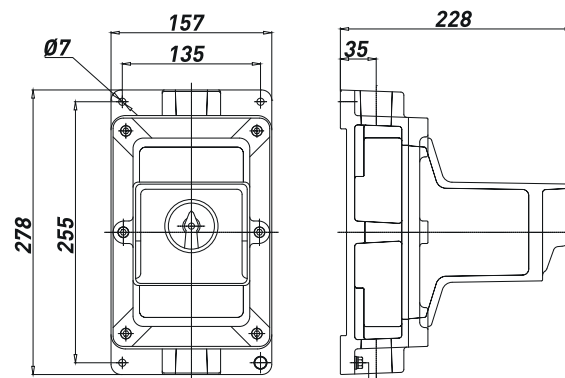
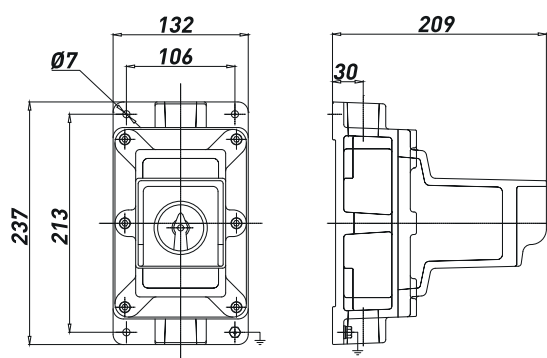
EPKMZ Series enclosures, made of aluminium with low content of copper RAL6003 painted, are used to house motor protector circuit breakers up to 63A.

These boxes are suitable for hazardous areas of industrial plants for indoor and outdoor applications.

TECHNICAL FEATURES

Material	Aluminium with low content of copper
IP rating	IP66, IP67 with flanged joint coated with silicone grease
Ambient temperature range	-30°C to +55°C
Approvals	INERIS 02ATEX0027X GOST R
Marking	II 2 GD Ex-d IIB T6 Gb Ex-tb IIIC T85°C Db IP66/IP67
Surface treatment	Painted by green colour polyurethane painting cycle RAL6003 (other colour available upon request)
Thread	N° 2 entries Metric pitch 1.5, ANSI B1.20.1 NPT, UNI-6125
Standard certificate label	Made by self adhesive UV and corrosion resistant polyester, approved by INERIS Laboratory.
Accessories available upon request	Internal anticondensate painting Traffolyte/Stainless steel certificate label Hot deep galvanized steel or Stainless Steel AISI316 stand / canopy.

Dimensions EPKMZ



EPKMZ-3

EPKMZ-4

EPKMZ Series enclosures

TYPE	CODE	ENTRIES	WEIGHT [kg]	AMBIENT TEMPERATURE	COLOUR
EPKMZ-3 - RED/YELLOW HANDLE 55X55	B0103.000302*	1" UNI-6125	3.25	(-30°;+55°)	RAL-6003
EPKMZ-3 - BLACK HANDLE	B0103.000301*	1" UNI-6125	3.25	(-30°;+55°)	RAL-6003
EPKMZ-3 - RED/YELLOW HANDLE 55X55	B0103.070830*	1" NPT	3.25	(-30°;+55°)	RAL-6003
EPKMZ-3 - BLACK HANDLE	B0103.070824*	1" NPT	3.25	(-30°;+55°)	RAL-6003
EPKMZ-3 - RED/YELLOW HANDLE 55X55	B0103.070832*	M32X1,5	3.25	(-30°;+55°)	RAL-6003
EPKMZ-3 - BLACK HANDLE	B0103.070833*	M32X1,5	3.25	(-30°;+55°)	RAL-6003
EPKMZ-4 - RED/YELLOW HANDLE 72X72	B0103.000402*	1" UNI-6125	4.60	(-30°;+55°)	RAL-6003
EPKMZ-4 - BLACK HANDLE	B0103.000401*	1" UNI-6125	4.60	(-30°;+55°)	RAL-6003
EPKMZ-4 - RED/YELLOW HANDLE 72X72	B0103.070828*	1" NPT	4.60	(-30°;+55°)	RAL-6003
EPKMZ-4 - BLACK HANDLE	B0103.070827*	1" NPT	4.60	(-30°;+55°)	RAL-6003
EPKMZ-4 - RED/YELLOW HANDLE 72X72	B0103.070829*	M32X1,5	4.60	(-30°;+55°)	RAL-6003
EPKMZ-4 - BLACK HANDLE	B0103.070825*	M32X1,5	4.60	(-30°;+55°)	RAL-6003

* Above codes refer to standard empty boxes. For complete motor protector circuit breakers is necessary to ask to the Sales Office.

FLAMEPROOF

Ex-d Components

Ex-d components are available in a wide range of operators/pilot lights PL series and selectors PSRC series; allow numerous combinations with our CP../CPS.. EFDCN/EFSRC series.

PL.. series includes standard push buttons, emergency push buttons, key selector switches, pilot lights; mechanical operators allow the assembling of a maximum of four contacts.

PSRC.. series includes on-load switches, change over switches, step switches and selector customized upon request on the base of customer specification.

SPARES & ACCESSORIES

IP rating	IP66/IP67
Ambient temperature range	-50°C to +60°C
Approvals	IMQ 09ATEX0019U GOST R
Marking	II 2 GD Ex-d IIC Ex-tD A21 IP66/IP67
Barrel thread	Metric M32x1,5



PL.. Series momentary push buttons

CODE SPARE PART	CODE COMPONENT CERTIFICATE	TYPE	COLOUR	WEIGHT (Kg)
B1302.000100	B1302.000101	PLA-10 PUSH BUTTON	BLACK	0.15
B1302.000200	B1302.000201	PLA-20 PUSH BUTTON	RED	0.15
B1302.000300	B1302.000301	PLA-30 PUSH BUTTON	GREEN	0.15
B1302.000400	B1302.000401	PLA-40 PUSH BUTTON	BLUE	0.15
B1302.000900	B1302.000902	PLA-50 PUSH BUTTON	YELLOW	0.15
B1302.000901	B1302.000903	PLA-60 PUSH BUTTON	WHITE	0.15

Contacts are not included



PL.. Series lockable momentary push buttons

CODE SPARE PART	CODE COMPONENT CERTIFICATE	TYPE	COLOUR	WEIGHT (Kg)
B1309.000100	B1309.000101	PLB-10 PIN-LOCKABLE PUSH BUTTON	BLACK	0.18
B1309.000200	B1309.000201	PLB-20 PIN-LOCKABLE PUSH BUTTON	RED	0.18
B1309.000300	B1309.000301	PLB-30 PIN-LOCKABLE PUSH BUTTON	GREEN	0.18

Contacts are not included

PL.. Series Mushroom push buttons

CODE SPARE PART	CODE COMPONENT CERTIFICATE	TYPE	COLOUR	WEIGHT (Kg)
B1310.000201	B1310.000205	PLC-S NC/NO MUSHROOM PUSH BUTTON TWIST TO RELEASE	RED	0.21
B1310.000202	B1310.000206	PLC-S NO/NO MUSHROOM PUSH BUTTON TWIST TO RELEASE	RED	0.21
B1310.000203	B1310.000207	PLC-S NC/NC MUSHROOM PUSH BUTTON TWIST TO RELEASE	RED	0.21
B1310.000301	B1310.000302	PLC-S-F NC/NO MUSHROOM PUSH BUTTON WITH KEY	RED	0.15
B1310.000303	B1310.000304	PLC-S-F NC/NC MUSHROOM PUSH BUTTON WITH KEY	RED	0.15
B1310.000305	B1310.000306	PLC-S-F NO/NO MUSHROOM PUSH BUTTON WITH KEY	RED	0.15
B1310.000101	B1310.000102	PLC-I MOMENTARY MUSHROOM PUSH BUTTON	RED	0.15

Contacts are not included

PL.. Series Key selector switches

CODE SPARE PART	CODE COMPONENT CERTIFICATE	TYPE	COLOUR	KEY WITHDRAWAL	WEIGHT (Kg)
B1305.001012	B1305.001014	PLF-10 NO/NC KEY SELECTOR SWITCH	-	0	0.20
B1305.001011	B1305.001016	PLF-10 NO/NO KEY SELECTOR SWITCH	-	0	0.20
B1305.001022	B1305.001023	PLF-10 NC/NC KEY SELECTOR SWITCH	-	0	0.20
B1305.001015	B1305.001028	PLF-10 NO/NO KEY SELECTOR SWITCH	-	0-1	0.20
B1305.001024	B1305.001025	PLF-10 NC/NC KEY SELECTOR SWITCH	-	0-1	0.20
B1305.001029	B1305.001020	PLF-10 NO/NC KEY SELECTOR SWITCH	-	0-1	0.20

Contacts are not included

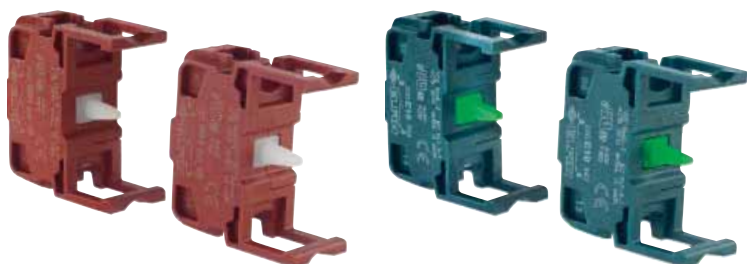
PL.. Series mechanical operators

CODE SPARE PART	CODE COMPONENT CERTIFICATE	TYPE	COLOUR	WEIGHT (Kg)
B1310.000500	B1310.000504	PLC RESTORE PUSH BUTTON - M32X1,5	GREEN	0.10
B1310.000502	B1310.000505	PLC RESTORE PUSH BUTTON - M32X1,5	RED	0.10
B1310.000503	B1310.000506	PLC RESTORE PUSH BUTTON - M32X1,5	BLACK	0.10
B1310.000600	B1310.000603	PLC RESET PUSH BUTTON - M12X1,75	-	0.10

Contacts are not included

PL.. Series Contacts

CODE	TYPE	WEIGHT (Kg)
B1307.000099	NC CONTACT - PL.. SERIES	0.006
B1307.000100	NO CONTACT - PL.. SERIES	0.006



Rated operational characteristic

ITH MAX. 6A	UE (V)	AC-15 Ie max. (A)	DC-13 Ie max. (A)	Ui max. (V)
	24	10	2,5	660
	48	8	1,4	
	60	6	1	
	110	6	0,6	
	220	3	0,3	
	380	2		
	400	1,5		
	500	1,5		
	600	1,2		



PL.. Series Pilot lights

CODE SPARE PART	CODE COMPONENT CERTIFICATE	TYPE	COLOUR
B1303.000100	B1303.000101	PLD-10 PILOT LIGHT	WHITE
B1303.000200	B1303.000201	PLD-20 PILOT LIGHT	RED
B1303.000300	B1303.000301	PLD-30 PILOT LIGHT	GREEN
B1303.000400	B1303.000401	PLD-40 PILOT LIGHT	YELLOW
B1303.000500	B1303.000501	PLD-50 PILOT LIGHT	BLUE

Suitable for LED lamp 3W max. or incandescent lamp 5W max., Vmax.DC 220V, Vmax.AC 380V

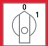


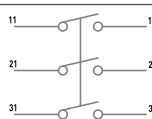
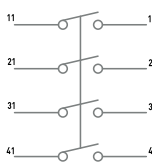


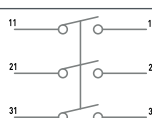
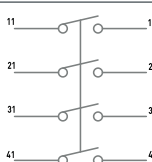
PL.. series Lamps





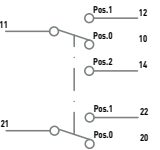
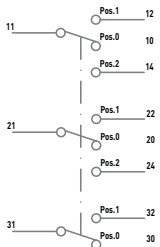
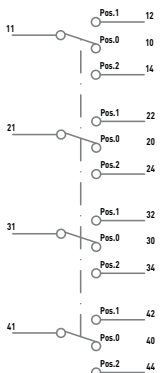
CODE	TYPE	VOLTAGE	COLOUR
B1307.000025	LED LAMP 12V-R	12V	RED
B1307.000026	LED LAMP 12V-V		GREEN
B1307.000027	LED LAMP 12V-G		YELLOW
B1307.000028	LED LAMP 12V-B		WHITE
B1307.000029	LED LAMP 24V-R	24V	RED
B1307.000030	LED LAMP 24V-V		GREEN
B1307.000031	LED LAMP 24V-G		YELLOW
B1307.000032	LED LAMP 24V-B		WHITE
B1307.000291	LED LAMP 24V-BL		BLUE
B1307.000043	LED LAMP 48V-R	48V	RED
B1307.000042	LED LAMP 48V-V		GREEN
B1307.000044	LED LAMP 48V-G		YELLOW
B1307.000041	LED LAMP 48V-B		WHITE
B1307.000033	LED LAMP 110V-R	110V	RED
B1307.000034	LED LAMP 110V-V		GREEN
B1307.000035	LED LAMP 110V-G		YELLOW
B1307.000036	LED LAMP 110V-B		WHITE
B1307.000045	LED LAMP 110V-BL		BLUE
B1307.000037	LED LAMP 220V-R	220V	RED
B1307.000038	LED LAMP 220V-V		GREEN
B1307.000039	LED LAMP 220V-G		YELLOW
B1307.000040	LED LAMP 220V-B		WHITE
B1307.000333	LED LAMP 220V-BL		BLUE



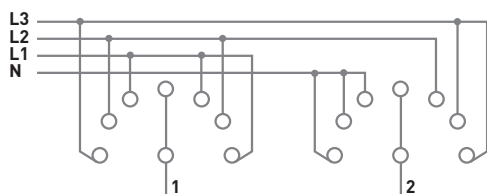
PSRC.. Series On-load switches

CODE SPARE PART	CODE COMPONENT CERTIFICATE	TYPE	N° OF POLES	AMPERE A	WEIGHT (Kg)	DIAGRAM 
B1304.001200	B1304.001202	PSRC-120 - ON LOAD SWITCH	1	20	0.13	
B1304.002200	B1304.002201	PSRC-220 - ON LOAD SWITCH	2	20	0.16	
B1304.003200	B1304.003201	PSRC-320 - ON LOAD SWITCH	3	20	0.20	
B1304.004200	B1304.004201	PSRC-420 - ON LOAD SWITCH	4	20	0.20	
B1304.001320	B1304.001322	PSRC-132 - ON LOAD SWITCH	1	32	0.20	
B1304.002250	B1304.002251	PSRC-232 - ON LOAD SWITCH	2	32	0.20	
B1304.003320	B1304.003321	PSRC-332 - ON LOAD SWITCH	3	32	0.25	
B1304.004320	B1304.004321	PSRC-432 - ON LOAD SWITCH	4	32	0.25	

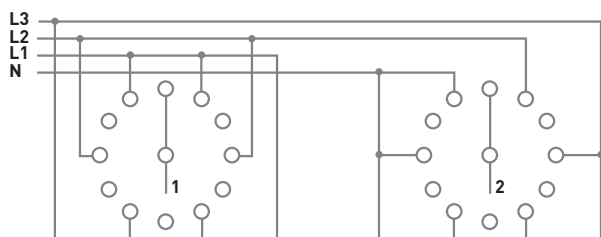
PSRC.. Series Step switch

CODE SPARE PART	CODE COMPONENT CERTIFICATE	TYPE	N° OF POLES	AMPERE A	WEIGHT (Kg)	DIAGRAM 
B1304.021200	B1304.021201	PSRC-C 120 - STEP SWITCH	1	20	0.13	
B1304.022200	B1304.023201	PSRC-C 220 - STEP SWITCH	2	20	0.20	
B1304.023200	B1304.023203	PSRC-C 320 - STEP SWITCH	3	20	0.25	
B1304.023202	B1304.023204	PSRC-C 420 - STEP SWITCH	4	20	0.30	
B1304.023500	B1304.023502	PSRC-C VOLTMETER 7 POS.	-	-		SEE BELOW
B1304.023501	B1304.023503	PSRC-C VOLTMETER 12 POS.	-	-		SEE BELOW
B1304.023510	B1304.023511	PSRC-C AMPERMETER 4 POS.	-	-		SEE BELOW

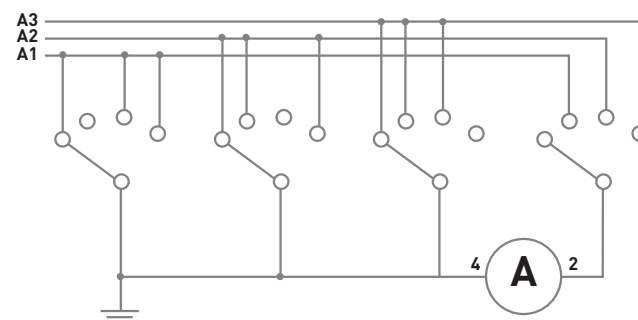
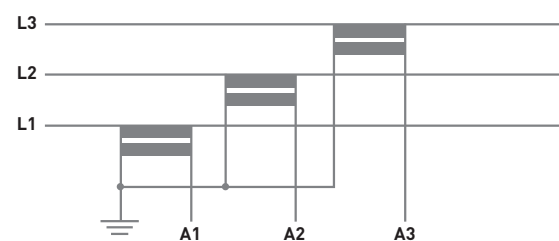
Voltmeter selector switch 7 pos.




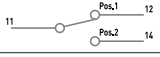
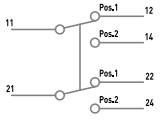
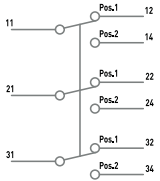
Voltmeter selector switch 12 pos.



Ammeter selector switch 4 pos.



PSRC.. Series Change-over switch

CODE SPARE PART	CODE COMPONENT CERTIFICATE	TYPE	N° OF POLES	AMPERE A	WEIGHT (Kg)	DIAGRAM 
B1304.011200	B1304.011201	PSRC-D 120 - CHANGE OVER SWITCH	1	20	0.13	
B1304.012200	B1304.012201	PSRC-D 220 - CHANGE OVER SWITCH	2	20	0.20	
B1304.013200	B1304.013201	PSRC-D 320 - CHANGE OVER SWITCH	3	20	0.25	

PSRC.. Series SPECIAL rotating switches

CODE SPARE PART	CODE COMPONENT CERTIFICATE	TYPE	N° OF POLES	AMPERE A	WEIGHT (Kg) AVERAGE
B1304.002001	B1304.002101	PSRC-20-R		20	0,3
B1304.002002	B1304.002102	PSRC-20-Y1		20	0,3
B1304.002003	B1304.002103	PSRC-20-Y2		20	0,3
B1304.002004	B1304.002104	PSRC-20-X STD AGIP		20	0,3
B1304.002005	B1304.002105	PSRC-20-R STD AGIP		20	0,3
B1304.002006	B1304.002106	PSRC-220-W2	2	20	0,3
B1304.002007	B1304.002107	PSRC-20-X	1	20	0,3
B1304.001201	B1304.001203	PSRC-120-W1		20	0,3

PSRC Series Rated operational characteristic

AMPERE A	AC-1 Ie MAX. [A]	AC-3 Ie MAX. [A]	AC-11 Ie MAX. [A]	Ui max. [V]
20	25	12	9	690
32	36	22	16	690