

INCREASE SAFETY

AQ../AR.. Series junction boxes - Glass-fiber reinforced polyester



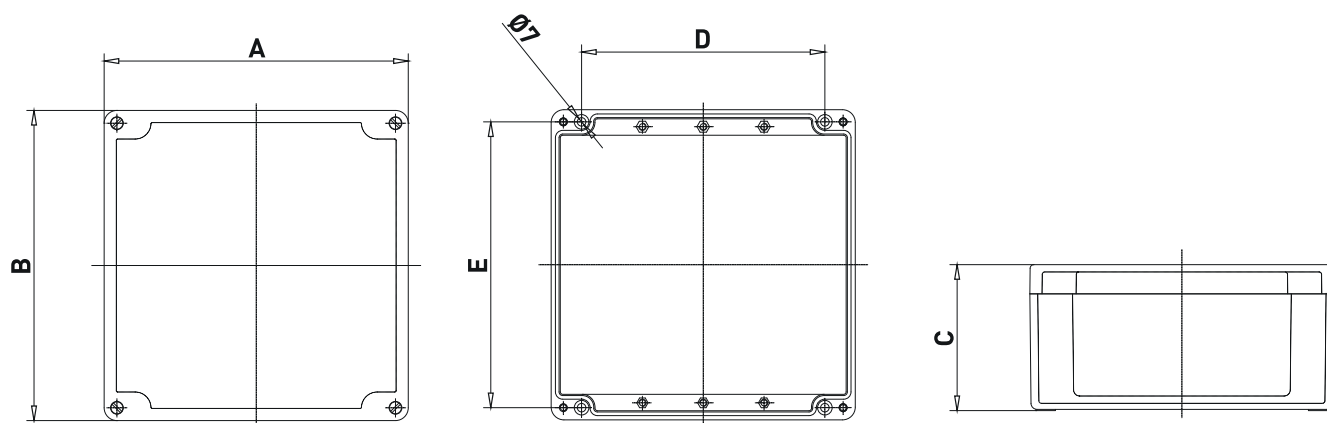
AQ../AR.. Series are used to house Ex-e and Ex-i terminals. Maximum number of terminals changes on the base of terminals section, enclosure operating temperature and required temperature class. They are ideally suited for chemical agents environments. Sea water corrosion resistance and extremes of low and high temperatures. EFE prefix is used for Ex-de push button station execution and enclosure can be equipped with:

- Standard and emergency push buttons;
- Selector switches;
- Pilot lights;
- Measurement instruments;
- Electric and electronic equipment Ex-de certified.

TECHNICAL FEATURES

Material	GRP (Glass-fiber reinforced polyester)
IP rating	IP66/IP67
Ambient temperature range	-50°C to +60°C
Approvals	IMQ 08 ATEX 028X GOST R
Marking	II 2 GD Ex-e IIC Gb / Ex-ia Ga IIC T(**) Ex-tb IIIC T(**) Db IP66/67 ** T6/T85°C, T5/T100°C, T4/T135°C
Standard certificate label	Made by self adhesive UV and corrosion resistant polyester, approved by INERIS Laboratory.
Accessories available upon request	Hinges Drain/breather valve Traffolyte/Stainless steel certificate label Internal mounting plate Earth continuity plates Passing through earth bolt

Dimensions AQ../AR..



AQ../AR.. Series junction boxes

TYPE	DIMENSIONS					WEIGHT [kg]
	A	B	C	D	E	
AQ-080806P	75	80	55	45	48	0,23
AR-081106P	75	110	55	45	98	0,295
AQ-121209P	120	122	90	82	106	0.75
AR-122209P	120	220	90	82	204	1,06
AQ-161609P	160	160	90	110	140	1,29
AR-162609P	160	260	90	110	240	1.71
AR-163609P	160	360	90	110	340	2.15
AQ-252612P	250	255	120	200	235	2.65
AR-254012P	250	400	120	200	380	3,65
AR-256012P	250	600	120	200	580	5,235
AQ-414012P	405	400	120	355	380	5.58

For complete junction boxes is necessary to ask to the Sales Office.
Other sizes available.

Maximum number of entries on sides

TYPE	M20 / 1/2"		M25 / 3/4"		M32 / 1"		M40 / 1" 1/4		M50 / 1" 1/2		M63 / 2"	
	A	B	A	B	A	B	A	B	A	B	A	B
AQ-080806P	1	1	-	1	-	-	-	-	-	-	-	-
AR-081106P	1	2	-	2	-	-	-	-	-	-	-	-
AQ-121209P	2	2	1	2	1	1	1	1	-	-	-	-
AR-122209P	2	5	1	4	1	3	1	3	-	-	-	-
AQ-161609P	3	3	2	3	1	2	1	1	-	-	-	-
AR-162609P	3	5	2	5	1	4	1	3	-	3	-	-
AR-163609P	3	8	2	7	1	6	1	5	-	4	-	-
AQ-252612P	8	10	8	10	3	7	3	4	2	3	2	2
AR-254012P	8	18	8	16	3	5	3	5	3	5	2	4
AR-256012P	8	25	8	24	3	10	3	8	2	6	2	6
AQ-414012P	16	18	6	14	5	6	5	5	4	5	3	6

INCREASE SAFETY

AQ../AR.. Series junction boxes – Aluminium low thickness



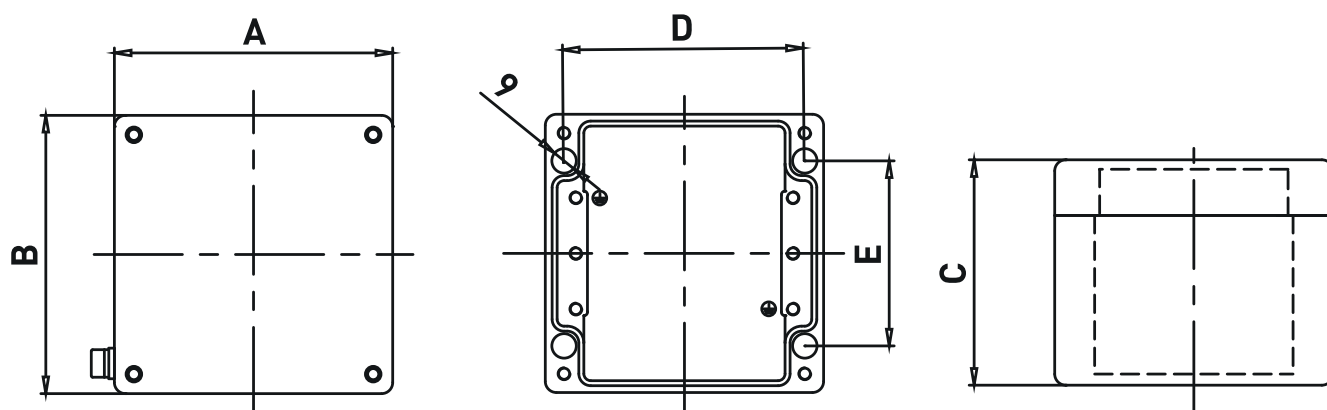
AQ../AR.. Series are used to house Ex-e and Ex-i terminals. Maximum number of terminals changes on the base of terminals section, enclosure operating temperature and required temperature class. They are ideally suited for chemical agents environments. Sea water corrosion resistance and extremes of low and high temperatures. EFXE prefix is used for Ex-de push button station execution and enclosure can be equipped with:

- Standard and emergency push buttons;
- Selector switches;
- Pilot lights;
- Measurement instruments;
- Electric and electronic equipment Ex-de certified.

TECHNICAL FEATURES

Material	Aluminium with low content of copper
IP rating	IP66/IP67
Ambient temperature range	-50°C to +60°C
Approvals	IMQ 08 ATEX 028X GOST R
Marking	II 2 GD Ex-e IIC Gb / Ex-ia Ga IIC T(**) Ex-tb IIIC T(**) Db IP66/67 ** T6/T85°C, T5/T100°C, T4/T135°C
Standard certificate label	Made by self adhesive UV and corrosion resistant polyester, approved by INERIS Laboratory.
Surface treatment	Standard with polyester powder coating RAL 7001
Accessories available upon request	Hinges Drain/breather valve Traffolyte/Stainless steel certificate label Internal mounting plate Earth continuity plates Passing through earth bolt

Dimensions AQ../AR..



AQ../AR.. Series junction boxes

TYPE	DIMENSIONS					WEIGHT [kg]
	A	B	C	E	F	
AQ-080806AL	80	75	57	52	63	0,28
AR-081806AL	80	175	57	52	163	0,53
AR-082505AL	80	250	52	52	238	0,71
AQ-101008AL	100	100	80	66	86	0,6
AR-101608AL	100	160	80	66	146	0,8
AR-102008AL	100	200	80	66	186	0,95
AQ-121208AL	120	122	80	82	106	0,94
AQ-121209AL	120	122	90	82	106	0,92
AR-122208AL	120	220	80	82	204	1,39
AR-122209AL	120	220	90	82	204	1,41
AR-123608AL	120	360	80	82	344	1,95
AQ-141409AL	140	140	90	93	120	1,5
AR-142009AL	140	200	90	93	180	1,63
AQ-161609AL	160	160	90	110	140	1,48
AR-162609AL	160	260	90	110	240	2,01
AR-163609AL	160	360	90	110	340	2,52
AR-165609AL	160	560	90	110	540	3,74
AQ-181810AL	180	180	100	130	160	2,25
AR-182810AL	180	280	100	130	260	2,9
AR-231011AL	230	100	110	180	80	1,78
AR-232011AL	230	200	110	180	180	2,42
AR-232018AL	230	200	180	180	180	3,96
AR-232811AL	230	280	110	180	260	2,97
AR-233311AL	230	330	110	180	310	3,37
AR-233318AL	230	330	180	180	310	5,24
AR-234011AL	230	400	110	180	380	3,82
AR-234023AL	230	400	230	180	380	6,82
AR-236011AL	230	600	110	180	580	6,93
AR-314011AL	310	400	110	262	382,5	5,28
AR-314014AL	310	400	140	262	382,5	6,7
AR-314018AL	310	400	180	262	382,5	8,46
AR-314023AL	310	400	230	262	382,5	8,66
AR-316011AL	310	600	110	260	580	8,64
AR-316018AL	310	600	180	260	580	11,08
AQ-606020AL	600	600	200	525	555	25,94

For complete junction boxes is necessary to ask to the Sales Office.

INCREASE SAFETY

AQ../AR.. Series junction boxes – Aluminium high thickness



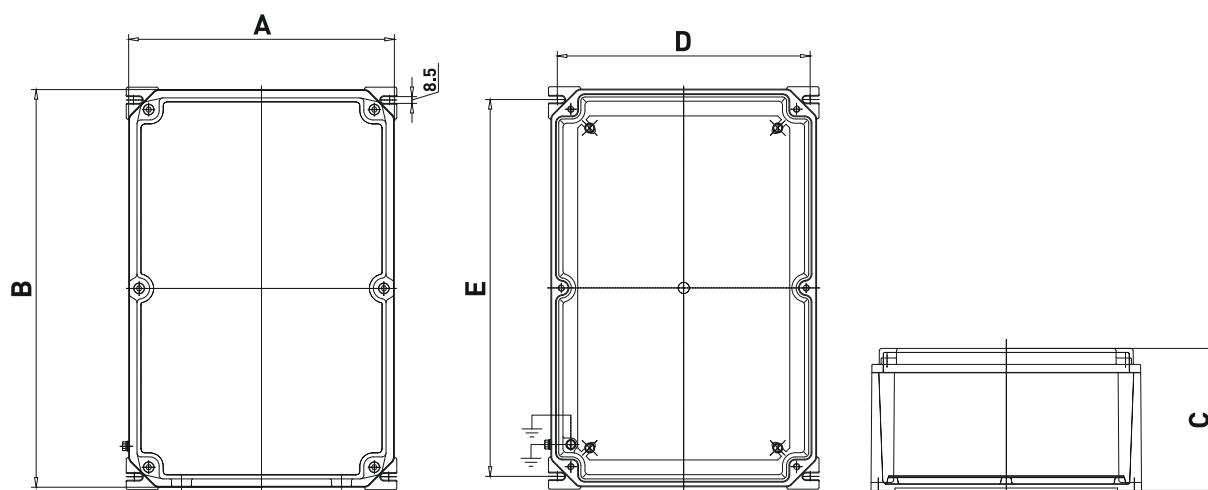
AQ../AR.. Series are used to house Ex-e and Ex-i terminals. Maximum number of terminals changes on the base of terminals section, enclosure operating temperature and required temperature class. They are ideally suited for chemical agents environments. Sea water corrosion resistance and extremes of low and high temperatures. EFXE prefix is used for Ex-de push button station execution and enclosure can be equipped with:

- Standard and emergency push buttons;
- Selector switches;
- Pilot lights;
- Measurement instruments;
- Electric and electronic equipment Ex-de certified.

TECHNICAL FEATURES

Material	Aluminium with low content of copper
IP rating	IP66/IP67
Ambient temperature range	-50°C to +60°C
Approvals	IMQ 08 ATEX 028X GOST R
Marking	II 2 GD Ex-e IIC Gb / Ex-ia Ga IIC T(**) Ex-tb IIIC T(**) Db IP66/67 ** T6/T85°C, T5/T100°C, T4/T135°C
Standard certificate label	Made by self adhesive UV and corrosion resistant polyester, approved by INERIS Laboratory.
Surface treatment	Green colour polyurethane painting cycle RAL6003 (other colour available upon request)
Entries	Metric pitch 1.5, ANSI B1.20.1 NPT, UNI-6125
Hardware and screws	AISI304 Stainless steel external hardware and screws
Accessories available upon request	Hinges Drain/breather valve Traffolyte/Stainless steel certificate label Internal mounting plate Passing through earth bolt

Dimensions AQ../AR..



AQ../AR.. Series junction boxes

TYPE	DIMENSIONS					WEIGHT [kg]
	A	B	C	D	E	
AR-8A AL S	330	660	177	305	635	16,7
AR-8A AL L	580	840	205	560	810	36
AR-8A AL (HTH)	495	495	171	470	470	17,3
AR-8 AL (HTH)	330	495	171	320	470	12,4
AQ-8 AL (HTH)	332	332	178	310	315	8

For complete junction boxes is necessary to ask to the Sales Office.

Maximum number of entries on sides

TYPE	M20 / 1/2"		M25 / 3/4"		M32 / 1"		M40 / 1" 1/4"		M50 / 1" 1/2"		M63 / 2"	
	A	B	A	B	A	B	A	B	A	B	A	B
AR-8A AL S	34	50	20	28	17	25	7	10	6	8	4	7
AR-8A AL L	48	76	30	48	24	39	14	22	12	20	5	8
AR-8A AL (HTH)	36	36	20	20	18	18	7	7	6	6	5	5
AR-8 AL (HTH)	24	36	14	20	12	18	5	7	4	6	3	5
AQ-8A AL (HTH)	31	31	18	18	16	16	7	7	5	5	4	4

INCREASE SAFETY

AQ../AR.. Series junction boxes - AISI316 L Stainless steel



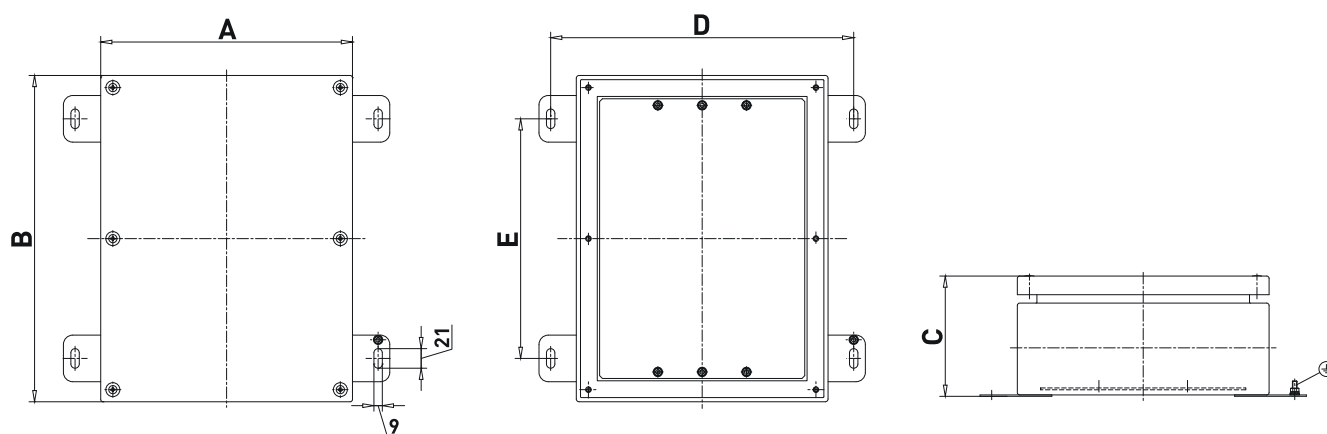
AQ../AR.. Series are used to house Ex-e and Ex-i terminals. Maximum number of terminals changes on the base of terminals section, enclosure operating temperature and required temperature class. They are ideally suited for chemical agents environments. Sea water corrosion resistance and extremes of low and high temperatures. EFXE prefix is used for Ex-de push button station execution and enclosure can be equipped with:

- Standard and emergency push buttons;
- Selector switches;
- Pilot lights;
- Measurement instruments;
- Electric and electronic equipment Ex-de certified.

TECHNICAL FEATURES

Material	AISI316 L Stainless steel
IP rating	IP66/IP67
Ambient temperature range	-50°C to +60°C
Approvals	IMQ 08 ATEX 028X GOST R
Marking	II 2 GD Ex-e IIC Gb / Ex-ia Ga IIC T(**) Ex-tb IIIC T(**) Db IP66/67 ** T6/T85°C, T5/T100°C, T4/T135°C
Standard certificate label	Made by self adhesive UV and corrosion resistant polyester, approved by INERIS Laboratory.
Surface treatment	Acid treatment
Accessories available upon request	Electropolish treatment Side gland plates Hinges Drain/breather valve Traffolyte/Stainless steel certificate label Internal mounting plate Locking facility Passing through earth bolt

Dimensions AQ../AR..



AQ../AR.. Series junction boxes

TYPE	DIMENSIONS					WEIGHT [kg]
	A	B	C	D	E	
AQ-6	270	270	130	325	177	4,5
AQ-8	350	350	160	405	257	5,6
AR-2	137	200	130	192	-	4
AR-4	200	270	130	255	177	7
AR-6	270	350	130	325	257	9,5
AR-8	350	500	160	405	407	13
AR-8A	500	500	160	555	407	14,5

For complete junction boxes is necessary to ask to the Sales Office.

Maximum number of entries on sides

TYPE	AQ-6		AQ-8		AR-2		AR-4		AR-6		AR-8		AR-8A	
	A	B	A	B	A	B	A	B	A	B	A	B	A	B
M20 / 1/2"	12	12	24	24	6	10	10	12	12	16	24	36	36	36
M25 / 3/4"	10	10	14	14	4	8	8	10	10	14	14	20	20	20
M32 / 1"	4	4	12	12	2	3	3	4	4	6	12	18	18	18
M40 / 1" 1/4	4	4	5	5	2	3	3	4	4	5	5	7	7	7
M50 / 1" 1/2	3	3	4	4	1	2	2	3	3	4	4	6	6	6
M63 / 2"	3	3	3	3	1	2	2	3	3	3	3	5	5	5
M75 / 2" 1/2	-	-	3	3	-	-	-	-	-	-	3	4	4	2
M80 / 3"	-	-	2	2	-	-	-	-	-	-	4	4	4	4

AQ../AR.. Series junction boxes with gland plates

TYPE	DIMENSIONS					WEIGHT [kg]
	A	B	C	D	E	
AQ-6/FR4	286	286	130	325	177	5
AQ-8/FR4	366	366	160	405	257	6,5
AR-4/FR4	286	216	130	255	177	7,3
AR-6/FR4	366	286	130	325	257	10
AR-8/FR4	516	366	160	405	407	13,7
AR-8A/FR4	516	516	160	555	407	15,2

For complete junction boxes is necessary to ask to the Sales Office.

Maximum number of entries on sides

TYPE	AQ-6/FR4		AQ-8/FR4		AR-4/FR4		AR-6/FR4		AR-8/FR4		AR-8A/FR4	
	A	B	A	B	A	B	A	B	A	B	A	B
M20 / 1/2"	5	5	14	14	4	5	5	7	14	22	22	22
M25 / 3/4"	5	5	6	6	3	5	5	6	6	10	10	10
M32 / 1"	4	4	5	5	2	4	4	5	5	8	8	8
M40 / 1" 1/4	3	3	4	4	2	3	3	4	4	7	7	7
M50 / 1" 1/2	-	-	4	4	-	-	-	-	4	6	6	6
M63 / 2"	-	-	3	3	-	-	-	-	3	5	5	5

INCREASE SAFETY

AQR.. Series junction boxes - AISI316 L Stainless steel



AQ../AR.. Series are used to house Ex-e and Ex-i terminals.

Maximum number of terminals changes on the base of terminals section, enclosure operating temperature and required temperature class.

Dimensions can be customized up to 1000mm x 2000mm x (depth upon request).

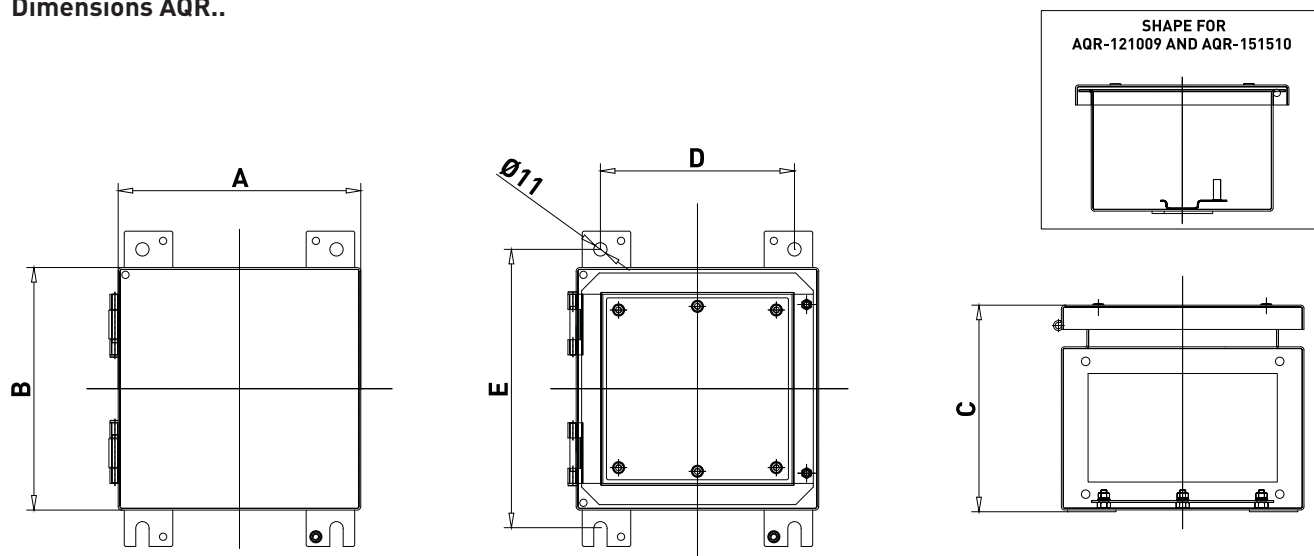
Below codes are our standard production available in our stock.

They are ideally suited for chemical agents environments. Sea water corrosion resistance and extremes of low and high temperatures.

TECHNICAL FEATURES

Material	AISI316 L Stainless steel
IP rating	IP66/IP68
Ambient temperature range	-50°C to +60°C
Approvals	DNV 10 ATEX 83561 GOST R IECEX DNV 10.0008
Marking	II 2 GD Ex-e II T(**) Ex tD A21 IP66/68 T(***) ** T5, T4 *** T85°C, T110°C T6/T85°C only Ex-ia protection
Standard certificate label	Made by self adhesive UV and corrosion resistant polyester, approved by INERIS Laboratory.
Surface treatment	Acid treatment
Accessories available upon request	Electropolish treatment Side gland plates Hinges Drain/breather valve Traffolyte/Stainless steel certificate label Internal mounting plate Locking facility Passing through earth bolt

Dimensions AQR..



AQR Series junction boxes

TYPE	DIMENSIONS					WEIGHT [kg]
	A	B	C	D	E	
AQR-121009 ^{(1) (2)}	120	100	100	150	-	1,5
AQR-151510 ^{(1) (3)}	150	150	106	180	-	2,5
AQR-202010	200	200	125	160	230	3
AQR-202015	200	200	170	160	230	3,5
AQR-282815	280	280	170	240	310	5,2
AQR-302015	300	200	170	260	230	5
AQR-383815	380	380	170	340	410	8,1
AQR-384515	380	450	170	340	480	8,9
AQR-385715	380	570	170	340	600	10,7
AQR-575715	570	570	170	530	600	16,4
AQR-575730	570	570	320	530	600	21,4
AQR-577620	570	760	220	530	790	21,7
AQR-769520	760	950	220	720	980	32,9

For complete junction boxes is necessary to ask to the Sales Office.

(1) Without hinges. Welded internal rail

(2) AQR 121009 cover external dimension 160x120mm

(3) AQR 151510 cover external dimension 187x176 mm

Maximum number of entries on sides

TYPE	AQR-121009		AQR-151510		AQR-202010		AQR-202015		AQR-282815		AQR-302015		AQR-383815	
	A	B	A	B	A	B	A	B	A	B	A	B	A	B
M20 / 1/2"	6	4	6	6	10	10	12	12	18	18	21	12	24	24
M25 / 3/4"	4	2	4	4	7	7	8	8	12	12	14	8	16	16
M32 / 1"	3	2	3	3	4	4	6	6	9	9	10	6	12	12
M40 / 1" 1/4	2	1	2	2	2	2	5	5	8	8	9	5	10	10
M50 / 1" 1/2	2	1	2	2	2	2	4	4	7	7	8	4	9	9
M63 / 2"	1	1	1	1	2	2	3	3	4	4	5	3	6	6
M75 / 2" 1/2	-	-	-	-	-	-	2	2	4	4	4	2	5	5
M80 / 3"	-	-	-	-	-	-	2	2	3	3	3	2	4	4

Maximum number of entries on sides

TYPE	AQR-384515		AQR-385715		AQR-575715		AQR-575730		AQR-577620		AQR-769520	
	A	B	A	B	A	B	A	B	A	B	A	B
M20 / 1/2"	30	24	39	24	39	39	88	88	68	52	88	68
M25 / 3/4"	20	16	26	16	26	26	58	58	45	34	58	45
M32 / 1"	15	12	19	12	19	19	44	44	34	26	44	34
M40 / 1" 1/4	13	10	17	10	17	17	39	39	30	23	39	30
M50 / 1" 1/2	12	9	15	9	15	15	35	35	27	20	35	27
M63 / 2"	7	6	9	6	9	9	22	22	17	13	22	17
M75 / 2" 1/2	6	5	8	5	8	8	19	19	15	11	19	15
M80 / 3"	5	4	6	4	6	6	14	14	11	8	14	11