

# TNAML<sup>®</sup> zone 2/22



## Maintenance Free Fluorescent Luminaire



### Features:

- + 100% encapsulated, maintenance free design requiring only visual inspection to IEC/EN 60079-17
- + 10 years operational warranty \* assures favourable total cost of ownership
- + Easy and flexible installation
- + Fit & Forget
- + Seawater resistant anodized aluminium (in accordance with ATEX regulations)
- + Tempered self-cleaning glass, very high impact resistant, IK 10 (20 joules)
- + Fully recyclable, environmental friendly product
- + Operational battery powerd, 90/180 minutes functionality, battery functionality -20°C to + 30°C
- + High light output efficiency (>80%) i.e. less luminaires required for same lighting level
- + Available with 2x18W / 2x36W / 2x58W lamps
- + Self-locking device for cable gland nuts
- + No condensation due to 100% sealed for life construction
- + Safety wire connection
- + 100% leakage test
- + Clean room recessed mounting system
- + HACCP approved for food applications
- + Black start for platforms
- + Emergency lighting by LED

\*Conditions apply

## Characteristics:

+ Maintenance free (visual inspection only)

+ Sealed-for-life concept

+ Fit and forget

+ 10 years operational warranty\*

+ 84.000 hours functionality\*

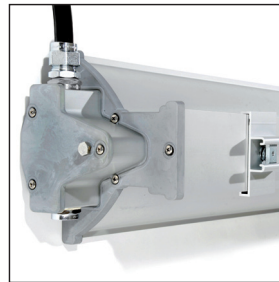
+ Patented design

+ Vibration test by Thales (detailed report available on request)

- Standard:	IEC60721-2-3 Ed 1.0 and IEC68-2-6
- Frequency range:	1 - 150 Hz
- Amplitude:	5mm (1 to 10 Hz)
- Acceleration:	2 gn (10 to 150 Hz)
- Sweep rate:	1 octave per minute
- sweep cycles:	10
- directions:	3

+ Vibration test by Sebert Trillingstechniek BV (detailed report available on request)

- Standard:	IEC60068-3-3 for Nuclear Generating Stations
-------------	--

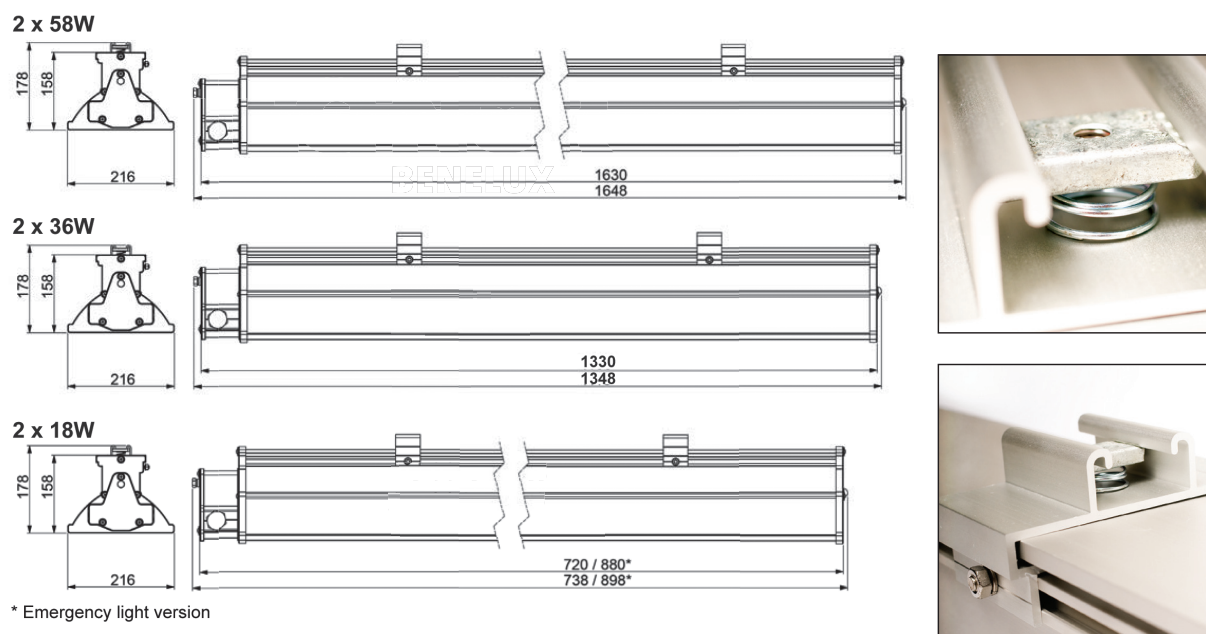


## General specifications:

Certificate:	ATEX: DEKRA 12ATEX0031
Modes of protection:	Ex nA, Ex tD A22
ATEX classification:	Group II Category 3 G D
Zones:	2 and 22
Applied standards:	EN-IEC 60079-0, EN-IEC 60079-15, EN-IEC 60079-31, EN-IEC 62262 EN-IEC 60598-2, EN-IEC 60598-2-1, EN-IEC 60598-2-22, EN 55015 EN 61000-3-2, EN 61000-3-3
Ex code:	Gas II 3 G Ex nA nC IIC T6 Gc Dust II 3 D Ex tD A22 IP68 T80°C
Inspection:	Visual inspection in accordance with EN/IEC 60079-17
HACCP:	Stated by DEKRA 06540-QUA/EX
Ingress protection:	IP 68 by attest DEKRA 211978700

## Product specifications:

Housing:	Seawater resistant (NORSOK 121) anodized (25 micron) aluminium with tempered glass
Lamps:	Pre-mounted long life lamps, colour 4000K
Impact rating:	IK 10 (20 joules) to IEC 62262
Operational temperature range:	-20°C to +55°C for standard version, -20°C to +30°C for emergency version
Voltage:	220-264VAC 50/60Hz
Electrical connection:	0,5-6mm <sup>2</sup> by spring terminals through integrated external junction box (sealed by resin after installation and test)
Entries:	2 x M25 cable gland entries. 1 plugged off
Ballast:	Electronic with end of life protection, Pre-heated start
Mounting:	2 x brackets on guidance rail for flexible, easy and quick installation
Emergency batteries:	Disconnecting possibility during installation by "B" terminal
Battery life time:	300 cycles, automatic random test each 100 days



### Type key generator:

**TNAML-nA 1236A1A**

1= 230V 50/60Hz  
2= 110V 50/60Hz

218= 2x18 Watt lamps  
236= 2x36 Watt lamps  
258= 2x58 Watt lamps

A= Standard body, see dimensional drawings  
B= HACCP for food industry  
C= Wireless Black Start

1= 1 terminal box  
2= 2 terminal boxes incl. through wiring  
2,5 sqmm

A= Normal light  
B= Emergency light 90 minutes capacity, 2 LEDs  
C= Emergency light 180 minutes capacity, 2 LEDs  
D= Emergency light 90 minutes 4 LEDs for IMO applications  
E= Recessed from bottom  
(only for 2x18 Watt and 2x36 Watt 1 meter)  
F= Recessed from top

### Most common types:

Article code	Wattage	Voltage	Weight	Lumen
TNAML-nA 1218A1A	2 x 18W	220-264VAC	7.1 kgs	2,600
TNAML-nA 1236A1A	2 x 36W	220-264VAC	9.7 kgs	6,000
TNAML-nA 1258A1A	2 x 58W	220-264VAC	12.4 kgs	10,400
TNAML-nA 1218A1B	2 x 18W	220-264VAC	7.1 kgs	2,600
TNAML-nA 1236A1B	2 x 36W	220-264VAC	9.7 kgs	6,000
TNAML-nA 1258A1B	2 x 58W	220-264VAC	12.4 kgs	10,400

Type	Max. qty. of luminaires on a 16A/C-char. circuit. 30mA ELCB	Inrush current
2 x 18W	30	18A / 250µs
2 x 36W	30	18A / 250µs
2 x 58W	20	31A / 350µs

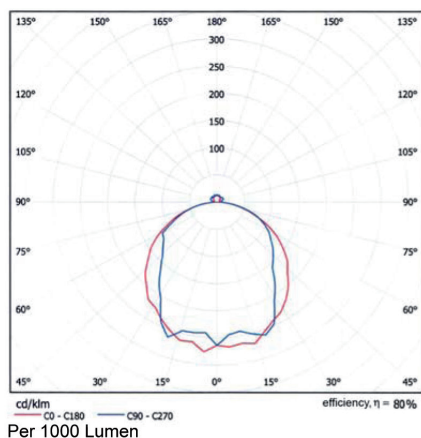
## Total Cost of Owner ship

The benefits of installing TNAML® can be shown in a Total Cost of Ownership calculation. For this purpose we have created a software tool to calculate the lifetime cost savings based on input from the client.

## Upon request:

Voltage:	110/120VAC, 50/60 Hz (only for 2x18W and 2x36W)
Lamps:	Colour 3000K or 6500K
Electrical connection:	By 6 meter permanent flying lead, braided
Mounting brackets:	Pole and ceiling mounting brackets
Frosted glass	Avoiding glare for low mounted luminaires
HACCP	For food industry
Safety wire:	For installation into a fixing arrangement on the light fitting
Cable Gland Ex e:	Suitable rated cable glands can be supplied with the luminaire (separate package)
Recessed ceiling installation:	Frame for recessed installation in modular ceiling systems, painted steel or stainless steel
Wiring:	Through wiring by 2 junction boxes
Other area classifications:	Zone 1, Ex e mb II T6 (TNAML...) or safe area industrial version (TNAML-I...)
Mounting brackets:	Pole and ceiling mounting brackets

## Standard luminaire



## Emergency luminaire

